

WEATHER

	Min.	Max.	Precip.
Wednesday, Sept. 10	44	45	0.00
Thursday, Sept. 11	44	74	0.00
Friday, Sept. 12	56	72	0.96
Saturday, Sept. 13	49	65	Trace
Sunday, Sept. 14	40	61	0.00
Monday, Sept. 15	37	64	0.00
Tuesday, Sept. 16	44	69	0.01

ONE HUNDRED-SIXTH YEAR—No. 14

14 Pages This Week

Plus 4-Page Supplement

CHELSEA, MICHIGAN, THURSDAY, SEPTEMBER 18, 1975

15c per copy

SUBSCRIPTION: \$6.00 PER YEAR

The Chelsea Standard

QUOTE

"He that hears much and speaks not at all shall be welcome both in bower and hall."
—John Ray.

Bulldog Gridders Dump Tecumseh In Season Opener

One of the largest opening game crowds greeted the Chelsea Bulldogs Friday evening on the home field to watch the team defeat Tecumseh for the third consecutive year, 28-13.

With just a nip of fall in the air, the Bulldogs met their match as the Indians held them for three downs in the first quarter, forcing a punt. After a penalty, Chelsea drove 81 yards in 11 plays with Tony Robards going the last two yards for a touchdown. 24 yards in the drive was gained by Tim Reed who caught a 21-yard pass from Randy Guenther. Co-captain Howard Salyer gained 18 yards in the drive. The extra point attempt was blocked, leaving a 6-0 lead in favor of Chelsea.

Tecumseh, infamous for their strength, fought back as Chelsea suffered a let-down, going 70 yards in five plays with the Indian quarterback racing the last 20 yards for the touchdown. The Indians gained the extra point to lead by one.

However, Chelsea offense came roaring back, gaining 74 yards in nine plays. Again a pass from Guenther to Reed covering 28 yards was a big play in the drive. Tony Robards scored the touchdown, going the final 12 yards. The kick for extra point was not good.

In the second quarter of play both teams were scoreless. A fumble stopped the Bulldogs from a drive that may have led to another TD for the team.

Coach Phil Bareis said, "The offensive line seniors led by Co-captain Dennis Bauer, Don Sullivan, Rex Miles, Jim Boyer, Jim Marshall, Dave Schaible and Dave Watson must be given a lot of credit for Chelsea rushing yardage as they came off the ball real quick." Chelsea amassed 379 yards in rushing, with Tony Robards leading in the department with 112 yards in 24 carries. Reed gained 97 yards, followed by Salyer who gained 88 and Guenther 63.

The third quarter of play found the Bulldog offense continuing with their driving techniques. They drove 73 yards with Howard Salyer going 24 for the touchdown. Bareis reported, "In this drive Chelsea used ball control for 10 plays; the longest gain was three yards and the shortest was three yards until the Salyer run for the TD."

In the fourth and final quarter of play sophomore defensive tackle Leon Brown recovered a Tecumseh fumble on the Chelsea 30-yard line. After two plays the quarterback, Randy Guenther, bootlegged left and went the last 24 yards for Chelsea's fourth touchdown. Howard Salyer ran in for a two-point conversion, ending Chelsea scoring for the night.

Tecumseh scored again in the fourth quarter.

Leading tackles for the Chelsea defense were Dennis Bauer with 11, Tim Reed 8, Rex Miles 5, Joel Sprague, Bruce Stubbs and Jim Boyer, 4 each.

In discussing the good and bad points of the game, Coach Bareis said, "although the defense gave up two touchdowns, they played well in spots. We still need to improve. Middle guard Jerry Miliken had a fine defensive game as did John Collins who had one pass interception. Over-all we showed good hustle and skill; one game doesn't make the season, but on the other hand, it was a good opening game."



HOLLY PORTER

Rec. Council Names Porter New Director

Acting director for the Chelsea Recreation Council, Ann Schaffner, announced today that Holly Porter has accepted the part-time directorship position. Mrs. Porter was a staff member of the summer Earn, Learn and Play program under the direction of Tom Balistrere and was active in the recreation program while in high school under the direction of Ken Larson.

Mrs. Porter, an elementary education teacher who will substitute in the Chelsea school system this year, said that the fall adult recreation program is complete and that she is winding up final plans for a Saturday children's program.

Mrs. Porter plans to continue with cartoon shows and informal game activities for children. In addition, she has enlisted the talent of the Eastern Michigan University Children's Theatre who have agreed to put on two children's productions in Chelsea.

Plans for the winter and spring programs have not been finalized. Mrs. Porter said that winter-spring recreation will consist of activities run by the Council in past years with some new additions.

Golfers Win Over Novi, St. Thomas

Chelsea's varsity golfers won both of their matches last week in a quick that marked up identical 163-182 scores for both matches.

The team met St. Thomas Sept. 10 on the Huron Municipal golf course in Ann Arbor. Mike Fouty was medalist for the game, shooting a low 35 for the nine hole round. Jeff Policht shot a 41; Brian Lewis a 43 and Dan Shirilla a 44.

In a match played Thursday afternoon on the Inverness course with Novi golfers; Mike Fouty once again shot the low score, titling himself medalist for the day at 39. He was followed by Brian Lewis (Continued on page six)

Automotive Supply Buys Hilltop Site

The Hilltop building located on M-52, formerly owned by Robert Shears, has been purchased by a Detroit man who will use the building for an automotive retail parts and supply outlet.

According to the new owner, Dwight Heeper, the Hilltop building will be remodeled to accommodate both foreign and domestic automotive stock and will be known as Chelsea Automotive.

Hilltop will operate at 8316 Werkner Rd. Sandy Meyer, bookkeeper for her father's business said that the firm will continue to do custom work, stock some retail and continue with service. However, Mrs. Meyer stressed that they will not stock cabinets, kitchens and vanity stops. "Everything will be strictly custom quality work. We will not have a showroom," she said.

Heeper who has purchased a home on McKinley for his wife and three children, will be joined in the business by his son, Derrick, who also plans to move to Chelsea with his family.

In a telephone interview, Heeper said that he saw a lot of growth in the area and a real need for second automotive parts and supply store. Formal transactions will be complete Oct. 1. If all goes well Heeper hopes to open Chelsea Automotive Oct. 15.

The sale was conducted by Frisinger Realty.

Cross Country Team Splits Two Meets

Chelsea's varsity cross country team met Tecumseh last Thursday, defeating their opponents, 23-34. Leading Bulldog runner was Phil Frame who placed second for the three-mile run with a time of 17:13.

Other Chelsea placers and their times are as follows: 4th, Morris Johnson, 17:19; 5th, Rick Haller, 17:20; 6th, John Storey, 17:26; 7th, Dean Thompson, 17:34 and 9th, Bill Rademacher, 17:45.

On Tuesday, the Bulldogs met defeat at the hands of Lumen Christi of Jackson on the home course. The Lumen Christi team took the meet by a milestone score of 17-42. However, a number of Chelsea runners ran their all-time bests, while others ran their best times for the home course.

Top Chelsea runners were Phil Frame in 5th place with a best home time of 17:06; 6th place, Rick Haller who ran another home best of 17:11; 9th place Dean Thompson whose 17:29 was also his best time for the home course. John Storey placed 10th running 17:32, Bill Rademacher, 12th at 17:44, another best, and Morris Johnson, 14th at 18:14.

Cross country coach Pat Clarke remarked that two of his freshman runners, Scott Beyer and Chris Minnick "ran their best times by far." The pair ran 18:13 and 18:43, respectively.

The team will meet their first league opponents Thursday when they run against Novi on the Inverness course at 4:30 p.m. Clarke said that these non-league teams have been two of the rougher teams they will meet all year. With a season score of 1-2, Clarke remarked, "We're just getting them tough for the league."

Fair Beef Winners

Steer quarter winners at the 1975 Chelsea Community Fair are Garry Klink of Chelsea, Ruth Schauer of Pinckney, Ann Steinaway of Chelsea and James Fletcher of Stockbridge.



CAMPAIGN SOLICITOR CHAIRMEN: Looking over materials to be used in soliciting funds for Chelsea's 1975 United Way Campaign, standing front from left, are Elsie Heller, rural S.E.; Carol Dmoch, residential; Dorothy Shippey, rural N.W., and Irene Brand, rural S.W. In the back row, Helen

Lancaster, commercial; Jerry Heller, industrial; Joe Rossi, school. Not present, Netta Mills, organizational chairman; Carol Flintoft, professional chairman; and Anne Steinaway, rural N.E. Chelsea's United Way Campaign will kick off Monday, Sept. 29 and run through Friday, Oct. 10.



OUTSTANDING SERVICE TO THE UNITED WAY: Earl Klemer presents a plaque to outstanding members of the United Way who have given their time as board members and on various United Way committees. Pictured receiving the plaque

from left, are Marketa Satterthwaite, Norma Jean Smith and James Liebeck. Not present for the photo were Roy Greenleaf, Robert Kozma, Tony Bowen and Paul Frisinger.

Award Given UW Board Members

Outstanding service awards were presented Wednesday evening, Sept. 17 in Village Council chambers to seven United Way board members. Presenting the awards was Earl Klemer, president of Chelsea United Way. Receiving plaques were James Liebeck, Robert Kozma, Norma Jean Smith, Marketa Satterthwaite, Roy Greenleaf, Tony Bowen, and Paul Frisinger.

Liebeck, a past president, served on the board for six years. He has also served on the Michigan United Way Board of Directors. Norma Jean Smith, a board member for six years, served two terms as treasurer. Tony Bowen also served six years on the board as well as several committees. Bowen has devoted time to rewriting the by-laws for the Chelsea United Way.

Starting his fourth year on the board is Robert Kozma, a former vice-president. Other award recipients were three-year board member Marketa Satterthwaite who held two terms as publicity chairman, Paul Frisinger, a past president, and Roy Greenleaf who served on various budget, finance and nominating committees.

Fall Adult Recreation Classes Offer Several New Courses

Once again, the Chelsea Recreation department will offer an adult fall recreation program. And once again, the Rec. department has come up with a number of new and exciting courses for the community to become involved in.

Director Holly Porter who recently completed the program for this fall, said she has begun to round up classes to be offered in January. The adult program she hopes will continue to expand with something for everyone.

Among the new offerings this fall is a course in advanced upholstery; for those who took the beginning course last year (beginning upholstery will also be offered) and for those who already do their own but want to learn something more. Continuing in the line of furniture will be a class in refinishing and one in caning. For those who intend to refinish and upholster they might like to complete their piece with patchwork, also new, or a woven arm cover with a class in beginning weaving.

Also new to the program is basic knitting, men's conditioning, personal typing and a course in handwriting analysis.

Registration is by phone with the instructor prior to the first class meeting. However, one may register at the first class meeting as well. Because a limited number of spaces are available, Mrs. Porter asks that those interested re-

gister as early as possible to avoid disappointment.

Fees for all classes have been determined according to the course content, length of class and the materials needed. All fees are to be paid at the first class meeting.

Classes must have a sufficient number of persons enrolled to defray the cost of instruction or the class will be canceled.

Following is a list of course specifics and a brief description of each offering.

Upholstery: Georgia Shepard will instruct persons interested in learning simple techniques for beginning upholstery. The class will meet Monday evenings, beginning Sept. 29 from 7-9 p.m. at the Sylvan Township Hall. Fee for the eight weeks will be \$10. Furniture may be stored at the class location. To register phone the instructor at 475-9315.

Advanced Upholstery: Work in advanced upholstery will include instruction in cording and cushioning. The course will be offered Thursday evenings beginning Oct. 2 from 7-9 p.m. at the Sylvan Township Hall. The fee is \$10 and the class will be limited to 15 people. Furniture may be stored at the class location. Phone 475-9315 to register.

Cake Decorating: Dorothy Hafner will be the instructor for this beginning class in cake decorating. Students will learn basic skills in

decorating, including leaves, cake borders, flowers and other designs. Frosting making and sugar molding will also be included. The class will meet Wednesdays beginning Oct. 1 in the high school home economics room from 7-9 p.m. Fee for the eight-week class is \$10. To register phone 475-8089.

Basic Knitting: Pat Dittmar, former owner and manager of the Tailfeather Boutique, will instruct students in basic knitting techniques. Students will knit two projects, one of which will be a sweater. They will learn how to make cables, buttonholes, and to change colors among other basics. The class will meet Tuesday evenings beginning Sept. 30 from 7-9 p.m. in the high school home economics room. Fee for the eight weeks is \$10. To register phone 475-2025.

Patchwork and Appliques (quilting): Mary Kump will teach her students how to do patchwork and appliques on clothing, quilts, pillows, wall hangings, table cloths and wreaths among others. Students are asked to bring cloth scraps, thread and scissors to the first class meeting. The class will meet Tuesdays beginning Sept. 30 from 7-9 p.m. in the high school home economics room. Fee for the eight-week course is \$10. To register phone 475-1517.

(Continued on page three)

United Way Campaign Goal Set at \$30,817

Because of growing inflation and numerous lay-offs, Chelsea United Way has increased its 1976 budget to \$30,817, up \$323 from the previous year's goal of \$29,994. "This year we had to cut back our monies to our member agencies by 20 percent," said chairman Marjorie Robbins. She continued, "We are hoping to go above our goal in order to make up the difference."

Topping off the list of allocations for the 13 local United Way agencies is the Chelsea Recreation Council, which is slated to receive \$7,600 toward running its extensive year-round recreation programs. The other 12 member agencies are the Huron Valley Child Guidance, Boy Scouts, Child and Family Ser-

vices; Salvation Army, Chelsea Band, Home Meal Service, Chelsea Social Services, Red Cross, Washenaw Association for Retarded Citizens, Girl Scouts, Catholic Social Services and United Way of Michigan.

Wednesday, Sept. 10, Mrs. Robbins met with her workers in the Village Council Chambers where she held a training session for area captains and solicitors. William Herbst, field representative for Michigan United Fund, presented a program and film, "Winning Role" to help this year's solicitors to do their job.

Chelsea's United Way campaign will kick-off Monday, Sept. 29 and run through Oct. 10.

Lyndon Residents Meet To Study Land Purchase

The development of approximately one-third of the land in Lyndon township will be under fire Thursday evening (tonight) as residents gather in the Lyndon Town Hall to question representatives of the Department of Natural Resources.

According to the Lyndon township supervisor, Tom Lewis, the DNR owns approximately one-third of the six square mile land area known as Lyndon township. He believes they are in the process of purchasing some 93 more acres in the South Lake area. "Much of which is under water-swamp," he said.

Lewis told that the residents are very upset as the DNR has owned the land for some time. "We want to know what their long range plans for development are," he said. "The residents are concerned about how those plans might affect them."

Lewis said that representatives of the department agreed to meet with Lyndon township residents. "They seem to be very co-opera-

tive and I have real good faith in them," he concluded.

The meeting will get under way at 7 p.m. in the Lyndon Township Hall.

David Beach Retires from Bank Position

A total of 49 years of banking experience is the achievement marked by the retirement of David A. Beach, assistant cashier of the National Bank & Trust Co. of Ann Arbor.

Beach, who lives at 237 Jefferson St., started with the bank in 1936, making his entire banking career with the same bank. He joined the State Savings Bank as a bookkeeper, and later transferred to the position of teller in the main office.

He was appointed assistant cashier in May, 1955, and has held that position until the present.



WILLARD H. JOHNSON

Administrator Named For Chelsea Hospital

Willard H. Johnson has been named administrator of the Chelsea Community Hospital by Paul E. Mann, chairman, governing board of the hospital. Johnson will assume formal responsibilities Sept. 22.

As administrator, Johnson will direct all administrative affairs, including fiscal affairs. He will work directly with the Chief of Medical Affairs to co-ordinate all medical - administrative activities and assure administrative adherence to all hospital organizational policies and procedures. Johnson

will be responsible to the governing board of the hospital.

Prior to accepting the position with Chelsea Community Hospital, Johnson served as vice-president and director of community services and medical affairs at St. Peter's Hospital in Albany, N. Y. From 1968-71 he held the position of assistant administrator at the University of Nebraska Medical Center in Omaha. Johnson completed his administrative residency in August 1968 at the Wilmington Medical Center, Wilmington, Del. (Continued on page six)



HOWARD SALYER, Chelsea co-captain, No. 20 was the recipient of a beautiful stiff-arm break off Tecumseh right tackle for a sizeable seconds after this photo was taken. Salyer ended the game gaining 87 yards for the Bulldogs.

Established 1871
The Chelsea Standard
 Telephone 475-1371
 Excellence Award By Michigan Press Association
 1951-1952-1960-1964-1965-1966
 Walter P. Leonard, Editor and Publisher

Published every Thursday morning at 300 North Main Street, Chelsea, Mich. 48118, and second class postage paid at Chelsea, Mich., under the Act of March 3, 1879.

Subscription Rates (Payable in Advance)
 In Michigan: One Year \$6.00, Six Months \$3.50, Single Copies \$1.20
 Outside Michigan: One Year \$8.50, Six Months \$5.00, Single Copies \$1.25

MEMBER
NATIONAL PAPER ASSOCIATION
 National Advertising Representative:
 MICHIGAN NEWSPAPERS, INC.
 257 Michigan Ave.
 East Lansing, Mich. 48823

Uncle Lew from Lima Says:

DEAR MISTER EDITOR:

Fall's in the air out here in the country, Mister Editor, and if all ain't right with the world, at least it's looking a lot better. August got over with, just like we figured, and right there is an improvement in the usual run of perditions. I'm with the feller that said we ought to do away with August altogether and have two Septembers, or maybe two Aprils. In the tag end of summer, the fish won't bite, the shakes can't see and they will bite, ever dog is in a bad mood and things general is in a turmoil.

The fellers was in good spirits at the country store Saturday night. Clem Webster even was able to find a kind word to say about President Veto Ford. Clem said he took hope that the President and the Congress final hit on something they can agree on. When Congress raised its own wages last month, the President was quick to give his blessing. While the two branches of Government are on this honeymoon, Clem went on, maybe they can come up with a way to figure how we can keep from taking turns keeping warm this winter. Neither one has wasted any energy trying to save our energy, was Clem's words.

It use to be, Zeke Grubb said, that September was football time, but that don't go by the calendar now. We been having reruns of last fall's reruns all summer, and now we're coming around to live instant replays. Zeke had read where in the New Orleans Superdome they got ways to show people in the stadium replays of what they are seeing. Zeke said he figgers it could cloud up and rain in that place, and they would do a rerun of it.

Practical speaking, allowed Ed Dobbins, there is a way to do, undo and redo everything. Ed had saw where telephone companies are planning to charge for the operator to give out numbers, and he saw where this feller was thinking ahead. He has ordered telephone books from thousands of towns, so now all he's got to do is find the right book, and find room in his house for the telephone. Ed also reported where chickens are used to direct traffic in Napa, California. Drivers that wouldn't slow down for a policeman will stop for a chicken in the street, so the parks in Napa

have chickens running all over to keep the streets safe.
 Turning to other matters, Clem wondered if there are any other Democrats who ain't running for President. He said it looks like it's going to be easier to count them that ain't than are. Listening to all the remedies to all the country's ailments being offered by all the candidates, Clem said, you wonder if the Federal Trade Commission hadn't ought to step in and call for truth in advertising. If Mickey Mantle has got to drink the beer he plugs there ought to be a way to make a politician back up his product, was Clem's words.
 The FTC probably classes politics as "fanciful," which means we we ain't supposed to believe it.
 Yours truly,
 Uncle Lew.

Dial-A-Garden Topics Listed

Dial-A-Garden, with pre-recorded daily gardening tips, is in operation 24 hours per day, 7 days per week. The Dial-A-Garden phone number is 994-1122.

Friday, Sept. 19 and week-end-Planting Bulbs for Spring.
 Monday, Sept. 22-From Pumpkins to Pie.
 Tuesday, Sept. 23-Evergreens Do Loose Some of Their Needles.
 Wednesday, Sept. 24-Storing Pesticides over the Winter.
 Thursday, Sept. 25-Winter Storage of Dahlia Roots and Tender Corms Tubers.

4-H Exploration Days Scheduled Oct. 17-18 at EMU

Exploration Days for 4-H members will be held at Eastern Michigan University, Ypsilanti, on Oct. 17 and 18, announces Rod Pettes, 4-H Youth agent.
 The program was a huge success last year when more than 200 persons attended, he says. It is important that anyone planning to attend make his reservations early. The program includes many "action-learning" activities for young people.
 For further information call the 4-H office, 994-2457.

Telephone Your Club News To 475-1371.

MICHIGAN MIRROR

By Elmer E. White, Secretary, Michigan Press Association

Toward Good Health

How would you like:
 —assurances that quality health care will be yours, no matter how much you can afford to pay a doctor or hospital?
 —improved accessibility to all health services, such as doctors and dentists?
 —a "quality environment" that minimizes potential health problems?

Most folks would answer "yes" to all those questions. So does the state. The three statements above are a part of the 21-item document called "Goals for Michigan's Health: A Process for State Health Plan Development."

The goals, endorsed by Gov. William Milliken, are the result of a 10-month effort by the state office of Health and Medical Affairs (Michigan's health planning agency) and the governor's Health Planning Advisory Council.

They represent the views of many more people than those involved on those two bodies, however. Public and private agencies throughout the state, nearly 100 in all, participated in initial identification of the major health problem areas.

Today, task forces are delving deeply into the goal areas, trying to come up with some workable proposals. Their work then will be incorporated in a comprehensive state health plan, scheduled for completion by mid-1976.

"These state health goals will focus the attention of the state in directions which can best serve the health needs of its citizens," the governor says.

In addition to the areas mentioned above, the goals deal with health education, avoidance of "unproductive duplication" of health facilities and manpower, and improved maternal and child health care.

They also speak of active support for civil rights law enforcement programs aimed at lessening mortality from such diseases as cancer, and "reducing morbidity and mortality from mental disorders, mental illness, mental retardation and substance abuse."

They also speak of active support for civil rights law enforcement programs aimed at lessening mortality from such diseases as cancer, and "reducing morbidity and mortality from mental disorders, mental illness, mental retardation and substance abuse."

They also speak of active support for civil rights law enforcement programs aimed at lessening mortality from such diseases as cancer, and "reducing morbidity and mortality from mental disorders, mental illness, mental retardation and substance abuse."

They also speak of active support for civil rights law enforcement programs aimed at lessening mortality from such diseases as cancer, and "reducing morbidity and mortality from mental disorders, mental illness, mental retardation and substance abuse."

They also speak of active support for civil rights law enforcement programs aimed at lessening mortality from such diseases as cancer, and "reducing morbidity and mortality from mental disorders, mental illness, mental retardation and substance abuse."

They also speak of active support for civil rights law enforcement programs aimed at lessening mortality from such diseases as cancer, and "reducing morbidity and mortality from mental disorders, mental illness, mental retardation and substance abuse."

They also speak of active support for civil rights law enforcement programs aimed at lessening mortality from such diseases as cancer, and "reducing morbidity and mortality from mental disorders, mental illness, mental retardation and substance abuse."

They also speak of active support for civil rights law enforcement programs aimed at lessening mortality from such diseases as cancer, and "reducing morbidity and mortality from mental disorders, mental illness, mental retardation and substance abuse."

They also speak of active support for civil rights law enforcement programs aimed at lessening mortality from such diseases as cancer, and "reducing morbidity and mortality from mental disorders, mental illness, mental retardation and substance abuse."

They also speak of active support for civil rights law enforcement programs aimed at lessening mortality from such diseases as cancer, and "reducing morbidity and mortality from mental disorders, mental illness, mental retardation and substance abuse."

They also speak of active support for civil rights law enforcement programs aimed at lessening mortality from such diseases as cancer, and "reducing morbidity and mortality from mental disorders, mental illness, mental retardation and substance abuse."

They also speak of active support for civil rights law enforcement programs aimed at lessening mortality from such diseases as cancer, and "reducing morbidity and mortality from mental disorders, mental illness, mental retardation and substance abuse."

They also speak of active support for civil rights law enforcement programs aimed at lessening mortality from such diseases as cancer, and "reducing morbidity and mortality from mental disorders, mental illness, mental retardation and substance abuse."

They also speak of active support for civil rights law enforcement programs aimed at lessening mortality from such diseases as cancer, and "reducing morbidity and mortality from mental disorders, mental illness, mental retardation and substance abuse."

They also speak of active support for civil rights law enforcement programs aimed at lessening mortality from such diseases as cancer, and "reducing morbidity and mortality from mental disorders, mental illness, mental retardation and substance abuse."

They also speak of active support for civil rights law enforcement programs aimed at lessening mortality from such diseases as cancer, and "reducing morbidity and mortality from mental disorders, mental illness, mental retardation and substance abuse."

They also speak of active support for civil rights law enforcement programs aimed at lessening mortality from such diseases as cancer, and "reducing morbidity and mortality from mental disorders, mental illness, mental retardation and substance abuse."

They also speak of active support for civil rights law enforcement programs aimed at lessening mortality from such diseases as cancer, and "reducing morbidity and mortality from mental disorders, mental illness, mental retardation and substance abuse."

They also speak of active support for civil rights law enforcement programs aimed at lessening mortality from such diseases as cancer, and "reducing morbidity and mortality from mental disorders, mental illness, mental retardation and substance abuse."

They also speak of active support for civil rights law enforcement programs aimed at lessening mortality from such diseases as cancer, and "reducing morbidity and mortality from mental disorders, mental illness, mental retardation and substance abuse."

They also speak of active support for civil rights law enforcement programs aimed at lessening mortality from such diseases as cancer, and "reducing morbidity and mortality from mental disorders, mental illness, mental retardation and substance abuse."

They also speak of active support for civil rights law enforcement programs aimed at lessening mortality from such diseases as cancer, and "reducing morbidity and mortality from mental disorders, mental illness, mental retardation and substance abuse."

They also speak of active support for civil rights law enforcement programs aimed at lessening mortality from such diseases as cancer, and "reducing morbidity and mortality from mental disorders, mental illness, mental retardation and substance abuse."

They also speak of active support for civil rights law enforcement programs aimed at lessening mortality from such diseases as cancer, and "reducing morbidity and mortality from mental disorders, mental illness, mental retardation and substance abuse."

purpose of the Parent-Teacher Council is to give parents an opportunity to express themselves in a systematic manner.

The first of the lectures in the annual Lecture Series will be given Thursday evening, Sept. 27 by Preston W. Stesson, professor of history at the University of Michigan. His topic will be "Current Events."

Thirty Cub Scouts, accompanied by Charles Cameron, Lorenz Wink, Walter Braden, William Collins, Paul Morley and Lloyd Keeney, took a trip Saturday to Detroit where they saw the Detroit Tigers defeat the Cleveland Indians at Briggs Stadium.

Ned Stults, a former coach at Chelsea High School, has accepted a position as line coach and head baseball coach at Holland.

City delivery mail service will start in Chelsea on Wednesday, Oct. 1 with Roy S. Bertke as the regular carrier on Route 1 and Anthony L. Juergens as auxiliary carrier on Route 2, according to Postmaster H. D. Withersall.

The office of John P. Keusch, attorney, and the insurance office of A. D. Mayer will be moved Oct. 1 from the Egler building to the rooms in the Freeman building formerly occupied by the Michigan Bell Telephone Co.

Herbert J. McKune Unit No. 31, the American Legion Auxiliary, held open house Wednesday evening at the Cavanaugh Lake home, the occasion being the installation of officers of the unit. The honor guest, Mrs. Alice Schneider, district president-elect of Tecumseh, acted as installation officer, and the installation ceremonies were conducted by the newly organized installing team from Ann Arbor with Mrs. Edna Alder as chaplain.

The Beginners' class of St. Paul's Sunday school, in charge of Miss Lillian Wachsmuth, Mrs. J. N. Stietz, Mrs. Elmer Pierce and Mrs. O. Walker, will hold their annual farewell party Saturday afternoon from 2 to 4, at the church hall for beginners who will be promoted to the primary department.

A soldier in the army of the Duke of Marlborough once took the name of that general for his own. The Duke reprimanded the errant warrior who defended himself resolutely: "I am not to blame, General. I did the best I could. If I could have found a more illustrious name than yours, I would have used it."

Suds and More Suds
 Beer is big among American drinkers.

Current figures show a per capita consumption of 21.1 gallons for every man, woman and child in the country—basically a six-pack a week for all those 18 and over during 1974.

That, according to the Michigan Council on Alcohol Problems, is an all-time high.

Unclaimed lottery prize money—a healthy \$2 million for fiscal 1974—goes back to Michigan's general fund to help pay all the state's bills.

Rep. Paul Rosenbaum, D-Battle Creek, thinks that's the wrong thing to do with those dollars.

Unclaimed winnings, he says, should go back into the lottery bureau purse to boost the number or size of prizes.

"The unclaimed money came from lottery players and it should go back to lottery players," Rosenbaum says.

Michigan could use the money for other purposes, especially at the present time," Rosenbaum adds.

But, he says, "if we channel that much money into prizes, it would make the lottery even more attractive, which in turn could generate even more lottery revenue."

The lawmaker says he plans to urge action on his proposal when the legislature reconvenes later this fall.

WRONG NAME
 A soldier in the army of the Duke of Marlborough once took the name of that general for his own.

The Duke reprimanded the errant warrior who defended himself resolutely: "I am not to blame, General. I did the best I could. If I could have found a more illustrious name than yours, I would have used it."

Suds and More Suds
 Beer is big among American drinkers.

Current figures show a per capita consumption of 21.1 gallons for every man, woman and child in the country—basically a six-pack a week for all those 18 and over during 1974.

That, according to the Michigan Council on Alcohol Problems, is an all-time high.

Unclaimed lottery prize money—a healthy \$2 million for fiscal 1974—goes back to Michigan's general fund to help pay all the state's bills.

Rep. Paul Rosenbaum, D-Battle Creek, thinks that's the wrong thing to do with those dollars.

Unclaimed winnings, he says, should go back into the lottery bureau purse to boost the number or size of prizes.

"The unclaimed money came from lottery players and it should go back to lottery players," Rosenbaum says.

Michigan could use the money for other purposes, especially at the present time," Rosenbaum adds.

But, he says, "if we channel that much money into prizes, it would make the lottery even more attractive, which in turn could generate even more lottery revenue."

The lawmaker says he plans to urge action on his proposal when the legislature reconvenes later this fall.

WRONG NAME
 A soldier in the army of the Duke of Marlborough once took the name of that general for his own.

The Duke reprimanded the errant warrior who defended himself resolutely: "I am not to blame, General. I did the best I could. If I could have found a more illustrious name than yours, I would have used it."

all participated in initial identification of the major health problem areas.

Today, task forces are delving deeply into the goal areas, trying to come up with some workable proposals. Their work then will be incorporated in a comprehensive state health plan, scheduled for completion by mid-1976.

"These state health goals will focus the attention of the state in directions which can best serve the health needs of its citizens," the governor says.

In addition to the areas mentioned above, the goals deal with health education, avoidance of "unproductive duplication" of health facilities and manpower, and improved maternal and child health care.

They also speak of active support for civil rights law enforcement programs aimed at lessening mortality from such diseases as cancer, and "reducing morbidity and mortality from mental disorders, mental illness, mental retardation and substance abuse."

They also speak of active support for civil rights law enforcement programs aimed at lessening mortality from such diseases as cancer, and "reducing morbidity and mortality from mental disorders, mental illness, mental retardation and substance abuse."

They also speak of active support for civil rights law enforcement programs aimed at lessening mortality from such diseases as cancer, and "reducing morbidity and mortality from mental disorders, mental illness, mental retardation and substance abuse."

They also speak of active support for civil rights law enforcement programs aimed at lessening mortality from such diseases as cancer, and "reducing morbidity and mortality from mental disorders, mental illness, mental retardation and substance abuse."

They also speak of active support for civil rights law enforcement programs aimed at lessening mortality from such diseases as cancer, and "reducing morbidity and mortality from mental disorders, mental illness, mental retardation and substance abuse."

They also speak of active support for civil rights law enforcement programs aimed at lessening mortality from such diseases as cancer, and "reducing morbidity and mortality from mental disorders, mental illness, mental retardation and substance abuse."

They also speak of active support for civil rights law enforcement programs aimed at lessening mortality from such diseases as cancer, and "reducing morbidity and mortality from mental disorders, mental illness, mental retardation and substance abuse."

They also speak of active support for civil rights law enforcement programs aimed at lessening mortality from such diseases as cancer, and "reducing morbidity and mortality from mental disorders, mental illness, mental retardation and substance abuse."

They also speak of active support for civil rights law enforcement programs aimed at lessening mortality from such diseases as cancer, and "reducing morbidity and mortality from mental disorders, mental illness, mental retardation and substance abuse."

They also speak of active support for civil rights law enforcement programs aimed at lessening mortality from such diseases as cancer, and "reducing morbidity and mortality from mental disorders, mental illness, mental retardation and substance abuse."

They also speak of active support for civil rights law enforcement programs aimed at lessening mortality from such diseases as cancer, and "reducing morbidity and mortality from mental disorders, mental illness, mental retardation and substance abuse."

They also speak of active support for civil rights law enforcement programs aimed at lessening mortality from such diseases as cancer, and "reducing morbidity and mortality from mental disorders, mental illness, mental retardation and substance abuse."

They also speak of active support for civil rights law enforcement programs aimed at lessening mortality from such diseases as cancer, and "reducing morbidity and mortality from mental disorders, mental illness, mental retardation and substance abuse."

They also speak of active support for civil rights law enforcement programs aimed at lessening mortality from such diseases as cancer, and "reducing morbidity and mortality from mental disorders, mental illness, mental retardation and substance abuse."

They also speak of active support for civil rights law enforcement programs aimed at lessening mortality from such diseases as cancer, and "reducing morbidity and mortality from mental disorders, mental illness, mental retardation and substance abuse."

They also speak of active support for civil rights law enforcement programs aimed at lessening mortality from such diseases as cancer, and "reducing morbidity and mortality from mental disorders, mental illness, mental retardation and substance abuse."

They also speak of active support for civil rights law enforcement programs aimed at lessening mortality from such diseases as cancer, and "reducing morbidity and mortality from mental disorders, mental illness, mental retardation and substance abuse."

They also speak of active support for civil rights law enforcement programs aimed at lessening mortality from such diseases as cancer, and "reducing morbidity and mortality from mental disorders, mental illness, mental retardation and substance abuse."

They also speak of active support for civil rights law enforcement programs aimed at lessening mortality from such diseases as cancer, and "reducing morbidity and mortality from mental disorders, mental illness, mental retardation and substance abuse."

They also speak of active support for civil rights law enforcement programs aimed at lessening mortality from such diseases as cancer, and "reducing morbidity and mortality from mental disorders, mental illness, mental retardation and substance abuse."

They also speak of active support for civil rights law enforcement programs aimed at lessening mortality from such diseases as cancer, and "reducing morbidity and mortality from mental disorders, mental illness, mental retardation and substance abuse."

They also speak of active support for civil rights law enforcement programs aimed at lessening mortality from such diseases as cancer, and "reducing morbidity and mortality from mental disorders, mental illness, mental retardation and substance abuse."

They also speak of active support for civil rights law enforcement programs aimed at lessening mortality from such diseases as cancer, and "reducing morbidity and mortality from mental disorders, mental illness, mental retardation and substance abuse."

They also speak of active support for civil rights law enforcement programs aimed at lessening mortality from such diseases as cancer, and "reducing morbidity and mortality from mental disorders, mental illness, mental retardation and substance abuse."

They also speak of active support for civil rights law enforcement programs aimed at lessening mortality from such diseases as cancer, and "reducing morbidity and mortality from mental disorders, mental illness, mental retardation and substance abuse."

They also speak of active support for civil rights law enforcement programs aimed at lessening mortality from such diseases as cancer, and "reducing morbidity and mortality from mental disorders, mental illness, mental retardation and substance abuse."

They also speak of active support for civil rights law enforcement programs aimed at lessening mortality from such diseases as cancer, and "reducing morbidity and mortality from mental disorders, mental illness, mental retardation and substance abuse."

They also speak of active support for civil rights law enforcement programs aimed at lessening mortality from such diseases as cancer, and "reducing morbidity and mortality from mental disorders, mental illness, mental retardation and substance abuse."

Karate Showman M. Crain Coming To Ann Arbor

There is a Kung-Fu and Karate craze existing in the United States today that enables Mike Crain to be one of the most sought after assembly speakers in the country. Every year he speaks to more than half a million students in colleges, high schools, junior high and elementary schools.

Mike Crain is considered to be one of the top exhibitionists in the U. S. He has been featured in Sports Illustrated, Newsweek, and People Magazine, on national TV specials, and on more than 50 TV interviews each year. He also holds a few world records; he is the only man to have broken 1,000 pounds of ice, 7 feet thick, with his elbow.

While he's in Ann Arbor, Mike will be cutting a watermelon in half on the stomach of some brave volunteer using his Samurai sword while blindfolded.

Mike uses these feats of Kung-Fu and Karate to attract an audience, and then takes the opportunity to preach the Gospel which changed his life wherever and whenever possible.

Mike Crain will be appearing at Pioneer High school on Saturday night, Oct. 4, at 7:30 p.m. His appearance is being sponsored by Huron Valley Youth for Christ. There is no admission charge.

Country Music Jamboree Stated At Legion Home

Country music fans are in for a treat on Sunday, Sept. 21 at the American Legion Home in Dexter.

The first Country Music Jamboree will take place from 1 p.m. to 6 p.m. With a live broadcast by radio station WNRN. The Legionnaires hope to make this an annual event.

A benefit for the Dexter community, all residents are welcome. A small family donation will be asked. Refreshments will be available.

Live country music will be heard from The Lakers, The Country Winners, The Mark IV, The Beltones, and Danny Dee and the Royal Lancers.

Ice skater: One who is all figured out.

Getting Serious About I.R.A.

(Individual Retirement Account)

You've seen the ads and read a lot about it in newspapers and magazines. Now's the time to find out exactly what it means to you in reduced taxes. Let us provide you with a no obligation personalized analysis of several fully qualified I.R.A. plans. Act now to get your tax break for 1975!

For further information call or write:

Robert R. Kley Associates, Inc.
 3420 Vintage Valley
 Ann Arbor, Mich. 48105
 (313) 761-3655

Your I.R.A. - Keogh Headquarters

Beer is big among American drinkers.

Current figures show a per capita consumption of 21.1 gallons for every man, woman and child in the country—basically a six-pack a week for all those 18 and over during 1974.

That, according to the Michigan Council on Alcohol Problems, is an all-time high.

Unclaimed lottery prize money—a healthy \$2 million for fiscal 1974—goes back to Michigan's general fund to help pay all the state's bills.

Rep. Paul Rosenbaum, D-Battle Creek, thinks that's the wrong thing to do with those dollars.

Unclaimed winnings, he says, should go back into the lottery bureau purse to boost the number or size of prizes.

"The unclaimed money came from lottery players and it should go back to lottery players," Rosenbaum says.

Michigan could use the money for other purposes, especially at the present time," Rosenbaum adds.

But, he says, "if we channel that much money into prizes, it would make the lottery even more attractive, which in turn could generate even more lottery revenue."

The lawmaker says he plans to urge action on his proposal when the legislature reconvenes later this fall.

WRONG NAME
 A soldier in the army of the Duke of Marlborough once took the name of that general for his own.

The Duke reprimanded the errant warrior who defended himself resolutely: "I am not to blame, General. I did the best I could. If I could have found a more illustrious name than yours, I would have used it."

Suds and More Suds
 Beer is big among American drinkers.

Current figures show a per capita consumption of 21.1 gallons for every man, woman and child in the country—basically a six-pack a week for all those 18 and over during 1974.

What's Cooking in Michigan

By Larzette Trimm
 Michigan Dept. of Agriculture
 Marketing Information Specialist

It's the best time to get acquainted with the many apple varieties grown in the state. All are excellent but each has distinct qualities which make it different from the others. McIntosh, Jonathan, Northern Spy and Delicious are the "big four" apple varieties in our state, according to market officials of the Michigan Department of Agriculture, accounting for nearly 75 percent of total production.

Place a bowl of bright McIntosh on a table for an orchard fresh aroma throughout your home. They're the most aromatic of the apple varieties. Slightly tart with white flesh, McIntosh apples make superb applesauce. They're excellent for eating fresh and good for baking, cooking and freezing.

Identify McIntosh by their deer-like color, sometimes striped with a green background.

Just the right size for pocket, purse and lunch pail are Jonathan apples. Their sweet tartness and firm flesh make them excellent for quantities for freezing and canning, baked goods and salads. Jonathan are deep red in color and small to medium in size in comparison to other varieties.

The firm, crisp composition of Northern Spy makes it tops for pies and baked apples. Large bright striped and mottled red on yellow, this variety has a moderately tart, robust flavor.

Last of the big four is the Delicious apple with the attractive conical shape and five points on the bottom. Most popular of the apple varieties, the mild flavor makes them best for eating fresh and in salads.

POOR PRESIDENT
 When former President Roosevelt was touring the world, he stayed at the royal palace while in Stockholm. When asked how he liked living in a palace, Roosevelt replied: "I don't like them. You can't ring a bell and complain about your room."

CHIROPRACTIC FOR LIFE
 CHIROPRACTIC CENTER
 PHONE (313) 475-7633
 7970 Clark Lake Rd. Chelsea, Mich.

Country

Gridders of the Week



CHELSEA VARSITY FOOTBALL CO-CAPTAINS are Dennis Bauer and Howard Salyer. Bauer, a third-year varsity veteran plays both offensive guard and defensive linebacker for the Bulldogs. Optimistic for the Bulldogs' season, Bauer said, "I've been playing varsity ball for three years and this team has the most potential of any team I've played with before." In the 1974 season, Bauer made All-Conference linebacker and offensive guard. He also received Honorable Mention in the state for his play. Aside from football, the 195-pound senior is a member of the varsity wrestling team—a four year letter-winner, and will be a fourth-year veteran of the varsity track team. An active member of the Chelsea Players, he has a brother, Bart, 15, and a sister Gayla, 7. He is the son of Mr. and Mrs. Norman Bauer.

HOWARD SALYER is in his second year as a varsity ball player and remarked that he doesn't care to make any predictions for the season, though he is admittedly optimistic. "I just want to play good football," he said. Salyer plays halfback both ways for the Bulldogs and gained 87 yards in their first game of the season against Tecumseh last Friday. He is a two-year veteran of the varsity basketball team and a four-year track veteran. Aside from his prowess as an athlete, Howard has established a reputation for himself as an actor. As a member of the Chelsea Players he has participated in a number of musicals and had the starring role in their summer production, "You're A Good Man Charlie Brown." The son of Mrs. Roma Salyer, Howard has two brothers and two sisters, one of which, Brenda, remains at home.

Fall Adult Recreation Classes Offer Several New Courses

(Continued from page one)

Beginning Sewing: Instructing the class will be Markita Satterthwaite. Students will learn basic techniques in pattern construction and will sew one garment. The class will meet Mondays beginning Sept. 29 from 7-9 p.m. in the high school home economics room. Fee for the 10-week course is \$10. To register phone 475-1793.

Beginning Weaving: Pat Smith will teach students a basic design and weaving class using a frame loom. Students will weave from one to three projects. The class will meet Thursday evenings beginning Oct. 2 from 7-9 p.m. the place to be announced. Fee for the eight weeks is \$10. To register phone 971-9151.

Furniture Refinishing and Caning: Gloria Brigham will instruct students in the basic method of stripping and refinishing various woods. The instructor recommends a small piece of furniture. A lesson in antiquing and graining and one on restoring antiques will also be included. Students will also learn the basic method in restoring a cane chair. A lesson in pressed caning will also be offered. A list of supplies will be available through the instructor. The class will meet for five weeks beginning Thursday, Oct. 2 for refinishing and Thursday, Nov. 6 for caning from 1-3 p.m. place to be announced. The fee will be \$7 for each five week session. To register phone 426-4892.

Christmas Crafts: This popular crafts course is being offered at three different times in an attempt to accommodate all persons interested in creating indoor and outdoor home decorations for the holiday season. There may be a duplication of projects presented in previous years. Each course will present the same projects. Gloria

Greenleaf will be teaching two sections. She will hold two six-week classes beginning Thursday after noon Oct. 9 from 1-3 p.m., place to be announced. Her evening course will begin Thursday evening Oct. 9 in the high school home economics room from 7-9 p.m. Fee for the course will be \$10. To register phone 475-8005. Lenor Mattoff will offer her Christmas crafts course beginning Monday evening, Oct. 6 from 7-9 p.m. in the home economics room of the high school. Fee for the course is \$10. To register phone 475-7673.

Ladies Night Out: Terry Schreiner will instruct this course designed to give women a chance to exercise and enjoy the use of all physical education equipment available at the high school. The class will meet Mondays beginning Sept. 2 from 8-10 p.m. in the high school gymnasium. Fee for the eight weeks is \$8. To register phone 475-2536.

Men's Conditioning: Dick McCall will supervise and instruct men in unstructured activities using the high school facilities. Work will include use of the weight machines, paddleball, volleyball and more. The course will meet Wednesday evenings beginning Oct. 1 from 8-10 p.m. in the high school gymnasium. Fee for the eight week course is \$8. To register phone 475-7969.

Typing for Personal Use: Carol Kvarnberg will instruct the course in typing personal letters, etc. The course will meet Thursday evening beginning Oct. 2 from 7-9 p.m. in the high school typing room. Fee for the eight weeks is \$10. To register phone 475-7324.

Conversational Spanish: Instructing this beginning course will be Dr. Hope Lowry. The course is for those with half-dream travel plans of heading south when the snow flies in Michigan. Here is

a chance to learn a little or a lot of conversational Spanish. The course will be offered Tuesday and Thursday evenings from 7-9 p.m. in the high school classroom 118. Fee for the 10-week course is \$10. To register phone 475-2671.

Advanced Conversational Spanish: The course to be taught by Dr. Hope Lowry is designed for those who have had some exposure to Spanish. The course will allow the student to refresh and expand his Spanish vocabulary. The class will meet Mondays beginning Sept. 29 in the high school classroom 118 from 7-9 p.m. Fee for the 10 weeks is \$5. To register phone 475-2671.

Introduction to Handwriting Analysis: Taught by Tom Killilea, a certified graphoanalyst, the class will cover basic principles and help everyday applications. Graphoanalysis is the study of handwriting to determine individual character and personality traits and is based on more than 50 years of validated research. The class will meet Mondays beginning Sept. 29 from 7-9 p.m. in the high school classroom 113. Fee for the eight weeks is \$13 which includes a study kit. To register phone 475-9315.

COOPER'S COMING

BIG DON HIMSELF

with a great western film in the coming Travel Series

Only \$8 a season ticket BE THERE!

Varsity Golf Schedule

Sept. 18—Saline-Chelsea	at Dexter
Sept. 22—Pinckney Invitational	at Pinckney
Sept. 23—Dexter	at Away
Sept. 25—Chelsea-Saline	at Brighton
Sept. 27—Grass Lake Invitational	at Grass Lake
Sept. 30—Milan-South Lyon	at Home
Oct. 2—Chelsea-Novi	at Lincoln
Oct. 3—Dexter Invitational	at Dexter
Oct. 8—Conference Meet	at Dexter
Oct. 11—State Regional	

All home meets are scheduled to begin promptly at 3:15 p.m., the Inverness Golf Course.



you can relax...
Dutch Boy
is on the job!

Here's the double bonus you get every time you use "Dutch Boy" Paint. First, "Dutch Boy" transforms your home with beauty—then "Dutch Boy" makes it easier to keep beautiful. "Dutch Boy" puts off repainting longer, too. That's why so many professional painters and homeowners use nothing but "Dutch Boy." Come in today and start relaxing the "Dutch Boy" way!

You will remember the quality of Dutch Boy paints long after the price is forgotten.

MERKEL Home Furnishings

FULL LINE SUPERMARKET

BEER - WINE - LIQUOR
AUTHORIZED
FOOD STAMP STORE
LOTTERY TICKETS
MARATHON GAS PUMPS

Jiffy market

Big Enough To Serve You . . . Small Enough To Know You!

Open 7 Days A Week

7 a.m. to 10 p.m.
Corner Sibley & Werkner Rds.
PHONE 475-1701

Sale Prices Effective
Thursday, Sept. 18 thru Sunday, Sept. 21

TOP VALUE FOODS - GUARANTEED SATISFACTION - COURTEOUS SERVICE

Jiffy Market - Chelsea's Milk Stop



FARM MAID
HOMOGENIZED
MILK

gal. \$1.19

FARM MAID PURE
ORANGE JUICE
1/2 gal. 59¢

FARM MAID
COTTAGE CHEESE
1-Lb. Crtn. 59¢ Real Good!

FARM MAID DELICIOUS
CHOCOLATE MILK
qt. 39¢

BUY THE BEST - BUY FARM MAID

U.S. GRADE A
ALL-WHITE
MEDIUM SIZE
FRESH

EGGS
59¢ doz.

KRAFT
REAL
Mayonnaise
1 Pt. Jar 49¢

JIFFY SPECIAL
TWO GREAT COLAS!

COLA SALE
10-OZ. BOTTLES
Pepsi-Cola . . . 8 pac \$1.49
1 PINT BOTTLES
R.C. Cola 6 pac \$1.29

SUNNY CREST FARMS

POTATOES

JIFFY SPECIAL 50-Lb. Bag \$2.25
SIZE: Unclassified

HOME TOWN

POTATO CHIPS

JIFFY SPECIAL 9-Oz. Bag 49¢

DANNON
YOGURT
ASSORTMENT

3 8-Oz. Crtns. \$1

CHOICE
BEEF

SIDES - FRONTS - HINDS
WHOLE RIBS - WHOLE LOINS

CUSTOM CUTTING - WRAPPING - FREEZING
QUICK SERVICE ON BUTCHERING
YOUR BEEF OR OURS

BEEF and PORK

YOUNG - LEAN - TENDER

PORK LOINS

14-Lb. Avg. \$1.39 lb.

Quarter Loin Special

9 to 11 Chops \$1.49 lb.

U.S.D.A. CHOICE BEEF

RIB STEAKS
\$1.59 lb.

U. S. CHOICE YOUNG-TENDER HURRED
SHORT BEEF CHUNK
RIBS LIVER BOLOGNA
49c lb. 49c lb. 79c lb.

JIFFY MARKET'S MARATHON GAS PUMPS

MARATHON ALL SEASON
REGULAR GAS 58.9 PREMIUM LEAD FREE 59.9 10W-30 MOTOR OIL 69¢
PRICES INCLUDES ALL TAXES ONE U.S. QUART

Mich. State Lottery Tickets - Fresh Meats - Beer - Wine - Produce - Frozen Foods - Ice - Health and Beauty Aids - Groceries - Fresh Meats - Daily and Sunday Papers

FOR PROFIT

FEED



Feed Formulas Tested, Proved To Get Results

Extra proteins, vitamins and minerals in proper balance, scientifically blended, make our feeds real profit producers for you.

Farmers' Supply Co.

Phone GR 5-5511

SCHOOL LUNCH MENU!

Week of Sept. 22-23

Monday—Hot dogs with buns and trimmings, pork and beans, apple sauce, cookie and milk.

Tuesday—Spaghetti with cheese, green beans, bread and butter, peaches, cake and milk.

Wednesday — Hamburgers with buns and trimmings, french fries, ginger bread with topping, milk.

Thursday — Savory beef over mashed potatoes, buttered carrots, bread and butter, pudding, milk.

Friday—Fishburgers with buns and tartar sauce, cabbage salad potato chips, fruit coffee cake, milk.

Note—lunches will be served only at the high school and Beach Middle school. Lunches will be made available to both North and South elementary students once construction on the cafeteria is complete.

LOSE UGLY FAT

Start losing weight today or money back. MONADEX is a tiny tablet and easy to take. MONADEX will help curb your desire for excess food. Eat less—weigh less. Contains no dangerous drugs and will not make you nervous. No strenuous exercise. Change your life... start today. MONADEX cost \$3.00 for a 20 day supply. Large economy size is \$5.00. Also try AQUATABS—they work gently to help you lose water-bloat. AQUATABS—a "water pill" that works—\$3.00. Both guaranteed and sold by CHELSEA DRUG STORE 181 N. Main St. - Mail Orders Filled



Dr. Frederick S. van Reesema

FAT ENERGY

Fat is the most concentrated source of food energy. It supplies 9 calories per gram. Protein and carbohydrates, the other two, principal sources of food energy, supply 4 calories per gram.

MOSTLY MUSHROOMS

Combine sliced mushrooms, diced celery, green pepper and onion, each salad oil and lemon juice—plus 1 tablespoon wine vinegar and salt and pepper to taste.

Chelsea Hospital Names Chief of Medical Affairs

Dr. Frederick S. van Reesema has been appointed Chief of Medical Affairs of the Chelsea Community Hospital, it was announced today by Paul E. Mann, chairman of the governing board. Dr. van Reesema assumed the position in late July.

As Chief of Medical Affairs, Dr. van Reesema directs all medical affairs and co-ordinates all medical-administrative activities with the administrator of the hospital. He will insure that all hospital organizational policies and procedures are adhered to. In addition, he will also act as an advisor and consultant to the administrator and director of nursing in matters relating to the improvement of patient care.

Born in Semarang-Java-Indonesia Dr. van Reesema went to Holland for his pre-university education. In 1953 he received his doctor of medicine from the University of Leiden. The following year he came to the United States to do his internship and residency in internal medicine at St. Joseph Mercy Hospital in Ann Arbor.

In 1959, Dr. van Reesema began a private practice of internal medicine with Dr. Alexander Gotz in

Ann Arbor. He has since been an active member of St. Joseph Mercy Hospital staff. A certified specialist by the American Board of Internal Medicine, Dr. van Reesema was first acquainted with the Chelsea Community Hospital when he became actively involved in medical audit to assure quality medical care, and then in the new intensive and

coronary care unit in the spring of 1974. Dr. van Reesema is a member of the American College of Physicians, Washtenaw County Medical Society and its parent organizations, the American Diabetes Association and the American Heart Association. He has been appointed Medical Director of Lutheran Retirement Center in Ann Arbor and serves as a clinical instructor in internal medicine at the University of Michigan Medical Center. Dr. van Reesema, his wife and five children reside in Ann Arbor. Subscribe today to The Standard!

CHELSEA GLASS WORKS

WORKMANSHIP AND MATERIALS FULLY GUARANTEED.
Open Daily 8 a.m. to 5 p.m.; Sat., 8 a.m. to 1 p.m.
140 W. Middle, Chelsea Phone (313) 475-8667

WE REPAIR AND REPLACE:

- ★ STORE FRONTS
- ★ FURNITURE TOPS
- ★ SHOWER DOORS
- ★ THERMOPANES
- ★ AUTO GLASS - Including Windshields

Free Pick-up and delivery on auto work.

Storm Door & Window Reglazing & Screens

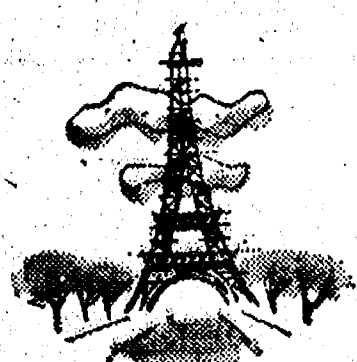
COMMERCIAL BUILDINGS OR RESIDENTIAL

PROMPT SERVICE REASONABLE PRICES

This Year **Vacation** *CLOSER TO HOME*

CHELSEA KIWANIS PROUDLY PRESENTS A TRULY OUTSTANDING TRAVEL & ADVENTURE SEASON

6 SPECTACULAR FULL-COLOR FILMS
PERSONALLY NARRATED BY THE COUNTRY'S TOP ADVENTURERS
TICKETS GO ON SALE NEXT TUESDAY, SEPT. 23rd.



SATURDAY, OCTOBER 25th
NICOL SMITH PRESENTS
★ **"ENCHANTING BALI"**



SATURDAY, DECEMBER 6th
JULIAN GROMER PRESENTS
★ **"Western U.S. on Bicycles"**



SATURDAY, JANUARY 24th
JAY GIERKY PRESENTS
★ **"NEW ENGLAND R.F.D."**

PLACE: Chelsea High Auditorium
TIME: 8 p.m. Sharp
PROCEEDS: To Local Kiwanis Projects

SEASON TICKET

ONLY **\$8⁰⁰**

★ **SPECIAL NOTE...**

When you buy a season ticket you're really buying 6 admissions — to be used as you choose!

1 person can attend all 6 shows; 2 can attend 3 shows — and so on.

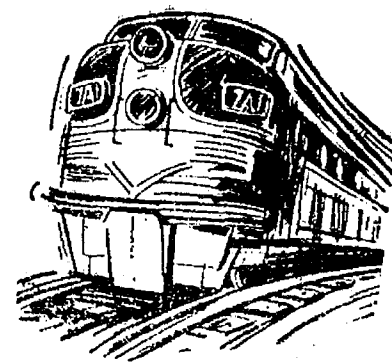
Each admission is punched on your ticket at the door and the ticket is handed back to you until fully used.

★ ★ ★ ★
ALL THESE SHOWS ARE RATED "G"REAT!

★ ★ ★ ★
CALL 475-1301 OR 475-1511 FOR FURTHER INFORMATION!

SATURDAY, MARCH 13th
THAYER SOULE PRESENTS

★ **"RAILROADS ARE FUN"**



SATURDAY, APRIL 3rd
JOE ADAIR PRESENTS

★ **"KENTUCKY-TENNESSEE EXPERIENCE"**



SATURDAY, MAY 1st

DON COOPER PRESENTS

★ **"Trails of the Mountain West"**

KIWANIS EXPECTS AN EARLY SELLOUT OF THIS EXCEPTIONAL SERIES
SAY "YES" WHEN A KIWANIAN CALLS - YOU'LL BE GLAD YOU DID!

See the Arizona desert country, Grand Canyon, Zion and Bryce Canyons, Great Salt Lake, Mt. McKinley, Indian cliff dwellings, New England, Pennsylvania Dutch country, the Smoky Mts., Lookout Mt., Cumberland Falls, Nashville and Opryland — and much, much more in Kiwanis' 15th annual Travel Series.

THIS YEAR - DO IT - TREAT YOURSELF & THE FAMILY TO THE AREA'S TOP ENTERTAINMENT VALUE!

D. Colquhoun Celebrate 50th Anniversary

Mr. and Mrs. David Colquhoun celebrated 50 years of marriage Sunday, Sept. 7 with an afternoon dinner reception at the Chelsea Rod and Gun Club. The reception for 80 guests was given by their son, Cameron and his family, of Jackson.

The couple were married Aug. 29, 1925 in St. Andrew's Church, Sarnia, Canada. They have lived in Chelsea since 1938.

Both Mr. and Mrs. Colquhoun were born in Scotland; however, they made their acquaintance in Detroit where Mrs. Colquhoun had come for a visit and stayed. She added that her parents were in Scotland and unable to attend their wedding. "We had a small reception," Sunday's celebration, she said, was a big affair; her son's idea to really celebrate.

Gold tablecloths and napkins covered the tables and the couple cut into a three-tiered pale yellow wedding cake. "We received many gifts and flowers. It was beautiful," Mrs. Colquhoun remarked.

Mr. and Mrs. Colquhoun have two grandchildren.

Relatives, Friends Greet Gilsons on 50th Anniversary

A beautiful fall day greeted the many guests who attended the 50th wedding anniversary of Mr. and Mrs. Gale Gilson (nee Alice Boyer) Sunday afternoon, Sept. 14.

Hosting the celebration were Mr. and Mrs. Willard Perry of Lake Leelanau and Mr. and Mrs. Robert Butler, Jay and Lois, of Chelsea.

The Chelsea Rod and Gun Club was decorated with gold candles in holders made by Mrs. Butler, bells, flowers and a traditional wedding anniversary cake.

Mrs. Vern Hyatt of Livonia assisted at the gift table; Mrs. LeRoy Archer of Lansing, and Mrs. Roy Greenleaf of Chelsea cut the cake. Mrs. Mac Packard was in charge of the guest book.

Approximately 180 relatives, friends and neighbors from Mulliken, Milford, Charlotte, Grand Lodge, Okemos, Lansing, Edmore, Vermontville, Nashville, Conklin, Homer, Augusta, Hopkins, Plainwell, Battle Creek, Eaton Rapids, Bronson, Ypsilanti, Northville, Ann Arbor, Wayne, Marshall, Fenton, Saline, Flint, Byron, and Chelsea were present.

The Gilsons have lived at 515 East St. for 36 years.

In the quest for success, just remember that there is still reliable substitute for character and service.

Janis K. Hopkins, Rodney Knieper Wed at St. Joseph Catholic Church

Janis Kay Hopkins became the bride of Rodney Paul Knieper at 7 p.m. ceremony held Sept. 8 at St. Joseph's Catholic church, Dexter.

350 guests were present to hear the vows spoken by the couple. The Rev. Fr. Thaddeus Bozanski presided. Kathleen Helm, aunt of the bride, sang "The Lord's Prayer." Anita Helm, cousin of the bride, sang "All I Ask of You."

The former Miss Hopkins is the daughter of Mr. and Mrs. Jay Hopkins of Chelsea. Mr. Knieper is the son of Mr. and Mrs. Al Knieper of Ann Arbor.

For her evening wedding, the bride chose a Victorian styled gown in white nylon organza with a bodice trimmed in seed pearls and rows of chantilly lace which were repeated along the hem and attached chapel-length train. The sleeves and collar were sheer and edged with seed pearls and Venice lace. A short bouffant veil was held in place with a camelot cap of Venice lace and seed pearls. She carried a hand colonial bouquet of white carnations, yellow sweetheart roses, wiburn abby roses accented with baby's breath and pearl hearts.

Attending the bride as maid of honor was Debra Rosback. She wore a princess style apricot polyester crepe gown with beige lace overlays on the bodice. She carried a colonial bouquet of orange wiburn abby roses, yellow sweetheart roses and bronze daisy poms. Other bridesmaids were Dian Grant of Chelsea, Karen Kennedy of Manchester and Carol Clark of Grass Lake. They were gowned identically to the maid of honor and carried similar bouquets.

Mrs. Hopkins chose an aqua floor-length gown of polyester double-knit trimmed with a ruffle at the neckline and sleeves. Mrs. Knieper

wore a green floor-length polyester double-knit with soutache embroidery.

The niece and nephew of the bridegroom, Deana Knieper and James Devine were the flower girl and ring bearer.

Serving the bridegroom as his best man was Arthur Sias of Chelsea. Ushers were Kenneth Knieper of Dexter, Larry Knieper of Ann Arbor, both brothers of the bridegroom, and Larry Hopkins, the bride's brother.

A reception immediately following the ceremony was held at the Fair Service Center. Assisting were Mrs. Don Wollpert, aunt of the bride; Mrs. James Devine, sister of the bridegroom; Mrs. Dean Knieper, and Mrs. Kenneth Knieper, sisters-in-law to the bridegroom and Miss Kathy McCalla who kept the guest book.

The couple will make their home in Big Rapids. The bride is a 1975 Chelsea High school graduate and will attend Ferris State College; her husband is a 1973 graduate of Dexter High school, attends Ferris State college and belongs to Theta Alpha Sigma fraternity.

Telephone Your Club News To 475-1371.

A FAMILY AFFAIR

THE KIDS WILL PROFIT BY THE 6 GREAT NEW SHOWS IN THE COMING TRAVEL SERIES SO WILL YOU!

SEASON TICKET ONLY \$8

Sign Up for Our Needlework Classes

CLASSES BEGIN SEPT. 22

BASIC CROCHET (7 wks.) Tues. afternoons, 1-3, and Thurs. evening, 7-9

Cost \$10

MACRAME (6 wks.) Thurs. morning, 9:30-11:30, supplies included

Cost \$16

NEEDLE POINT (6 wks.) Mon. evening, 7-9, supplies included

Cost \$21

BARGELLO (6 wks.) Wed. morning, 9:30-11:30 and Wed. evening, 7-9, supplies included

Cost \$26

FOR MORE INFORMATION CALL

TAILFEATHER CREATIONS

103 N. Main, Chelsea

Phone 475-2512

Altar Guild Members Elect Officers

St. Mary's Altar Guild elected officers for the 1975-76 year at their September meeting. Elected to the office of president was Sally Kargel, first vice-president, Mildred Eies, second vice-president, Anna Laban, secretary, Kathleen Chapman, and treasurer Marjorie LaRose. Members elected to the executive board are Kathryn Stefan, Shirley Gaken and Nancy Wood. Loretta Doll was elected historian and Ruth Zeeb, parliamentarian.

It was announced that special

cannonization services of mother Elizabeth Seton were held Sept. 14 in Lansing. Mother Seton is the first American to be canonized a Saint.

Betty Crocker coupons, old eye glasses and stamps are needed by several religious groups to fulfill projects, according to Mrs. Wayne Harvey.

The Executive Board will meet Sept. 22 at 7:30 p.m. at the home of Kathleen Chapman. Standing committees will be named at that time.

CARPET REBIRTH

Give your carpet a new lease on life by cleaning it regularly.

JET SPRAY CARPET CLEANING

Use Your BankAmericard Phone 761-3025 or 475-1509 Ask for John Lixey.

ANNOUNCING: Sept. 16 THRU Oct. 4 Carpet Cash rebate!

Merkel announces its unique carpeting cash rebate program beginning with Lees' new multi-color 100% nylon twist and Cabin Craft's solid color 100% nylon saxony twist. Both of these carpets are tightly and densely constructed for long wear under heavy use and heat-set under high temperature and pressure to assure long lasting texture retention. Each is a top quality carpet specially priced at \$11.95 sq. yd. This offer good now through Oct. 4th.

\$50.00 REBATE COUPON

If you purchase between 30 and 40 yards of Lees' multi-color twist carpet or Cabin Craft's solid color saxony twist carpet at \$11.95 yd. Merkel's will give you \$50.00 cash rebate upon installation. Offer expires Oct. 4, 1975.

\$75.00 REBATE COUPON

If you purchase between 41 and 50 yards of Lees' multi-color twist carpet or Cabin Craft's solid color saxony twist carpet at \$11.95 yd. Merkel's will give you \$75.00 cash rebate upon installation. Offer expires Oct. 4, 1975.

\$100.00 REBATE COUPON

If you purchase between 51 and 60 yards of Lees' multi-color twist carpet or Cabin Craft's solid color saxony twist carpet at \$11.95 yd. Merkel's will give you \$100.00 cash rebate upon installation. Offer expires Oct. 4, 1975.

\$125.00 REBATE COUPON

If you purchase between 61 and 70 yards of Lees' multi-color twist carpet or Cabin Craft's solid color saxony twist carpet at \$11.95 yd. Merkel's will give you \$125.00 cash rebate upon installation. Offer expires Oct. 4, 1975.

Merkel

FURNITURE AND CARPET

MAIN STREET IN CHELSEA PHONE 475-8621
CHICAGO BLVD. IN TECUMSEH PHONE (517) 434-2205
OPEN MONDAY AND FRIDAY NIGHTS UNTIL 9:00

PROFESSIONAL DESIGN CONSULTING

Club and Social Activities

BETA SIGMA PHI

Beta Sigma Phi chapter of Xi Gamma Mu met Sept. 9 at the home of Judy Barkley. Ten members and one guest attended. Betty Koch of Soio Church Rd., renewed her membership in the organization.

Fall rushing plans were discussed as well as the Ways and Means project.

Gerry Reith presented her program on "Woman—Her Heritage and Her Hope" by discussing the book "Five for Freedom."

The next meeting will be held Sept. 23 at the home of Lavonda Hayes.

WATERLOO LADIES AID

The Waterloo Village United Methodist church ladies aid met Wednesday Sept. 10 at home of Barbara Beeman for a 1 p.m. dessert luncheon.

The group will meet Oct. 8 for a pot-luck dinner at the home of Shirley Case.

YOUNG HOMEMAKERS

The Young Homemakers picnic was held Sunday, Sept. 14. Eleven families attended. A pot-luck dinner was followed by a game of touch football by members' families.

Next meeting, Sept. 25, will be held at the home of Martha Luick with Arlene Bareis as co-hostess.

Subscribe today to The Standard!

Bredts Honored At Farewell Parties

The H. A. Bredts of Half Moon Lake were honored last week at two separate parties before the family departs for California where they will make their new home.

Last Friday afternoon, Mrs. Helen Bredt was honored by 13 friends and neighbors at a 1 p.m. shrimp soufflet luncheon. Hosting the occasion was Mrs. Nan Nils.

On Sunday the entire Bredt family was honored with a pot-luck and hot dog roast on Half Moon Lake Beach. 50 residents of the Glenbrook area attended to honor the Bredt family. Also celebrated at the picnic was the birthday of Elaine Stahl.

Other news from the area: the Richardson family will leave for a two-week missionary trip to Brazil where Mr. Richardson will be working on construction.

It's a trustful wife who gives her husband some letters to be mailed today.

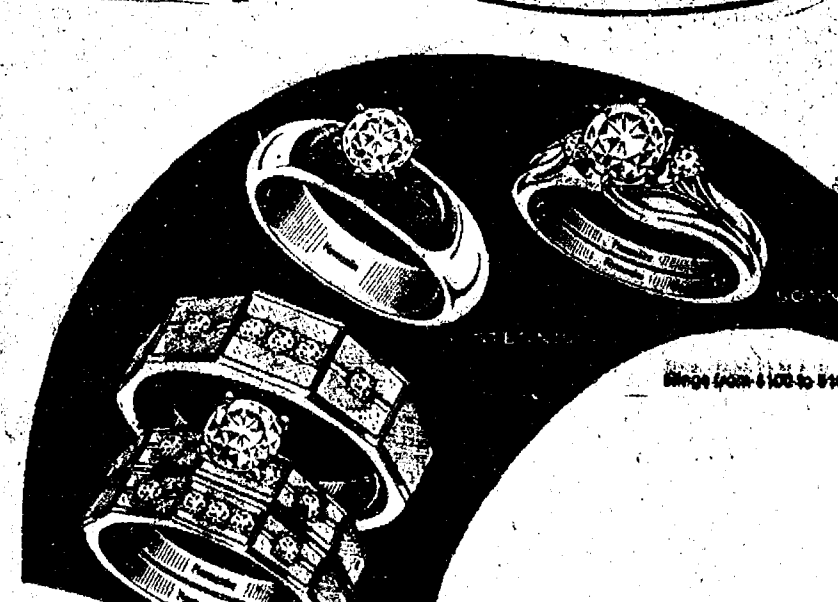
Magic Mirror Beauty Salon

Open Tuesday thru Friday 9 a.m. to 9 p.m.
Saturday, 8 a.m. to 3 p.m.

PHONE 665-0816

Once in a lifetime

Chosen but once to be cherished forever, your engagement ring should be the finest. With Keepsake we offer both perfect quality and fine white color.



WINANS JEWELRY

SPECIAL-ORDER UPHOLSTERY SALE

Prices reduced on floor merchandise and selected special orders.

FRANKLIN
15% - 20% OFF

September is special-order upholstery sale month! Franklin Furniture, our featured upholstery line, has sofas, chairs, sectionals and love seats in Country, Contemporary or Classic styles. As a maker of fine furniture, Franklin is famous!

HENREDON
20% OFF

Henredon means handcrafted beauty and quality. The entire upholstery line is on sale this month. This is an unusual opportunity for all who admire fine furniture. Choose from an array of beautiful fabrics.

CONOVER
SELECTED ITEMS
20% - 25% OFF

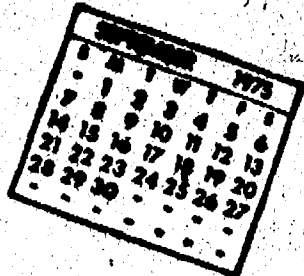
Selected pieces in a special selection of fabrics are on sale now. For Colonial or Classic love seats and sofas it's Conover Chair, that master-maker of better furniture.

Merkel

FURNITURE and CARPET

MAIN STREET IN CHELSEA PHONE 475-8621 • CHICAGO BLVD. IN TECUMSEH PHONE (517) 434-2205
OPEN MONDAY AND FRIDAY NIGHTS UNTIL 9:00 • PROFESSIONAL DESIGN CONSULTING

Community Calendar



Chelsea Child Study Club, Sept. 23 meeting at Chelsea Community Hospital in the dining room at 7:30 p.m. Topic "Cancer in Women." Guests are welcome.

Chelsea Community Fair Board meeting Thursday, Sept. 18, at the Fair Service Center.

All veterans of foreign wars are welcome to attend a membership drive meeting Wednesday, Sept. 24 at 105-B N. Main St., Chelsea Post 4078 VFW. The meeting will begin at 8 p.m.

Washtenaw County bookmobile, sponsored by the Washtenaw County Library will be at the North Lake United Methodist church, 1411 North Territorial, every other Wednesday from 4:25 to 5:10 p.m., beginning April 9.

Pap tests are free for all area women, Tuesday mornings, at St. Joseph Mercy Hospital, Ann Arbor. Call American Cancer Society office, 688-8857 for appointment.

Congressman Bob Carr's Mobile Office Van will be in Chelsea from 12 noon to 1:30 p.m. Monday, Oct. 13; Friday, Nov. 7 and Monday, Dec. 22.

Inquiries regarding the Chelsea blood bank may be directed to Harold Jones in the event that Mrs. Dudley Holmes is unavailable, or to Robert Moyer, American Red Cross in Ann Arbor, 971-5300.

Chelsea Area Historical Society is still taking 1975 annual memberships. Applications for membership may be picked up at McKune Memorial Library, or write Box 334, Chelsea 48118, or telephone 475-7290 for information.

Friends of McKune Memorial Library. A n n u a l membership drive is in progress. Call 475-5326.

Humane Society of Huron Valley has dogs and cats for adoption. Owners may reclaim their lost pets. Phone 662-5585. Open from 9 a.m. to 5 p.m. daily. Sunday, 1 p.m. to 5 p.m. 100 Cherry Hill Rd., quarter-mile south of Plymouth Rd. at Dixboro.

Sylvan Township Board meeting the first Tuesday of the month, at 7 p.m., at Sylvan Township Hall. Tours of Chelsea Community Hospital and surgical center are available for small groups. To arrange for tours, call: Neva Jordan, 426-8027, or Dorothy Miller, 475-8020.

Chelsea Co-op Nursery applications for 1975-76 classes are now being taken. For information, call Jearl Mull, 426-5822 or Leslie Bowers, 475-1401. xadv121f

Chelsea Home Meal Service delivers one hot meal a day to elderly and disabled living in the Chelsea area. For information call 475-8014 or 475-2923.

Senior Citizen Fun Nite every Friday evening at 7:30.

Chelsea Child Study Club Workshop at the home of Mary Jo Miller, Sept. 23 at 9 a.m. Project, "Dough Art."

4-H Busy Two-in-One, Monday, Sept. 22, 7:30 p.m. at the home of Richard Ashley, 604 Madden Rd., Dexter. Arts and Crafts. Any questions phone 426-4157.

Modern Mothers Child Study Club Tuesday, Sept. 23, 8 p.m., at home of Barbara Brown. Husbands are invited. Speakers: Drs. Marshall and Marquette Shearer.

AA and Al-Anon meeting, Monday evenings at Chelsea Hospital, 8:30 p.m. Closed meetings.

Lamaze Association of Ann Arbor is now holding classes at the Chelsea Community Hospital. If interested, call 761-4402, or 475-8316.

American Legion and Auxiliary hospital equipment available by calling Guy Freysinger at 475-1961.

Weekly Tuesday Nite Singles Club, dance, 9 p.m. to midnight, Ann Arbor "Y," with live band.

Administrator...

(Continued from page one)

Johnson received his Master of Hospital Administration from the University of Michigan in 1968. His undergraduate studies were completed in 1966 at the College of Wooster, Wooster, O.

He is associated with the American College of Hospital Administrators, the Hospital Association of New York State, the Michigan Student and Alumni Association, a past president of the Assistant Administrators of Northeastern New York and the Northeastern Hospital Management Engineering Association.

A reception for Johnson will be held Monday, Sept. 22 from 3 to 4:30 p.m. in the Chelsea Community Hospital dining room.

Johnson, his wife and their two children plan to relocate in the Chelsea area.

Golfers Win...

(Continued from page one)

and Dan Shirilla who each shot a 41 and Joe Ewald who shot a 42. The golfers will meet South Lyon and Milan Wednesday, Sept. 17, on the Inverness course for a dual match. Rounds of golf are scheduled to begin promptly at 3:15 p.m.

Brownie Troop Wants Hay Ride Volunteer

Chelsea Brownie Troop 169 is looking for someone with hay and a wagon to give them a ride.

The girls number 15 and could ride Saturday afternoons or Mondays after 3:30 p.m. Troop leaders urge those interested in taking the Brownies for a hay ride to phone Fran at 475-2943 or Lois at 475-7585.

DEATHS

Robert A. Kramer

Former Chelsea Resident Dies in Boston at Age 35

Robert A. Kramer of Concord, Mass., formerly of Chelsea, died suddenly Sept. 15 in Boston, Mass. He was 35 years of age.

He was born Feb. 25, 1940 in Detroit, the son of Thomas and Catherine Kramer. He graduated from Chelsea High school in 1957. After high school he joined the Air Force and served in France. Following his time in the Air Force he was a manufacturers sales representative. He was a member of the K. of C. of Concord, Mass. He was active in the Audubon Society. As a member of the society Mr. Kramer designed a marsh boat used by the Audubon Society to protect the Osprey in northern Michigan.

He is survived by his wife, Chris; two daughters, Kara and Ashley, both at home; his parents, Mr. and Mrs. Thomas Kramer of Salsuma, Ala., formerly of Chelsea; a grandmother, Mrs. Mary Brasza of Troy; three brothers, Thomas of Philadelphia, Pa.; Lawrence of Ann Arbor, and James of Detroit; three sisters, Mrs. Ed (Cathy) Gilin of Seattle, Wash., Mrs. Ronald (Patricia) Balaz of Michigan Center and Miss Diane Kramer of Salsuma, Ala.

Funeral services will be held today, Thursday, Sept. 18 at 4 p.m. at St. Mary Catholic church, Chelsea, where the mass will be celebrated by the Rev. Fr. Philip Dupuis and the Rev. Fr. Wellar of Jackson.

Burial will follow in Mt. Hope Cemetery, Waterloo.

Dr. James D. Shortt

Retired Dentist Dies at United Methodist Home

Dr. James D. Shortt died Sept. 10 at the Chelsea United Methodist Home. He was 88 years of age.

He was born April 18, 1887 in Sugar Grove Pa., the son of Charles and Belle Davis Shortt. Dr. Shortt was a retired dentist. He came to the home Dec. 13, 1971 from Warren, Pa. He is survived by two sons, James D. Shortt, Jr., of Ann Arbor, and Charles B. Shortt of Warren, Pa.

Funeral services were held Saturday, Sept. 13 from the Peterson-Blick Funeral Home of Warren, Pa. Burial followed in Fairview Cemetery Pleasantville, Pa. Local arrangements were by the Staffan Funeral Home.

Anthony Jurecki

Native of Poland Dies at Chelsea Community Hospital

Anthony Jurecki of 7250 Lamb Rd. Manchester died Saturday at Chelsea Community Hospital. He was 85.

He was born Dec. 5, 1889 in Poland and had lived and farmed in the Chelsea and Manchester area since 1931.

He was married to Agnes Matyszyk who preceded him in death in 1954.

He was a member of St. Mary's Catholic church and the Polish Roman Catholic Union of America. He is survived by three daughters, Mrs. Erwin (Sophia) Paul, Mrs. Lehman (Helen) Wahl and Mrs. Joseph (Veronica) Kastl, all of Manchester; eight grandchildren and 12 great-grandchildren.

He was preceded in death by a daughter, Rose Jakufiec in 1964. Funeral services were held Wednesday, Sept. 17, at 10 a.m. at St. Mary's church. The Rev. Fr. Lewis officiated. Burial followed in St. Mary's Cemetery. Bible Vigil was held Tuesday at 8 p.m. at the Jenter Funeral Home, Manchester.

DEATHS

A daughter, Amy Karen Sept. 9 at St. Joseph Mercy Hospital in Ann Arbor to Mr. and Mrs. Duane Warren of 705 W. Middle. Maternal grandparents are Mr. and Mrs. Paul Flak of Rockford. Paternal grandparents, Mr. and Mrs. Marshall Warren of DeWitt.

A son, Paul David, Sept. 10 at St. Joseph Mercy Hospital, Ann Arbor, to Mr. and Mrs. David L. Johnston of 18187 Spears Rd., Gregory. Maternal grandparents are Mrs. Lyda Penhallegon and the late Albert S. Penhallegon of Chelsea. Paternal grandparents the late Mr. and Mrs. Clarence Johnston.

WIVES MISSING

Spanish Fork, U.—It took police officer Howard Babriskie 13 miles to catch and tell two unidentified Salt Lake City men they had left their wives behind. One exclaimed: "By golly, where are they?" The husbands learned their wives had gotten out of the car when they stopped for information.

BELIEVE IT OR NOT!

The price of a season ticket to all 6 Kiwanis Travelogues in the 1975-76 series is only \$8.00!



TRUCKLOAD FURNITURE SALE

SAVE UP TO 40%

31 BIG HOURS

8:30 a.m. to 5:30 Thurs. and Sat.
8:30 a.m. to 9:00 Fri.

CHARGE IT!

Terms available on our Family Purchase Plan.

FREE COFFEE!

Have some donuts and coffee while you shop.

PRIZE DOOR

Drawing Sat. You need not be present to win!



COLONIAL

SWIVEL ROCKERS IN TWO STYLES

REG. 99.95

SAVE 31.95

Carefully tailored Traditional plush velvet or-Herculon® tweed Colonial with Salem maple trim.

63-33067

TRUCK LOAD PRICE

\$68

SUPER SAVING



Traditional

Early American

Modern

3 SOFA STYLES... YOUR CHOICE

Elegant sofas in Scotch-gard® treated velvet, Herculon® olefin or leather-look vinyl. All with reversible Stylofoam cushions for double service. 53-658,295,428

\$378

REG. \$449.95



ROOM-SIZE REMNANTS
\$48 9x12 Foot \$88 12x15 Foot

Giant savings on plushes, shags, hi-lo's and level loop remnants. Hurry! 61-76478



SAVE \$145

7-PC. MASSIVE PINE GROUP—REG. \$699

You get sofa, chair, cocktail table, 2 end tables and 2 lamps. Warm pine finish. Nylon covers.

\$554

53-603

Chromcraft



SAVE TO 61.95

5-PC. OVAL DINETTE

Table top 48", opens to 72". New wrap-over chair backs. Brownstone steel frames. 59-1882,84

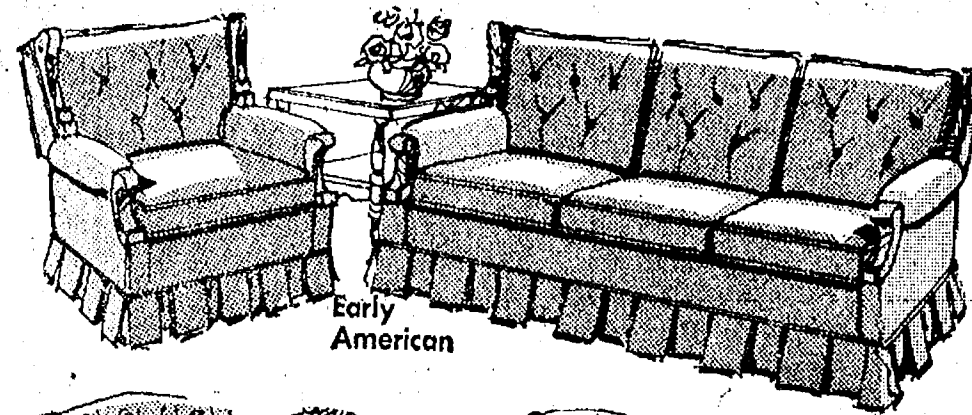
\$178

REG. 234.95

7-Pc. Dinette

\$228

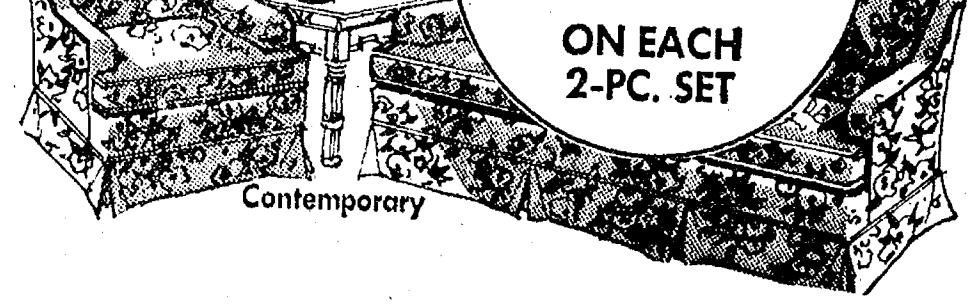
REG. 289.95



Early American



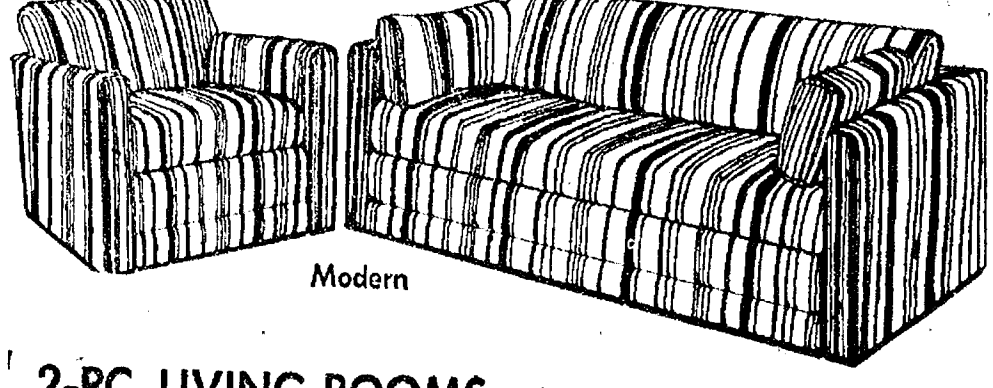
Traditional



Contemporary

SAVE \$71.95

ON EACH 2-PC. SET



Modern

2-PC. LIVING ROOMS—YOUR CHOICE

Complete your living room with luxuriously styled matching sofa and chair sets. Choose from popular fabrics, colors, distinctive patterns. Stylofoam reversible cushions. 53-429, ETC.

\$378

REG. \$449.95

DECORATOR LAMPS

\$28.88

REG. \$44.95

We're Excited About This One!



SHOWERMATE'S TUBKIT

Once in a blue moon a new home-owner product comes along that we KNOW is SPECIAL — Something that's been needed — that solves a common problem in a new, exciting way...

TUBKIT IS ONE OF THESE RARE PRODUCTS

5 simple pieces of moulded acrylic enclose your tub-shower area easily, beautifully, permanently (no mouldings, no specific tools needed).

IN TRAVERTINE, MARBLE OR ONYX

\$59.95

Take a look at a winner!
CHELSEA LUMBER

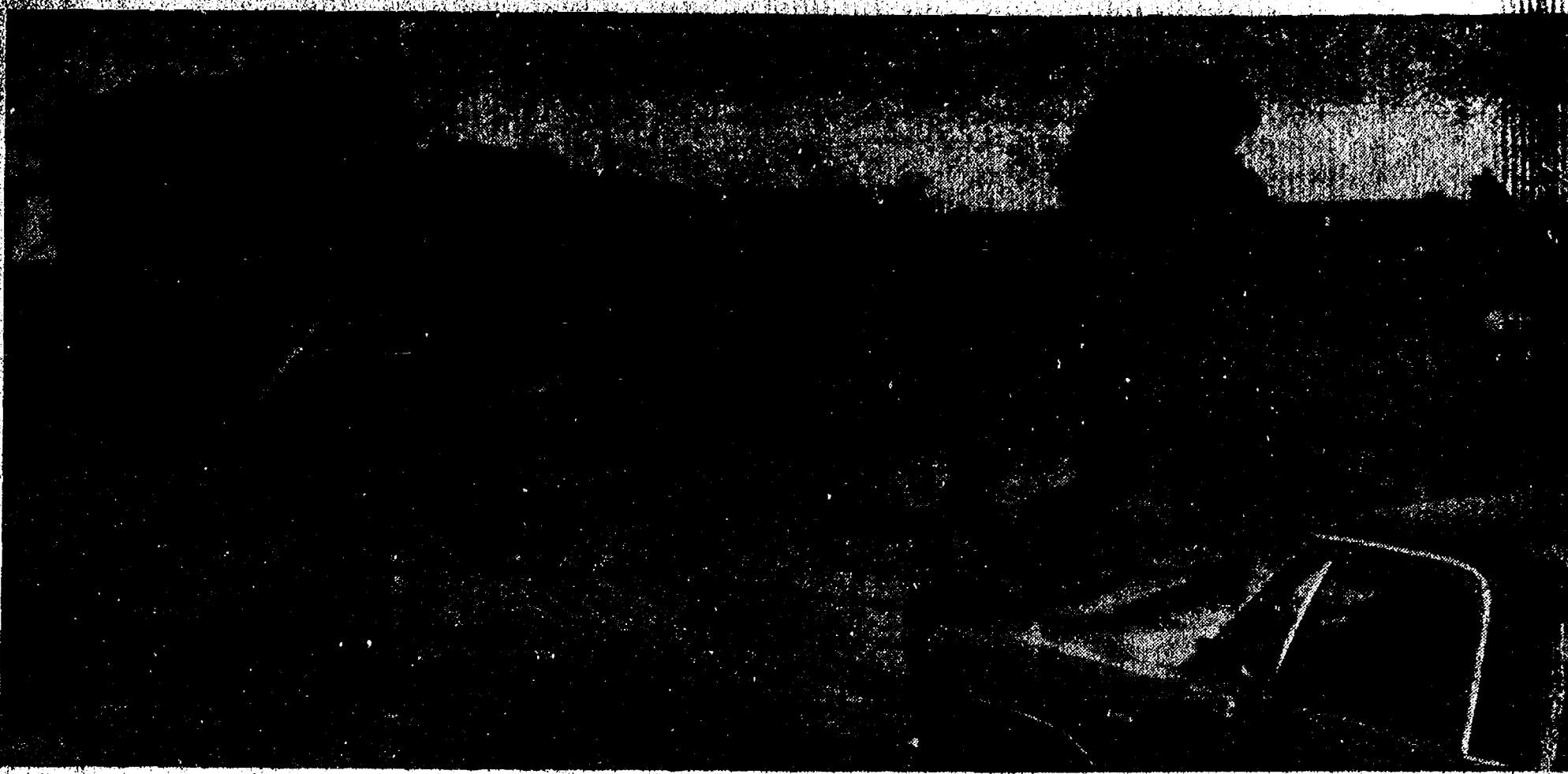
GO



Chelsea for Truckload Savings

SEPT. 18, 19, 20

CHELSEA, MICHIGAN, THURSDAY, SEPTEMBER 18, 1975



SCHOOL BUS SERVICE BUILDING: Ralph Brier (left) and Art Six, field superintendent for Construction Co-Ordinators (right) look over the blueprints for the building which will become a bus storage and repair center. Brier says the facility is almost complete, with 40 percent of the work done. He added that the black-

topping of the parking area, the fencing of the lot and the traffic approach should be complete in two weeks. Prior to the building of this facility school buses were parked in the high school parking lot, and very often subject to vandalism.

JV Gridders Lose, 6-0, To Tecumseh

Chelsea's JV football team suffered their first defeat of the 1975 season last Thursday evening when they met Tecumseh. The Indians' score was 6; Chelsea 0.

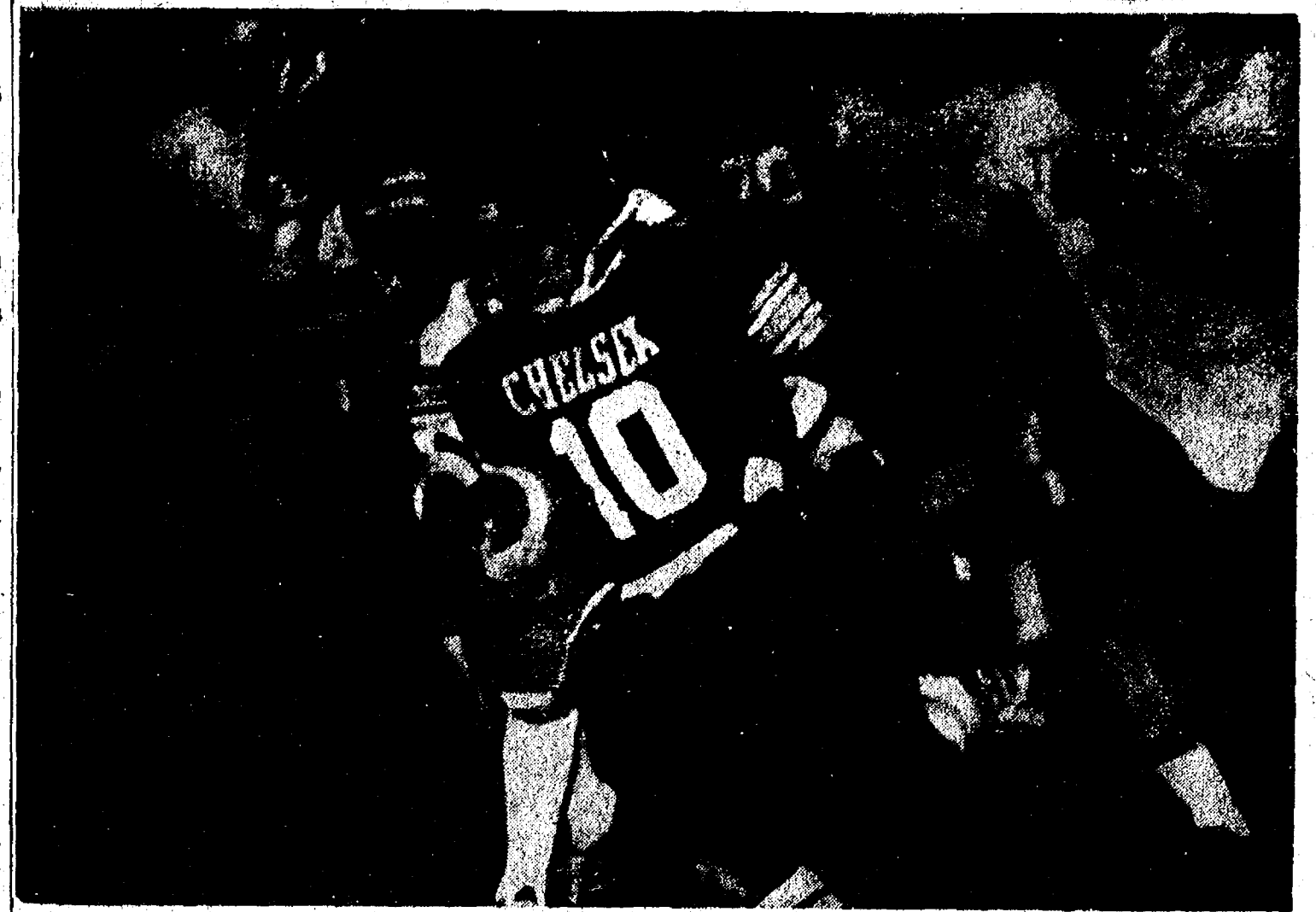
According to Coach Jon Schaffner, Tecumseh got away on a quick pitch around right end in the first quarter for 26 yards to the one-yard line. The Indians then punched it in for a touchdown on a quarterback sneak. However, their extra point attempt was sopped short.

Schaffner said, "The defense was tremendous except for one play which set up the touchdown. Even with that 26-yarder, Tecumseh only totalled 52 yards total offense all night."

Jason Lindauer led the defense with eight tackles, followed by Steve Pennington and Todd Weber who had seven each, Mike Young, six, and Dave Schrotenboer, five; Matt Bolinger and Vic Verchereau, four; Rocky Brandel, Don Harris, and Matt McClear with three each. Fumbles were recovered by Jason Lindauer, Jeff Powell and Todd Weber.

Schaffner continued, "It was a weird game as we outgained Tecumseh in yardage, 155 to 52, and we also had another 70 yards called back because of penalties. The first string fullback was kicked by his own teammate and only played part of the first quarter. The first string quarterback stumbled on a long flight of steps coming out for the second quarter and sprained his ankle, preventing him from further play."

This week the Bulldogs will meet Lincoln at 7 p.m. Thursday.



QUICK PITCH: Reserve halfback John Toon runs for 16 yards on a quick pitch left in the fourth quarter of play against Tecumseh last Friday. John, a junior on the team, is one of Chelsea's speediest backs.



TOUGH GOING: Chelsea's blockers, Don Sullivan (79), Jim Boyer (86), Howard Sawyer (32) and their first game of the season 26-13. Robards finish John Collins (35) find it tough blocking for full-back Tony Robards on a dive play last Friday.

Girls Varsity Cagers Drop First Game

The 1975 Chelsea High school girls varsity basketball team last their 1975 season's opening game to Grass Lake, 14-43.

Practice began for the 13 team members Aug. 18. The girls have a 14-game schedule this year with South Lyon still to be added to it. League teams participating in girls' basketball this year will be Chelsea, Dexter, Brighton, Saline, Novi, Lincoln and South Lyon (participating for the first time this year). Milan will have a team next year.

Returning letter winners for Chelsea's team this year are Mickey Bridges, Alice Juergens, Karen Tobin, Sue Schulze and Karin Roskowski. With these five letter winners are Teresa Buza, Karen Keiser, Kim Moore, Teri Lutovsky, Edie Houk, Kyle Parker, Sharon Donovan and Jolande Koole (an exchange student from Holland), all working to improve their performances before Thursday's game with Manchester.

Girls JV Cagers Win Opener Over Grass Lake

Chelsea girls' Junior Varsity basketball team opened their 1975 season Wednesday, Sept. 10 with a fine 31-17 win over Grass Lake. Leading scorers were Sue Heydlauff with 8 points; Penny Collinsworth 7, and Shelley Warren with 5.

Other scorers included Lori Miles, Joan Lutovsky, Veronica Satterthwaite, Tracy Hawker, Gail Hume, and Linda Breza.

"This year's team has a lot of height and they are very quick offensively and defensively," said J. V. coach Cindy Bradbury. Their defensive ability held Grass Lake to two points in the first half. The offensive game picked up in the second half to add 26 points to our score," she continued. The team

has good depth with 17 players who all contributed to the victory. Returning sophomores are Linda Breza, Penny Collinsworth, Sue Heydlauff, Gail Hume, Nancy Knott and Joan Lutovsky. Rounding out the squad are sophomores Tracy Hawker and Shelley Warren and freshmen Tammy Collinsworth, Sheryl Kiel, Jackie Lamb, Lori Miles, Brenda Nugent, Veronica Satterthwaite, Maureen Tobin, Lisa Weber, and Cindy Welshans.

The next game is at Stockbridge tonight (Thursday). All home games are played at 6:30 p.m. with the varsity game immediately following. "The girls have been working hard since Aug. 18 and I have a lot of confidence they will show the fans and the opposition some good basketball," coach Bradbury remarked.

Average citizen: One who isn't afraid to bowl out the President, but is always polite to a policeman.

1975 Cross Country Schedule

Thursday, Sept. 18—Novi*	Home
Saturday, Sept. 20—Olivet Invitational	
Thursday, Sept. 25—Brighton*	Home
Thursday, Oct. 2—South Lyon*	Away
Tuesday, Oct. 7—Jackson Northwest	Away
Thursday, Oct. 9—Milan*	Home
Saturday, Oct. 11—Mason Invitational	
Tuesday, Oct. 14—Dexter*	Away
Thursday, Oct. 16—Saline*	Home
Saturday, Oct. 18—Manchester Invitational	
Wednesday, Oct. 22—League Meet.	
Saturday, Oct. 25—Regional Meet.	
Saturday, Nov. 1—State Meet.	

*Conference Meets.

All home dual meets start at 4:30 at Inverness Country Club.

ACT Test Registration Forms Available

Chelsea High school counselor George Bergman reminds college bound seniors who hope to qualify for the State of Michigan competitive scholarships that they must have taken ACT tests to qualify as candidates.

Bergman said that seniors who have not taken the test may still do so. Registration forms may be picked up in counselor's offices. All forms must be mailed no later than Sept. 22.

Telephone: Your Club News To 475-1371.

Hockey Club Members Play Big Barn Sale

A barn sale sponsored by the Chelsea High school Hockey Club will be held Oct. 11 at the 13501 Trinkle Rd. residence of Jerry Quackenbush.

Among the items offered for sale will be antiques, furniture, canning lids, sporting goods and miscellaneous items.

All hockey families and others who wish to contribute to the sale should contact the Quackenbush residence, Vincent Burg or Jerry Ringe evenings after 6 p.m. for pick-up.

Stolen Auto Recovered By Chelsea Police

A stolen auto belonging to Joseph C. Weber, Jr., of Dexter, was recovered by Chelsea police Sept. 15 while on routine patrol in the downtown area. Chelsea officers noticed that a 1968 Plymouth had been parked in the lot behind Heydlauff's store for more than 48 consecutive hours. A LEIN check on the license plates showed that the car had been reported stolen.

The car was open. Two hubcaps were found in the rear seat. There was no damage to the vehicle and the keys were not within.

The vehicle has been released to its owner.

CERAMICS by JUDY
Fall Classes Beginning
Please Phone 475-8369

RICK'S MARKET

Just North of Chelsea on M-52 "The Friendly Store" Phone 475-2898

RICK'S BAKERY SPECIAL

REAL FRUIT! RASPBERRY OR BLUEBERRY
COFFEE CAKES Dee-Licious **99¢**

Saturday and Sunday Only. Made right in our in-store bakery!

VLASIC
POLISH STYLE SPEARS 24-Oz. Jar **79¢**

WISHBONE
THOUSAND ISLAND DRESSING 8-Oz. Bottle **49¢**

SWISS CHALET COUNTRY STYLE
SALAD CRISPENS . . . 2 1/2-Oz. Tin **55¢**

GREEN GIANT
CORN, Whole Kernel . 3 17-Oz. Cans **\$1**

DEL MONTE
WHOLE GREEN BEANS 16-Oz. Can **39¢**

POST
ALPHABITS CEREAL . 13-Oz. Box **79¢**

25-LB. BAG
PURINA DOG CHOW . . . **\$4.99**

NEW FROM VIVA! 123-CT. 2-PLY ROLL
FIESTA PAPER TOWELS . **52¢**

YEAR-AFTER-YEAR

The best in the business
at your doorstep

in the Kiwanis Travel Series
6-ADMISSION TICKET ONLY \$8.00

HUNTER'S SUPPLIES

- ★ Ammunition
- ★ Guns
- ★ Gun Cases
- ★ Gun Cleaning Kits
- ★ Hunting Licenses
- ★ Game Coats, Vests, Pants
- ★ Duck, Geese, Squirrel Calls
- ★ Gloves, Sox, Hats

CHELSEA HARDWARE

Your PRO Store
110 S. Main St. Ph. 475-1121



Friday & Saturday Only

10% OFF

ON ALL MEN'S DRESS SLACKS
(BRAND NAME)

Apparel for the Entire Family

DANCER'S
Chelsea's Friendly Dept. Store

WANT ADS

- YOUNG -

We list and sell lake, country and town properties. Eugene Young, Real Estate & Builder, 878-3792, 11506 Dexter-Pinckney Rd., Pinckney 48169. x34tf

TRENCHING

Water line or electric
Phone 475-7978

Lakes Dug
Bulldozing

- FREE ESTIMATES -
Phone 475-8121

or
475-7959

After 5 p.m.

COMPLETE ALUMINUM SERVICE

Siding - Awnings - Repairs
Gutters - Storm Windows
Remodeling

Free Estimates
Call 475-9209

Camelot Construction
Chelsea, Mich. x12tf

CUSTOM BUILDING

LICENSED & INSURED
FREE ESTIMATES

TOTAL CONSTRUCTION SERVICES

- Residential, commercial and industrial
- Garages
- Remodeling - Additions
- Aluminum Siding
- Roofing
- Trenching

SLOCUM CONTRACTORS & BUILDERS

Serving Washtenaw County
For Over 20 years
20700 OLD US-12
CHELSEA
Phone 475-8321 or 475-7611

WAITRESS

and
WAITER WANTED

Applications now being taken to replace people going back to school. Full-time or part-time. Please apply in person.

Wolverine Bar
Old US-12 at M-52, Chelsea x14

WANT ADS

FOR REAL DOLLAR SAVINGS be sure and see us before you buy any new or used car. Palmer Motor Sales, Inc. Your Ford Dealer for over 60 years. 2tf

FOR SALE - Indian cents, postcards, books, foreign coins, Australian opals, and other articles. Lawrence E. Guinan, 1571 Sugar Loaf Lake. Call 475-2317. x37tf

WEDDING STATIONERY - Prospective brides are invited to see our complete line of invitations and accessories. The Chelsea Standard. Ph. 475-1371. 8tf

Complete Body Repair Service

Bumping - Painting
Windshield and Side Glass Replacement

Free Pick-up & Delivery
Open Monday Until 9

CONTACT DON KNOLL
FOR FREE ESTIMATE

Village

Motor Sales, Inc.
IMPERIAL - CHRYSLER
DODGE - PLYMOUTH
Phone 475-8661

1185 Manchester Rd., Chelsea
Hours: 8 a.m. to 6 p.m.
Tues. thru Fri. Until 9 Monday.
9 a.m. to 1 p.m. Saturday x40tf

GUTTERS

SEAMLESS aluminum eaves-troughs. Installed. White and brown. Call Wilson Metal Shop, Manchester, 428-8468. x8tf

McCulloch

Portable Generators
Chain Saws
WE SELL, SERVICE,
SHARPEN AND TRADE.

Chelsea Hardware

VACUUM CLEANERS

Authorized Electrolux
sales and service.

James Cox

428-2931, or 428-8888
118 Riverside Dr., Manchester 48tf

CONSTRUCTION TRAINEE - No experience needed, we train. Excellent salary and benefits. Guaranteed job training for only 3-year enlistment with the U. S. Army. Call 665-3731 for appointment to day. 21

Owner Says Sell!

4-ROOM RANCH, 2 bedrooms. Nice lot, 60'x171'. Only \$10,600. Make an offer.

Burke Fitzgerald

Office 475-8681 - Res. 878-6603
Representing

Frisinger Realtors

FOR SALE - Chrysler 1968 4-door hardtop. Full power and air conditioning. Ph. 428-4982 or 475-2742. x15

WANT ADS

NOV

Full Time
Complete
Body Shop
Service

Stop in For An Estimate

PALMER FORD

222 S. Main St.
475-1301 27tf

PIANO TUNING, Chelsea and area. Facilities for reconditioning and rebuilding. Used piano sales; reconditioned grands and verticals. E. Ecklund. 428-4429. x50tf

SEE US for transit mixed concrete. Klump Bros. Gravel Co. Phone Chelsea 475-2530, 4220 Loveland Rd., Grass Lake, Mich. x40tf

TRAVEL TRAILERS - 13-ft. and up; 10x65 ft. trailers. John R. Jones Trailer Sales, Gregory, Mich. Phone 498-2655. 43tf

ELECTRICAL WIRING of all types New and rewiring. Ph. 428-4855. x20tf

FOR RENT - American Legion Hall. \$50. Call 475-1824. 40tf

WILLIAMSON HEATING and Cooling, sheet metal work. Licensed and insured. Steele & Son, (313) 475-2022 or (517) 596-2951. 42tf

Automotive Rust Proofing Cars and Trucks

Village
Motor Sales, Inc.
IMPERIAL - CHRYSLER
DODGE - PLYMOUTH
Phone 475-8661

1185 Manchester Rd., Chelsea
Hours: 8 a.m. to 6 p.m.
Tues. thru Fri. Until 9 Monday.
9 a.m. to 1 p.m. Saturday. 21tf

CHELSEA - 3-bedroom Ranch, 2 baths, sunken living room, family room with bar; located on Howard Rd. \$49,900. For an appointment call 475-7843. 51tf

10% DISCOUNT - On all items thru Sept. at Bel-Mar Antique Glass Shoppe. Open week-ends or by appointment. Call Unadilla 1-498-2788 after 6:00 p.m. on weekdays for appointment/directions. x15

NO HUNTING SIGNS

Now available

at the

Chelsea Standard

MANCHESTER AREA

OLDER BRICK HOME - In a nice area of Manchester, 4 bedrooms, 1 1/2 baths, carpeting and drapes, full basement and 2-car garage. Nice yard, close to schools and downtown area. \$44,500.

3-BEDROOM Cape Cod - Maintenance free, situated on a generous 2 acres just outside Manchester. Dining room, family room, and full basement. Completely carpeted. Attached 2 1/2-car garage. Beautiful setting. \$56,900.

ALMOST NEW - Custom built 3-bedroom home with family room and attached 2-car garage. Five acres and 30'x40' barn included. Ideal for horses. Edge of Manchester. \$51,900.

ATTRACTIVE 2-BEDROOM RANCH with access to Pleasant Lake. Heated enclosed porch area, nice winter and summer. Attached 2 1/2-car garage. Generous lot. 15 minutes to Ann Arbor. \$33,900.

MAINTENANCE FREE - 3-bedroom home in the Village of Manchester. Completely remodeled with quality materials and ready to move into. Garage and 10'x15' building, all on a nice lot. \$34,750.

OLDER HOME - With 8 bedrooms on 5 acres just 3 miles north of Clinton. Above ground swimming pool plus two barns included. Many possibilities for kids and horses. \$42,500.

3-BEDROOM RANCH in Manchester. 1 1/2 baths, dining room, family room, full basement, and garage. Convenient home, one year old. \$45,900.

9 ACRES plus a 3-bedroom ranch in the Manchester school area. Living room with fireplace, family room with fireplace, rec room, first floor laundry, walk-out lower level, and attached 2 1/2-car garage. Semi-private lake in back for fishing and swimming. More acreage available with barn. \$73,900.

REAL CLASS & CHARM are reflected in this lovely 4-bedroom home in Manchester. Study, 1 1/2 baths, dining room, family room, fireplace, full basement, and 2-car garage. Large patio and enclosed porch. Excellent area.

Jim Mann 428-8074
Ellis Pratt 428-8562

Spear & Assoc., Inc.
REALTORS
Manchester - 428-8388 14

FOR SALE - 1972 Ford Gran Torino, p.s., p.b., a.c., and set of snow tires. Call 498-2696 after 5 p.m. x14

WANT ADS

SEAMLESS ALUMINUM eaves-troughs, roofing, siding, and carpentry work of all kinds. Experienced installers. All work guaranteed. For free estimate, call R. D. Kleinschmidt Co., 428-8836. x31tf

KETO USED CARS

8020 GRAND - DEXTER
426-4535
CARS BOUGHT AND SOLD x38tf

A fine selection of

New and Used Cars

for immediate delivery

Harper Pontiac Sales & Service

475-1306
Evenings, 475-1608

MUNITH AUCTION - 100 Main St., Munith, Mich. Auction every Sunday, 6 p.m. Danny Fleming, auctioneer. x12tf

HAY FOR SALE - \$1.25 per bale. Ph. 475-1531. 13

STOCKBRIDGE, 13 acres, commercial, on M-52. (517) 851-8144, 35tf

D&G Allen Excavating

Septic Tanks and Drainfields
Back Hoe and Dozing
Sand, Gravel and Topsoil Hauled
Phone (517) 851-8396
or (517) 851-8278 43tf

BRICK MASON - Brick work, block work, fireplaces, chimney repairs, homes and additions. Ph. 475-2584. x44tf

1965 OLDS 98 - Air cond., power windows, p.s., p.b., electric seat, good tires, plus snow tires. \$200 or best offer. Ph. 682-0524. x3tf

WANTED - Interior-exterior painting, \$5.50 per hr. or by job. Guarantee all work. Ph. 971-5751. x50tf

PAINTING - Exterior and interior. Quality workmanship. Free estimates, references, reasonable rates. Ph. (517) 851-7055. x48tf

FOR REMODELING, roofing, pole barns, call Dan Hughes, 924-9350. 42tf

THIRD ANNUAL Chelsea Firemen's Ball, Saturday, Oct. 4. Tickets available by calling: 475-2965, 475-7582, or 475-7319. 16

TRAP SHOOT

at the
Chelsea
Rod & Gun Club

Trap Range

9 a.m. to 1 p.m.
Every Sunday
Will open at special times for clubs and organizations.

Public Welcome

MODERN OFFICE SPACE in Chelsea, on M-52 for lease. 400-565 sq. ft. Call Real Estate One at 475-8693. 14

ALBER FARMS

ORCHARD - CIDER MILL
Member Michigan Certified Farm Markets
Now picking McIntosh - Pippin - Connell Reds - Cortland
Sweet Cider - Whiskey Barrels - New Kegs - Misc. Items
Open Daily 9 a.m. to 6 p.m.
13011 Bethel Church Road
Manchester - 428-7758 x20

3-FAMILY GARAGE SALE - Sat. and Sun., Sept. 27-28. Snowblower, clothes, baby's and children's clothes, etc. 530 S. Freer Rd. x15

BABYSITTING done in my home. Nights preferred. Ph. 475-9353. x13tf

GARAGE SALE - Poker table, captain's chairs, bar stools, bike, electric trimmer, party dresses, women's sz. 12), misc. items. Sept. 20-21, 9 to 6. 11951 Trinkle Rd. x14

GARAGE SALE - 1007 Fahrner Rd. Sylvan Court, Friday and Saturday, Sept. 19-20, 9 to 5. Sewing machine, chairs, tables, lamps, dishes, Xmas decorations, odds and ends. x14

GARAGE SALE - Houseplants, clothing, small appliances and many household items. Friday and Saturday, Sept. 19 and 20. 784 S. Main, 9 to 5. 14

CARPENTERING REMODELING

ALUMINUM SIDING - KITCHENS PATIOS - GARAGES
PHONE 475-7474
CHARLES ROMINE
Licensed Contractor
18027 Old US-12
Chelsea

WANT ADS

NEED A ROOF? Call Toth Building & Remodeling, (313) 498-2178. x41tf

CAR & TRUCK LEASING. For do to call see Lyle Christwell at Palmer Motor Sales. 475-1301. 49tf

BUILDERS - House and barn roofing, all types of roof repair, aluminum storm windows and doors, aluminum siding and gutters, awnings, porch enclosures, garage and room additions, cement work. Call Joe Hayes for free estimates. Manchester 478-4520. x18tf

MANAGERS NEEDED to replace managers who won't work. Send summary of interest and experience. A & N Associates, P.O. Box 41, Chelsea. x46tf

Old Orchard Furniture Refinishing

ANTQUES RESTORED
Old finish removed from wood or metal safely and economically.
513 Old Orchard
Stockbridge, Michigan 49285
(517) 851-8713 10tf

IN CHELSEA - Small, 2nd-floor furnished apartment. Heat furnished. For married couples only. Ph. 475-8469 or 475-2018. 12tf

FOR RENT - Year around cottage, Cavanaugh Lake, for married couple only. Ph. 475-9469 or 475-2018. 12tf

ANN ARBOR - THE ANTIQUES MARKET, Sun., Sept. 21, 5055 Saline-Ann Arbor Rd., Exit 175 off I-94, south 3 miles to the next ANTIQUES MARKET in the nation where all items are screened to warrant a full money-back guarantee by the 180 quality dealers or the master dealer. FEATURING: (A-2) FIREARM, C. 1875, Pa. (A-6, A-11, F-7) GLASS, INCL. SANDWICH, FLINT & PATTERN; (A-11) tops, salt, sugar & syrup, bring pcs. for good fit, also pattern glass lids; (A-15) HUTCH orig. paint & utensil hooks, CHERRY hanging cupboard, bowback Windsor in old red, kitchen Windsor collection early IRON; (A-18) HEPPLEWHITE cherry candle stand, sm 4-draw pine chest with sponge dec old red; sgnd mustard dec arrowback Windsor, cherry HEPPLEWHITE Pembroke table, PA pine, hutch table, Windsor, stick spatter, spatterware incl. 6 material, ing peafowl cup & saucers, PEWTER, CHALK DOGS; (C-3) Currier & Ives; (A-38) Rare SHERATON CHILD'S CRIB, walnut c. 1810, continuous arm Windsor; (B-24) Maple BUTTERFLY table, 18c Eng. gong table & lowboy, QA lift-top table & side chair, cherry Pembroke table, cherry drop leaf with scrub top, MAPLE candle-stand, bucket bench; (C-3) wicker pcs; pine dough box, pr. tiger maple chairs, dental cabinet, 5 carved teak stands, sgnd scenic lamps, brass andel with sgnd Queen Elizabeth shades; (C-14) Mason's wash bowl & pitcher, miniature Gaudy Ironstone, DAVENPORT dessert service; SHEFFIELD tea urn, CANTON, BLUE & WHITE EXPORT CHINA; (C-30) COLLECTION CUT GLASS, MAJOLICA; STAFFORDSHIRE; (D-34) CLOCKS & TRUNKS; (F-34) COLLECTION LAMPS, hanging, Victorian, H.P., hall, banquet, parlor, brass incl. Miller and Rayo, pattern glass, bracket, GWTW; (F-35) METRO DETROIT ANTIQUE BOTTLE CLUB-collectible bottles, medicines, cures, remedies, poisons, beer, whiskey, wine, soda, bottles, perfume, barbers, decanters, stoneware; (F-15) 6 sets French doors with beveled glass also single doors; (F-42) CONSIGNMENT BOOTH - Bring your antiques to be sold, limit 3 items; a.m.-5 p.m., come early. Admission \$1.00. x14

FOR SALE - White portable sewing machine used very little; also table lamps, buffet and other articles. 475-2471. x14

SQUARE DANCE LESSONS - First lesson free, Sept. 21, 7 to 9:30, Lyndon Township Hall, N. Territorial near M-52. Wendell Abbott, caller. For information call 498-2258. x16

MOVING SALE - 7095 Lingane Rd., Chelsea. First house west of Rod & Gun Club, Fri., Sat., Sun., Sept. 19-20-21, 10 a.m. to 3 p.m. Furniture, men's and women's clothing, games, jigsaw puzzles, books, and misc. items. Come and see for yourself. x14

WATCH WORD OF LIFE - Channel 20, 10 p.m. Sundays. The wages of sin is death. Jesus saves. x14

FOR SALE - Wooden trusses, solid oak, full 2x4 or 2x6 for barns, from 20-24 ft. wide, \$5 each. Cages, steel for rabbits or small animals in batteries of 3 to 10, \$2, \$3, and \$4 each. Ph. 428-4592. x14

FOR SALE - Cabbage by the bushel. Ph. 428-3621. x14

FOR SALE - 1978-15 tires; Browning 12 gauge auto; shot gun, \$225; 30-6 Remington rifle, \$225; four 6-hole Chevy rims for truck. Ph. 475-8809, Albert Wiscup. x14

GARAGE SALE - Saturday, Sunday, Sept. 27-28, all day. Furniture, clothing, dishes, many other miscellaneous items. 1225 Kernwood Dr., Chelsea. x15

FOR SALE - Beautifully carved Fisher upright piano. \$400 or best offer. Gibson A.C. acoustic guitars, \$900, worth much more. Hand-made oak and mahogany dresser with beveled mirror made in 1880's, \$175. Lovely old vanity and chair, \$100. Must see to appreciate these items. Ph. 475-7808. 14

LOST - Young German Shepherd dog, mostly black. Reward for "Pacer's" return. Ph. 475-2946. x14

FOR SALE - Ear corn, Sylvester Weber. Ph. 475-7871, 20790 Selo Church Rd. 14

NOTICE - To whom it may concern: we concede that Ger and Al are the better bridge players, that we were wrong to double the bid, and that we were foolish to bet we could win. Humbly, Little John and Nan. x14

WANT ADS

REDUCE excess fluids with Fluidex. Lose weight with Der-a-Diet capsules. Chelsea Pharmacy. x18

'72 KAWASAKI 750-100 h.p., all fiberglass, Wurgas, alloy wheels, dual disc, very quick! 428-3188 after 4 p.m. x8tf

CHILD CARE available during the day. By day or week. Facilities for any age child. Ph. 475-8353. x10tf

'72 OLDS - 4-door 98 Regency. Low mileage, all power, new tires, exhaust and battery. 475-7895 or 475-2030. 10tf

FOR SALE by owner - Victorian home in village limits. Ideal location close to Chelsea schools. 2 or 3 bedrooms, large living room with fireplace. \$28,500. For appointment call 475-8222. 10tf

PIANO RENTALS - Al Nalli Music. Ph. 475-7215. x14

WANTED - 1 h.p. or larger electric motor. Ph. 475-8310. x13tf

REAL ESTATE

38-ACRE FARM northeast part of Jackson County, 38 acres tillable, electric fences, 3-bedroom farm home, 2-car garage, large barn, workshop. \$40,000.

23 ACRES in Waterloo Recreation Area, west of Big Portage Lake, Jackson county. Land contract available, \$13,000.

KIRA HENRY REAL ESTATE

(517) 764-1416 anytime 14

FOR SALE - 2 pr. tap shoes, excellent condition, sizes 7N and 8 1/2N; girls size 14 brown winter coat, boot style, like new; 28" lawn sweeper, very good condition. Ph. 475-2509. x14

IRONING WANTED - 316 East St. Ph. 475-8923. x15

BABYSITTING in my home, 2 blocks from South school. Molly (Foster) Grissom. Ph. 475-2971. 14

FOR SALE - '66 Chevy pick-up, 6-cyl., stick. Ph. 475-7109. 15

FOR RENT - 2-bedroom house, fully carpeted. Patterson Lake. \$225 a month. First and last month's rent required. Ph. 498-2459. 14

CORN SHELLING. Phone 475-8759 after 6 p.m. x15

20 ACRES - Deer hunting between Grayling and Kalkaska. Borders State Forest. Beautifully wooded, nice deer herd, secluded. \$5,500 with \$1,000 down on 8 percent land contract. Call (616) 258-4873 or Write WILLOWOOD RETREATS, Route No. 1, Kalkaska, Michigan 49646. 20

FOR SALE - Airline stereo radio and/or 8-track, two years old. \$75. Ph. 475-8978. 14

FOR SALE - 215 CM light touring cross country skis, brand new. Must sell. \$85. Call 475-1240. x14

FOR SALE - Black female poodle, 6 months old, \$35. Ph. 475-1037 after 4 p.m. 14

FORD PICK-UP - '67 4-ton, automatic transmission, power steering. \$400. Ph. 475-7528. 15

FOR SALE - 1968 Chev. Impala 4-door. Turbo-Hydramatic, p.s., p.b. \$695. Phone 475-8910. x15

LOST - Black Labrador puppy, 2 1/2 months old. Lost Sunday on Madison St. Reward. Ph. 475-9315. 15

WANTED - Babysitter needed in my home Friday nights. Ph. 428-8511. 14

2-FAMILY YARD & GARAGE SALE - Bed, couch, two chairs, tables, tractor and tools, many small household items. From 9 to 6. Sat., Sept. 20, Sun., Sept. 21, 12:00-5:00 PM. x14

SQUASH FOR SALE - Butternut, acorn, buttercup and cabbage by the head or bushel. 756 Taylor St. Ph. 475-8003. 14

YOU SAVED and slaved for wall to wall carpet. Keep it new with Blue Lustre. Rent electric shampoer, \$1. Chelsea Hardware. 14

WANT ADS

LOVELY newly-decorated one-bedroom apt. available now. No pets. Call children. Phone Manchester 432-7022.

MOBILE HOME SPACE in Chelsea for medium or small size trailer. No dogs. Ph. 1-474-8552.

GARAGE SALE—Fri., Sept. 19, 3 to 8 p.m., Sept. 20, 8 to 6. Something for everyone, antiques. 754 Flanders St.

PIANO LESSONS in your home. Program varied to student. Theory, ear-training available. Master's degree. 622-5850.

BABYSITTER WANTED—Wed., Fri. and Sat. evens. Ph. 475-9319.

FOR SALE—1975 Victorian mobile home, fully skirting and set up at Holiday Manor Park. Buying home, must sell. Take over payments. Must see to appreciate. Call (517) 784-1232 after 5:30 p.m. or 475-1389 between 8 and 4:30.

FREE KITTENS to good homes. 2 black males, 1 female, and 2 female tigers, 6 weeks old, litter trained. Call 475-7106.

GARAGE SALE—Fri., Sept. 19, 1 p.m. to 6 p.m., Sept. 20, 10 a.m. to 8 p.m. Books, toys, clothes, tools, some antiques, miscellaneous items. 419 S. Main, Chelsea.

YARD SALE—4 family. Sept. 19, 20, 21, 10 a.m. to 6 p.m. Sewing machines, incubator, desks, clothes, wedding gown, size 10-12, misc. items, 6774 Dexter Township Rd. off North Territorial.

FOR SALE—Farnham H tractor, \$1,100. Ford 9N tractor with plow, \$850. Call 498-2677.

Card of Thanks

IN MEMORIAM
In memory of Russell Ferry who passed away one year ago. God saw that you were getting tired. He did what he thought best. He put his arms around you and whispered come to rest. Heaven's gates stood open wide one year ago today. With goodbyes left unspoken, you gently slipped away. We love and miss you.
* Your Wife, Children, and Grandchildren.

IN MEMORIAM
In loving memory of Russel F. Ferry who passed away one year ago, Sept. 20. Remembrance is a golden chain, death tries to break but all in vain. To have, to love and then to part is the greatest sorrow of one's heart. The years wipe out many things but this they wipe out never, the memory of those happy days when we were all together.
Sadly missed by his sons, Ronald and Gary and their families.

Cards of Thanks

THANK YOU
I wish to thank all my friends and relatives for the visits and cards received while I was in Chelsea Community Hospital. Also the doctors and nurses and the Rev. and Mrs. Liang.
Emery Pickell.

Legal Notices

MORTGAGE SALE
Default having been made in the terms and conditions of a certain mortgage made by CHARLOTTE GALLOWAY of Ypsilanti, Michigan, to CAPITAL MORTGAGE CORPORATION, a Michigan Corporation, dated the 3rd day of May, 1972, and recorded in the office of the Register of Deeds for the County of Washtenaw and State of Michigan, on the 17th day of May, 1972, in Liber 1385, page 22, which said mortgage was thereupon assigned to FEDERAL NATIONAL MORTGAGE ASSOCIATION, by assignment dated May 3, 1972, and recorded on May 17, 1972, in Liber 1385, page 24, and thereafter assigned to the Leader Mortgage Company by assignment dated August 31, 1972, and recorded on September 1, 1972, in the office of the Register of Deeds for the County of Washtenaw in Liber 1432 of the County of Washtenaw, Michigan, on the date of this notice, for principal and interest the sum of Nineteen Thousand Five Hundred & Eighty Eight (\$19,588.02).

And no action or proceedings at law or in equity having been instituted to recover the debt secured by said mortgage or any part thereof. Now Therefore, notice is given that the mortgagee, as aforesaid, has caused to be filed in the office of the Register of Deeds for the County of Washtenaw, Michigan, on the 14th day of September, 1975, a notice of sale of said mortgage to be foreclosed by a sale at public auction to the highest bidder, at the County of Washtenaw, Michigan, at the Court House in Ann Arbor, Michigan, (that being the building where the Circuit Court for the County of Washtenaw is held), on the 22nd day of October, 1975, at 10 o'clock a.m., local time, on the premises described in said mortgage, or so much thereof as may be necessary to pay the amount due, as aforesaid, on said mortgage, with the interest thereon at seven per cent (7%) per annum and all legal costs, charges and expenses, including the attorney fees allowed by law, and also any sum or sums which may be paid by the undersigned, necessary to protect its interest in the premises. Which said premises are described as follows:

At and certain parcels of land situated in the City of Ypsilanti in the County of Washtenaw, and State of Michigan, and described as follows, to-wit: LOT 70, GROVE PARK HOMES SUBDIVISION, as recorded in Liber 1385, page 22, of the County of Washtenaw County Records, Commonly known as: 3175 Grove Road, Ypsilanti, Michigan. During the six months immediately following the sale, the property may be redeemed.

Dated at Detroit, Michigan, August 25, 1975.
THE LEADER MORTGAGE COMPANY
Assignee of Mortgagee.
KEYS and KEYS
Attorneys for Assignee of Mortgagee.
Detroit, Michigan 48226
Sept. 4-13-18-25-Oct. 2

STATE OF MICHIGAN
In the Circuit Court for the County of Washtenaw.
File No. 75-16388-DO
Divorce Action
WILLIAM T. SCHARP, Plaintiff
NELL M. SCHARP, Defendant
Sandra A. Hazlett (Plaintiff)
Attorney for Plaintiff
ORDER TO ANSWER
At a session of said Court held in the Washtenaw County Building, in the City of Ann Arbor, County of Washtenaw, Michigan, on the 18th day of September, 1975.

of Ann Arbor, County of Washtenaw, on the 18th day of September, 1975, an action was filed by William T. Scharp, Plaintiff, against Nell M. Scharp, Defendant, in this Court, to obtain a divorce.
It is HEREBY ORDERED that the Defendant, Nell M. Scharp, shall answer or take such other action as may be permitted by law on or before the 25th day of October, 1975. Failure to comply with this order will result in a judgment by default against said defendant for the relief demanded in the complaint filed in this Court.
s/ William F. Ager, Jr.
Circuit Judge.
Sandra A. Hazlett (Plaintiff)
Attorney for Plaintiff
391 E. Liberty Street
Ann Arbor, Michigan 48108
1-810-615-5410
A true copy
Sandra A. Hazlett, Sept. 11-18-25-Oct. 2

MORTGAGE SALE
Default having been made in the conditions of a mortgage made by EDWARD J. GRUNDY and KATHY L. GRUNDY, his wife, to ANN ARBOR MORTGAGE CORPORATION, a Michigan Corporation, dated the 1st day of December, 1972, and recorded on December 18, 1972, in Liber 1385, page 22, of the County of Washtenaw County Records, Michigan, and assigned by said mortgage to FEDERAL NATIONAL MORTGAGE ASSOCIATION, by assignment dated December 13, 1972, and recorded on December 18, 1972, in Liber 1385, page 24, of the County of Washtenaw County Records, Michigan, on which mortgage there is claimed to be due at the date hereof the sum of \$20,858.86, plus interest at 10 1/2% per annum.

Under the power of sale contained in said mortgage and in the statute in such case made and provided, notice is hereby given that said mortgage will be foreclosed by a sale of the mortgaged premises, or some part of them, at public venue, at the Court House in Ann Arbor, Michigan, at 10:00 o'clock a.m., local time, on the 22nd day of October, 1975.

Said premises are situated in the Township of Ypsilanti, Washtenaw County, Michigan, and are described as: Subdivision of Section 13, Township of Ypsilanti, Washtenaw County, Michigan, Lot 48, Dianne Acres, a subdivision of part of the section 13, Township of Ypsilanti, Washtenaw County, Michigan, as recorded in Liber 14 of Plats, Pages 49 and 50, of the County of Washtenaw County Records, Michigan, and assigned by said mortgage to FEDERAL NATIONAL MORTGAGE ASSOCIATION, by assignment dated November 12, 1971, and recorded on November 21, 1971, in Liber 1385, page 54, of the County of Washtenaw County Records, Michigan, on which mortgage there is claimed to be due at the date hereof the sum of \$20,858.86, plus interest at 10 1/2% per annum.

Under the power of sale contained in said mortgage and pursuant to the statute in such case made and provided, notice is hereby given that on the 2nd day of October, A.D. 1975, at 10 o'clock a.m., local time, said mortgage will be foreclosed by a sale at public auction to the highest bidder at the West entrance of the Washtenaw County Courthouse, in the City of Ann Arbor, Washtenaw County, Michigan, that being the place where the Circuit Court of said County is held, the premises described in said mortgage, or so much as may be necessary to pay the amount due with interest at 7 per cent per annum and all legal costs and charges. Said premises are located in the Township of Ypsilanti, County of Washtenaw, Michigan, and are described as:

Lot 42, Grove Park Homes Subdivision, as recorded in Liber 1385, page 22, of the County of Washtenaw County Records, Michigan, and assigned by said mortgage to HOME SAVINGS AND LOAN ASSOCIATION, by assignment dated November 12, 1971, and recorded on November 21, 1971, in Liber 1385, page 54, of the County of Washtenaw County Records, Michigan, on which mortgage there is claimed to be due at the date hereof the sum of \$20,858.86, plus interest at 10 1/2% per annum.

Under the power of sale contained in said mortgage and pursuant to the statute in such case made and provided, notice is hereby given that on the 2nd day of October, A.D. 1975, at 10 o'clock a.m., local time, said mortgage will be foreclosed by a sale at public auction to the highest bidder at the West entrance of the Washtenaw County Courthouse, in the City of Ann Arbor, Washtenaw County, Michigan, that being the place where the Circuit Court of said County is held, the premises described in said mortgage, or so much as may be necessary to pay the amount due with interest at 7 per cent per annum and all legal costs and charges. Said premises are located in the Township of Ypsilanti, County of Washtenaw, Michigan, and are described as:

Lot 42, Grove Park Homes Subdivision, as recorded in Liber 1385, page 22, of the County of Washtenaw County Records, Michigan, and assigned by said mortgage to HOME SAVINGS AND LOAN ASSOCIATION, by assignment dated November 12, 1971, and recorded on November 21, 1971, in Liber 1385, page 54, of the County of Washtenaw County Records, Michigan, on which mortgage there is claimed to be due at the date hereof the sum of \$20,858.86, plus interest at 10 1/2% per annum.

Under the power of sale contained in said mortgage and pursuant to the statute in such case made and provided, notice is hereby given that on the 2nd day of October, A.D. 1975, at 10 o'clock a.m., local time, said mortgage will be foreclosed by a sale at public auction to the highest bidder at the West entrance of the Washtenaw County Courthouse, in the City of Ann Arbor, Washtenaw County, Michigan, that being the place where the Circuit Court of said County is held, the premises described in said mortgage, or so much as may be necessary to pay the amount due with interest at 7 per cent per annum and all legal costs and charges. Said premises are located in the Township of Ypsilanti, County of Washtenaw, Michigan, and are described as:

Lot 42, Grove Park Homes Subdivision, as recorded in Liber 1385, page 22, of the County of Washtenaw County Records, Michigan, and assigned by said mortgage to HOME SAVINGS AND LOAN ASSOCIATION, by assignment dated November 12, 1971, and recorded on November 21, 1971, in Liber 1385, page 54, of the County of Washtenaw County Records, Michigan, on which mortgage there is claimed to be due at the date hereof the sum of \$20,858.86, plus interest at 10 1/2% per annum.

Under the power of sale contained in said mortgage and pursuant to the statute in such case made and provided, notice is hereby given that on the 2nd day of October, A.D. 1975, at 10 o'clock a.m., local time, said mortgage will be foreclosed by a sale at public auction to the highest bidder at the West entrance of the Washtenaw County Courthouse, in the City of Ann Arbor, Washtenaw County, Michigan, that being the place where the Circuit Court of said County is held, the premises described in said mortgage, or so much as may be necessary to pay the amount due with interest at 7 per cent per annum and all legal costs and charges. Said premises are located in the Township of Ypsilanti, County of Washtenaw, Michigan, and are described as:

Lot 42, Grove Park Homes Subdivision, as recorded in Liber 1385, page 22, of the County of Washtenaw County Records, Michigan, and assigned by said mortgage to HOME SAVINGS AND LOAN ASSOCIATION, by assignment dated November 12, 1971, and recorded on November 21, 1971, in Liber 1385, page 54, of the County of Washtenaw County Records, Michigan, on which mortgage there is claimed to be due at the date hereof the sum of \$20,858.86, plus interest at 10 1/2% per annum.

Under the power of sale contained in said mortgage and pursuant to the statute in such case made and provided, notice is hereby given that on the 2nd day of October, A.D. 1975, at 10 o'clock a.m., local time, said mortgage will be foreclosed by a sale at public auction to the highest bidder at the West entrance of the Washtenaw County Courthouse, in the City of Ann Arbor, Washtenaw County, Michigan, that being the place where the Circuit Court of said County is held, the premises described in said mortgage, or so much as may be necessary to pay the amount due with interest at 7 per cent per annum and all legal costs and charges. Said premises are located in the Township of Ypsilanti, County of Washtenaw, Michigan, and are described as:

Lot 42, Grove Park Homes Subdivision, as recorded in Liber 1385, page 22, of the County of Washtenaw County Records, Michigan, and assigned by said mortgage to HOME SAVINGS AND LOAN ASSOCIATION, by assignment dated November 12, 1971, and recorded on November 21, 1971, in Liber 1385, page 54, of the County of Washtenaw County Records, Michigan, on which mortgage there is claimed to be due at the date hereof the sum of \$20,858.86, plus interest at 10 1/2% per annum.

Under the power of sale contained in said mortgage and pursuant to the statute in such case made and provided, notice is hereby given that on the 2nd day of October, A.D. 1975, at 10 o'clock a.m., local time, said mortgage will be foreclosed by a sale at public auction to the highest bidder at the West entrance of the Washtenaw County Courthouse, in the City of Ann Arbor, Washtenaw County, Michigan, that being the place where the Circuit Court of said County is held, the premises described in said mortgage, or so much as may be necessary to pay the amount due with interest at 7 per cent per annum and all legal costs and charges. Said premises are located in the Township of Ypsilanti, County of Washtenaw, Michigan, and are described as:

Lot 42, Grove Park Homes Subdivision, as recorded in Liber 1385, page 22, of the County of Washtenaw County Records, Michigan, and assigned by said mortgage to HOME SAVINGS AND LOAN ASSOCIATION, by assignment dated November 12, 1971, and recorded on November 21, 1971, in Liber 1385, page 54, of the County of Washtenaw County Records, Michigan, on which mortgage there is claimed to be due at the date hereof the sum of \$20,858.86, plus interest at 10 1/2% per annum.

Under the power of sale contained in said mortgage and pursuant to the statute in such case made and provided, notice is hereby given that on the 2nd day of October, A.D. 1975, at 10 o'clock a.m., local time, said mortgage will be foreclosed by a sale at public auction to the highest bidder at the West entrance of the Washtenaw County Courthouse, in the City of Ann Arbor, Washtenaw County, Michigan, that being the place where the Circuit Court of said County is held, the premises described in said mortgage, or so much as may be necessary to pay the amount due with interest at 7 per cent per annum and all legal costs and charges. Said premises are located in the Township of Ypsilanti, County of Washtenaw, Michigan, and are described as:

Lot 42, Grove Park Homes Subdivision, as recorded in Liber 1385, page 22, of the County of Washtenaw County Records, Michigan, and assigned by said mortgage to HOME SAVINGS AND LOAN ASSOCIATION, by assignment dated November 12, 1971, and recorded on November 21, 1971, in Liber 1385, page 54, of the County of Washtenaw County Records, Michigan, on which mortgage there is claimed to be due at the date hereof the sum of \$20,858.86, plus interest at 10 1/2% per annum.

Under the power of sale contained in said mortgage and pursuant to the statute in such case made and provided, notice is hereby given that on the 2nd day of October, A.D. 1975, at 10 o'clock a.m., local time, said mortgage will be foreclosed by a sale at public auction to the highest bidder at the West entrance of the Washtenaw County Courthouse, in the City of Ann Arbor, Washtenaw County, Michigan, that being the place where the Circuit Court of said County is held, the premises described in said mortgage, or so much as may be necessary to pay the amount due with interest at 7 per cent per annum and all legal costs and charges. Said premises are located in the Township of Ypsilanti, County of Washtenaw, Michigan, and are described as:

Lot 42, Grove Park Homes Subdivision, as recorded in Liber 1385, page 22, of the County of Washtenaw County Records, Michigan, and assigned by said mortgage to HOME SAVINGS AND LOAN ASSOCIATION, by assignment dated November 12, 1971, and recorded on November 21, 1971, in Liber 1385, page 54, of the County of Washtenaw County Records, Michigan, on which mortgage there is claimed to be due at the date hereof the sum of \$20,858.86, plus interest at 10 1/2% per annum.

Under the power of sale contained in said mortgage and pursuant to the statute in such case made and provided, notice is hereby given that on the 2nd day of October, A.D. 1975, at 10 o'clock a.m., local time, said mortgage will be foreclosed by a sale at public auction to the highest bidder at the West entrance of the Washtenaw County Courthouse, in the City of Ann Arbor, Washtenaw County, Michigan, that being the place where the Circuit Court of said County is held, the premises described in said mortgage, or so much as may be necessary to pay the amount due with interest at 7 per cent per annum and all legal costs and charges. Said premises are located in the Township of Ypsilanti, County of Washtenaw, Michigan, and are described as:

Lot 42, Grove Park Homes Subdivision, as recorded in Liber 1385, page 22, of the County of Washtenaw County Records, Michigan, and assigned by said mortgage to HOME SAVINGS AND LOAN ASSOCIATION, by assignment dated November 12, 1971, and recorded on November 21, 1971, in Liber 1385, page 54, of the County of Washtenaw County Records, Michigan, on which mortgage there is claimed to be due at the date hereof the sum of \$20,858.86, plus interest at 10 1/2% per annum.

Under the power of sale contained in said mortgage and pursuant to the statute in such case made and provided, notice is hereby given that on the 2nd day of October, A.D. 1975, at 10 o'clock a.m., local time, said mortgage will be foreclosed by a sale at public auction to the highest bidder at the West entrance of the Washtenaw County Courthouse, in the City of Ann Arbor, Washtenaw County, Michigan, that being the place where the Circuit Court of said County is held, the premises described in said mortgage, or so much as may be necessary to pay the amount due with interest at 7 per cent per annum and all legal costs and charges. Said premises are located in the Township of Ypsilanti, County of Washtenaw, Michigan, and are described as:

Lot 42, Grove Park Homes Subdivision, as recorded in Liber 1385, page 22, of the County of Washtenaw County Records, Michigan, and assigned by said mortgage to HOME SAVINGS AND LOAN ASSOCIATION, by assignment dated November 12, 1971, and recorded on November 21, 1971, in Liber 1385, page 54, of the County of Washtenaw County Records, Michigan, on which mortgage there is claimed to be due at the date hereof the sum of \$20,858.86, plus interest at 10 1/2% per annum.

+ Services in Our Churches +

FIRST UNITED METHODIST CHURCH
The Rev. Clive Dickinson, Pastor
Thursday, Sept. 18—
9:00 a.m.—Elizabeth Circle will meet at the home of Mrs. Pauline Porath.
10:00 a.m.—Volunteers organization meeting at the Methodist Home.

7:30 p.m.—Parent effectiveness training discussion in the educational unit.
Sunday, Sept. 21—
10:00 a.m.—Worship service.
Nursery provided.

10:20 a.m.—Church school, kindergarten through sixth grade.
11:00 a.m.—Coffee and punch hour.

11:15 a.m.—Junior-Senior High and Adult church school.
Monday, Sept. 22—
7:30 p.m.—Church school teachers training session in the educational unit.

Wednesday, Sept. 24—
3:30 p.m.—KINDER choir. Kindergarten through second grade.
4:00 p.m.—GLORY choir; third grade through fifth grade.
4:30 p.m.—Praise choir; sixth grade through eighth grade.
7:15 p.m.—Youth choir; ninth through twelfth grade.
8:00 p.m.—Chancel choir.

SALEM GROVE UNITED METHODIST CHURCH
3320 Notten Rd.
The Rev. Gerald R. Parker, Pastor
Every Sunday—
9:30 a.m.—Sunday school.
10:30 a.m.—Worship service.

OUR SAVIOR LUTHERAN CHURCH
1515 S. Main, Chelsea
The Rev. William H. Keller, Pastor
Sunday, Sept. 21—
9:00 a.m.—
Sunday school and Bible class.
10:30 a.m.—Worship with Holy Communion.

Monday, Sept. 22—
7:45 p.m.—Church council.
Wednesday, Sept. 24—
4:00 p.m.—Confirmation classes.
8:00 p.m.—Choir.

ST. THOMAS EVANGELICAL LUTHERAN
Ellsworth and Haab Rds.
The Rev. Jerome Dykstra, Pastor
Thursday, Sept. 18—
8:00 p.m.—Choir rehearsal.
Sunday, Sept. 21—
9:30 a.m.—Sunday school and Bible class.

10:45 a.m.—Worship with Holy Communion. Mission Festival at St. John's.
Tuesday, Sept. 23—
4:15 p.m.—Confirmation class.
Wednesday, Sept. 24—
10:00 a.m.—Bible Study.
Thursday, Sept. 25—
8:00 p.m.—Choir rehearsal. SWCIM Steering Committee at Bethel.

ST. JACOB EVANGELICAL LUTHERAN CHURCH
12501 Riehmiller Rd., Grass Lake
The Rev. Andrew Bloom, Pastor
Every Sunday—
9:00 a.m.—Worship service.
10:15 a.m.—Divine services.

ST. PAUL UNITED CHURCH OF CHRIST
The Rev. R. J. Ratliff, Pastor.
Thursday, Sept. 18—
3:00 p.m.—AA-J executive board.
7:30 p.m.—Sunday school teachers.
Saturday, September 20—
9:00 a.m.—Eight grade confirmation.

10:15 a.m.—Music.
11:00 a.m.—Seventh grade.
Sunday, Sept. 21—
9:00 and 10:30 a.m.—Church school.
10:30 a.m.—Worship service.
Tuesday, Sept. 23—
3:30 p.m.—Joyful Noise.
XYZ's Mystery Trip.
Wednesday, Sept. 24—
3:30 p.m.—Junior choir.
8:00 p.m.—Chancel choir.

ZION LUTHERAN CHURCH
Corner of Fletcher, Waters Rds.
The Rev. John R. Morris, Pastor
Sunday, Sept. 21—
9:00 a.m.—Sunday school.
10:15 a.m.—Mission Festival Worship. Guest: The Rev. Wahl.
7:30 p.m.—Evening Fellowship.
Monday, Sept. 22—
8:00 p.m.—Senior choir.
Tuesday, Sept. 23—
7:30 p.m.—Women's shuffleboard begins.
Wednesday, Sept. 24—
7:30 p.m.—Sunday school staff.
Thursday, Sept. 25—
8:00 p.m.—Five churches SWCIM Steering Committee.

NORTH LAKE UNITED METHODIST CHURCH
The Rev. David Stiles, Pastor
Friday and Saturday, Sept. 19 and 20—
Family Retreat.
Sunday, Sept. 21—
8:30 a.m.—Early service.
10:00 a.m.—Worship service.
11:00 a.m.—Sunday school.
Monday, Sept. 22—
8:00 p.m.—Nominating Committee.

Wednesday, Sept. 24—
8:00 p.m.—Adult Bible Study.
FIRST ASSEMBLY OF GOD
The Rev. Thos. R. Thodean, Pastor
Every Sunday—
9:45 a.m.—Sunday school.
11:00 a.m.—Worship service.
7:00 p.m.—Midweek services.
Every Wednesday—
7:00 p.m.—Christ's Ambassadors.
Every Friday—
1:00 p.m.—Ladies Bible study.

METHODIST HOME CHAPEL
Chaplain Ira Wood, Pastor
Every Sunday—
8:45 a.m.—Worship service.
CHELSEA BAPTIST CHURCH
377 Wilkinson St.
The Rev. James Stacey, Pastor
Every Sunday—
9:45 a.m.—Sunday school for the whole family.
11:00 a.m.—Morning worship service and children's church.
7:00 p.m.—Evening service, informal singing, sharing, study and discussion. (Nursery care provided for all services).
Home Bible Studies each week in the homes of the leaders.
Teen Ministry, Sunday at 6 p.m. and study groups during the week.

WATERLOO FIRST UNITED METHODIST
Parks and Territorial Rds.
Every Sunday—
9:15 a.m.—Morning worship.
10:15 a.m.—Sunday school.

ST. JOHN'S UNITED CHURCH OF CHRIST
Rogers Corners
The Rev. Carl Asher, Pastor
10:30 a.m.—Worship service.
BETHEL EVANGELICAL AND REFORMED CHURCH
(United Church of Christ)
Freedom Township
The Rev. Roman A. Reineck, Pastor
Every Sunday—
10:00 a.m.—Worship service.

CHURCH OF JESUS CHRIST OF LATTER-DAY SAINTS
Meetings at
St. Barnabas Episcopal Church
20500 Old US-12
Every Sunday—
11:00 a.m.—Priesthood meeting.
12:30 p.m.—Sunday school.
5:30 p.m.—Sacrament meeting.

FIRST UNITED PRESBYTERIAN CHURCH
Unadilla
The Rev. T. H. Liang, Pastor
Every Sunday—
9:45 a.m.—Sunday school.
11:00 a.m.—Worship service.

BAHA' FIRESIDE
Every Thursday—
8:00 p.m.—At the home of Toby Peterson, 705 S. Main St. Anyone wishing to learn about the Baha' faith is welcome.

CHURCH OF CHRIST
13881 Old US-12 East
Evangelist John M. Hamilton
Every Sunday—
10:00 a.m.—Church school.
11:00 a.m.—Worship service.
Nursery will be available.
6:00 p.m.—Worship service.
Every Wednesday—
7:30 p.m.—Bible study.

GREGORY BAPTIST CHURCH
The Rev. Paul White, Pastor
Every Sunday—
9:45 a.m.—Sunday school.
11:00 a.m.—Morning worship.
6:00 p.m.—Young people.
7:00 p.m.—Evening worship.
7:30 p.m.—Thursday mid-week worship service.

WATERLOO VILLAGE UNITED METHODIST CHURCH
818 Washington St.
Every Sunday—
11:15 a.m.—Worship service.

FARLEY CONSTRUCTION
322 HOWARD RD.
ADDITIONS - REMODELING
CONCRETE WORK
REPAIRS
475-8265 or 475-7643

CHS Newspaper Wins International Award for 1974-75

An international second-place award was earned by Chelsea High School's student newspaper, The *Unstandard*, in the national Quill and Scroll competition.

Quill and Scroll is an honorary journalism society that annually rates school newspapers according to a rigorous newspaper code.

Chelsea's award for a "newspaper of good achievements" rated the feature page under co-editors Debbie Packard and Liz Schwarz as "superior," and the general editing of the paper as "good."

The 1974-75 staff was led by Editor Ellen Bonus, with page editors Kurt Allshouse, Brian Smith, Pat Sawyer, and Beth Tobin. Mrs. Jar Nephewhouse and Dennis Andarsen are the faculty advisors.

Today's hectic pace was emphasized when a small boy shouted to his brothers, "Hey kids—Mom and Dad are going to be our sitters tonight."

Chelsea Girls Basketball Schedule

Sept. 18—Stockbridge away
Sept. 25—Manchester away
Sept. 30—Novi away
Oct. 7—Dexter* away
Oct. 14—Brighton* home
Oct. 16—Lumen Christi away
Oct. 21—Lincoln* home
Oct. 28—Saline* away
Nov. 4—Lincoln* away
Nov. 6—Novi* home
Nov. 11—Dexter* home
Nov. 14—Brighton* away
Nov. 18—Saline* home
*League games.

O Son of Man!

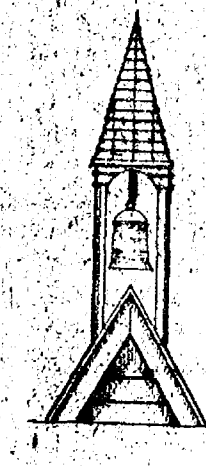
I loved thy creation, hence
I created thee. Wherefore,
do thou love Me, that I
may name thy name and
fill thy soul with the spirit
of life.

—BABA' SCRIPTURES.

SCHOOL HOUSE APARTMENTS ON HARRISON STREET

are pleased to announce that applications are being taken for September occupancy. HOTPOINT APPLIANCES - CARPETED AND DRAPED INDIVIDUAL HEATING AND AIR CONDITIONING. Model will be open 3 to 6 Sept. 18, Sept. 19, 3 to 6; Sept. 20, 10 to 3; Sunday, Sept. 21, 12 to 5.

For Further Information
Phone (313) 475-1509 or 761-3025
BUILDING BY WEBER HOMES
MANAGEMENT BY R.E.T.S. ENTERPRISES, INC.



NEW LISTING

Seeing is believing. The charm of this older home cannot be seen from the neat and clean outside. Call and arrange an eye-opening inspection of this conveniently located home in Chelsea.

Real Estate One.
OF WASHTENAW
REALTORS
AL KLEIS 475-7322 1196 M-52, Chelsea 475-8693

FLETCHER & KLEIN, INC. REALTORS

JUST LISTED—Beautiful lake-front home on Patterson Lake. This totally maintenance free home is an ideal retirement home, and all for only \$43,500.

HORSE FARM POSSIBILITIES—With this almost new 3-bedroom ranch. Over 15 acres with pole barn and pond. \$49,900.

CALL JIM KONARSKA
OFFICE: 426-3988 or HOME PH.: 498-2726
BIRCHWOOD FARMS REP.

SOUTHERN BOY MANOR MOTEL

Efficiency Units - By Day, Week, or Month
13190 M-52
PHONE (517) 851-4213
(2 miles south of Stockbridge)

CUSTOM BUMPING and PAINTING</



BOWLING NEWS



Senior House

Standings as of Sept. 15

	W	L
Chelsea Lumber	12	2
Sarns, Inc.	12	2
Mark IV Lounge	11 1/2	2 1/2
Village Books	10	4
S. J. Custom Leather	9	5
Frank Groh's Chevrolet	9	5
Gambles	9	5
Luke's Sporting Goods	7 1/2	6 1/2
Dana's Top Five	7	7
Washenaw Crop Service	7	7
Bauer Builders	7	7
Village Motor Sales	7	7
Schneider's Grocery	5	9
Sylvan Center	5	9
Walt's Barber Shop	4	10
Seitz's Tavern	2	12
Ipsco	2	12
Dexter Automatics	0	14

600 series: G. Beeman, 633.
525 and over series: J. Harook, 575; M. Poertner, 536; R. Farnier, 543; R. Sweeney, 539; R. Bauer, 550; D. Hatley, 526; P. Fletcher, 553; L. Bauer, 526; D. Horst, 561; J. Eder, 530; H. Burnett, 563; R. Sevorn, 545; W. Westphal, 563; R. Haas, 530; A. Peterson, 540; M. Sweet, 528; D. Murphy, 530; R. Holliday, 532; G. Knickerbocker, 569; J. Ladley, 535; C. Genske, 543.

210 and over games: G. Beeman, 221, 214; J. Harook, 235; N. Farnier, 212; D. Hatley, 225; H. Burnett, 210; W. Westphal, 217; G. Knickerbocker, 212; C. Genske, 220.

Leisure Time

Standings as of Sept. 11

	W	L
Unpredictables	6	2
Four Stooges	6	2
The Lakers	5	3
Roadrunners	4	4
Sugar Loafers	4	4
Holy Rollers	3	5
Highly Hopefuls	3	5
Lady Bugs	3	5
Slowpokes	3	5
Crackpots	1	7

500 series: D. Dault, 518; V. Wheaton, 531.
200 games: D. Dault, 200.
140 games and over: C. Kuzon, 148; C. Hoffman, 150; 146; S. Weber, 143; D. Dault, 141; 177; L. Haller, 148; A. Vanderwaard, 143; D. Hafner, 148; 153; B. Mull, 151; 148; E. Haydock, 141; J. Mull, 145; M. Maier, 142; M. Herrin, 150; C. Engler, 154; 142; J. Staphis, 166; R. Forner, 153; E. Heller, 168; 177; B. Robinson, 152; S. Centilli, 148; 147; D. Thompson, 149; 153; K. Haywood, 144, 155; 146; V. Wheaton, 152, 178, 161; E. Williams, 164, 152; S. Brown, 151, 145; W. Tropp, 152; M. O'Donnell, 143.
400 series and over: S. Brown, 421; D. Thompson, 416; S. Friday, 409; K. Haywood, 455; E. Williams, 430; R. Forner, 407; E. Heller, 484; B. Robinson, 400; S. Centilli, 434; C. Engler, 401; D. Hafner, 433; B. Mull, 432; J. Mull, 404; C. Hoffman, 434.

Chelsea Nite Owl League

Standings as of Sept. 15

	W	L
Steele's Heating & Cooling	14	0
Southern Boy Take-Out	14	0
Hanco Sports Center	12	2
Mich. Kitchen & Bathroom	12	2
Chelsea Finance	12	2
McCalla Feeds	11	3
Ted's Standard	9	5
Cavanaugh Lake Store	7	7
Bollinger's Sanitation	7	7
Lithocrafters No. 1	5	9
Wahl's Oil	5	9
V.F.W. 4076	5	9
Norm's Body Shop	4	10
Lithocrafters No. 3	3	11
Team No. 3	2	12
Belser's Construction	2	12
The Spoilers	2	12
Lithocrafters No. 2	0	14

200 games and over: M. Bristle, 204; A. Peterson, 210; T. Steele, 209; J. Barnes, 214; E. Buku, 200.
500 series and over: F. White, 510; O. Hansen, 508; J. Elliott, 503; G. Ahrens, 517; G. Beeman, 545; C. Staphis, 514; J. Stoffer, 517; A. Peterson, 537; T. Steele, 563; S. Knepper, 553; T. Colvia, 504; M. Froilerton, 528; E. Buku, 558; R. Nix, 510; D. Buku, 550.

Junior House

Standings as of Sept. 11

	W	L
Delf's Paints	14	0
Boyer Automotive	12	2
Chelsea Lanes	11	3
Mac Tools	10	4
Wolfyline-Bar	10	4
Slocum Const.	10	4
Jim Bradley Pontiac	7	7
Smith's Service	7	7
Dana Demons	7	7
Washenaw Engineering	7	7
3-D Sales & Service	7	7
Dana Maintenance	7	7
Rockwell International	5	9
Team No. 1	4	10
Trading Post	4	10
Mark IV Lounge	2	12
Team No. 8	2	12
Doug's Painting	0	14

600 series: R. Hinderer, 648; W. Kruse, 640.
525 and over: D. Feliks, 560; R. Westcott, 544; J. Borders, 531; E. Vasas, 574; W. Beeman, 577; P. Kelly, 564; A. Sannes, 538; T. Dittman, 537; G. Beeman, 592; S. Glazier, 592; E. Greenleaf, 554; T. Larson, 542; D. Crosby, 564; M. Smith, 558; M. McAllister, 549; W. Brown, 568; D. Alexander, 549; T. Karns, 530; A. Fletcher, 549; 582; L. Salyer, 563; J. Toma, 531; J. Harook, 598; J. Eder, 551; L. Bauer, 584; R. Ringe, 530.
210 or over: R. Westcott, 235; R. Hinderer, 213, 235; W. Kruse, 228, 214; E. Vasas, 213; S. Hayton, 211; A. Sannes, 212; G. Beeman, 212; S. Glazier, 215; E. Greenleaf, 214; T. Steele, 213; D. Crosby, 210; W. Brown, 211; D. Alexander, 211; J. Harook, 211; L. Bauer, 245; K. Norris, 214; B. Ringe, 213.

Junior Swingers

Standings as of Sept. 13

	W	L
Fantastic Five	3	1
Team No. 3	3	1
Team No. 10	3	1
Team No. 2	2	2
Team No. 1	2	2
Boyer Automotive	2	2
Team No. 8	2	2
Born Losers	1	3
Alley Runners	1	3
Team No. 9	1	3

Girls, games 120 and over: K. Tobin, 204, 173, 139; S. Schulze, 175, 165, 156; C. Collins, 183, 137, 134; K. Romine, 168; D. Packard, 165, 154, 129; P. Greenleaf, 156, 152, 142; D. Elliott, 151, 123, 121; M. Northrop, 144, 135, 123; T. Alexander, 142, 127; S. Miller, 138; M. Fahrner, 138; M. Wright, 133; N. Wideman, 130, 121; K. Stepp, 121.
Boys, games 350 and over: K. Tobin, 518; S. Schulze, 496; C. Collins, 454; P. Greenleaf, 450; D. Packard, 440; M. Northrop, 402; D. Elliott, 395; K. Romine, 391; T. Alexander, 379; M. Fahrner, 360; N. Wideman, 357.
Boys, games 150 and over: C. Sannes, 303, 182; S. Lyerla, 182, 153; R. Stoddard, 180; M. Foster, 179, 172; D. Thompson, 178, 163; G. Dils, 175; S. Hegadorn, 169; B. McGibney, 168; M. Burnett, 168, 164; J. Push, 156; C. Ford, 155, 153.
Boys, series 440 and over: C. Sannes, 527; M. Foster, 496; S. Lyerla, 469; D. Thompson, 465; M. Burnett, 464; G. Dils, 450.

Rolling Pin

Standings as of Sept. 16

	W	L
Moppper Uppers	7	1
Blenders	6	2
Dish Rags	6	2
Team No. 17	5	3
Grinders	5	3
Kitchen Kapers	5	3
Pots	4	4
Jolly Mops	4	4
Spooners	4	4
Sugar Bowls	3	5
Egg Beaters	3	5
Coffee Cups	3	5
Mixers	3	5
Brooms	3	5
Beaters	3	5
Poachers	3	5
Kookie Kutters	2	6

500 series: S. Nix, 501; E. Neibauer, 500; J. Edick, 505; P. Harook, 506; D. McAllister, 548.
425 and over series: D. Ringe, 434; M. Eeles, 461; E. Williams, 437; G. Clark, 478; B. Marsh, 432; C. Shepherd, 470; R. Foster, 448; J. Shepherd, 445; J. Roe, 456; S. Parker, 440; R. Musbach, 444; E. Gibbs, 437; T. Jarvis, 461; D. Butler, 477; R. Dils, 457; M. Kolander, 441; L. Volta, 465.
150 and over games: N. Hill, 163; J. Myers, 151; D. Ringe, 179; P. Smith, 157; D. Anderson, 169; S. Nix, 159, 183, 159; E. Neibauer, 173, 171, 130; J. Edick, 166, 196; M. Eeles, 157, 151, 153; E. Williams, 152, 150; G. Clark, 180, 173; B. Marsh, 157; C. Shepherd, 168, 167; R. Foster, 162, 150; J. Shepherd, 161; N. Hohn, 163; J. Roe, 151, 167; P. Harook, 160, 159; P. Borders, 157; S. Parker, 160; D. Diriam, 163; K. Musbach, 171; C. Dmoch, 161; E. Gibbs, 174; D. Neuman, 153; S. Van Natter, 159; T. Jarvis, 152, 168; D. McAllister, 164, 176, 208; D. Bable, 157; D. Butler, 178, 153; R. Dils, 152, 168; B. Halst, 152, 150; M. Kolander, 150, 167; L. Volta, 152, 171.

Chelsea Suburban

Standings as of Sept. 10

	W	L
Dancer's	12	5
Chelsea Assoc. Builders	10	4
Dairy Queen	9	5
Waterloo Garage	9	5
Chelsea State Bank	8	6
Fletcher Mobil	7	7
Cavanaugh Lk. Store	7	7
Chelsea Drug	6	8
Dana Dee Lites	5	9
State Farm	5	9
Mark IV Lounge	4	10
Frisinger Realty	2	12

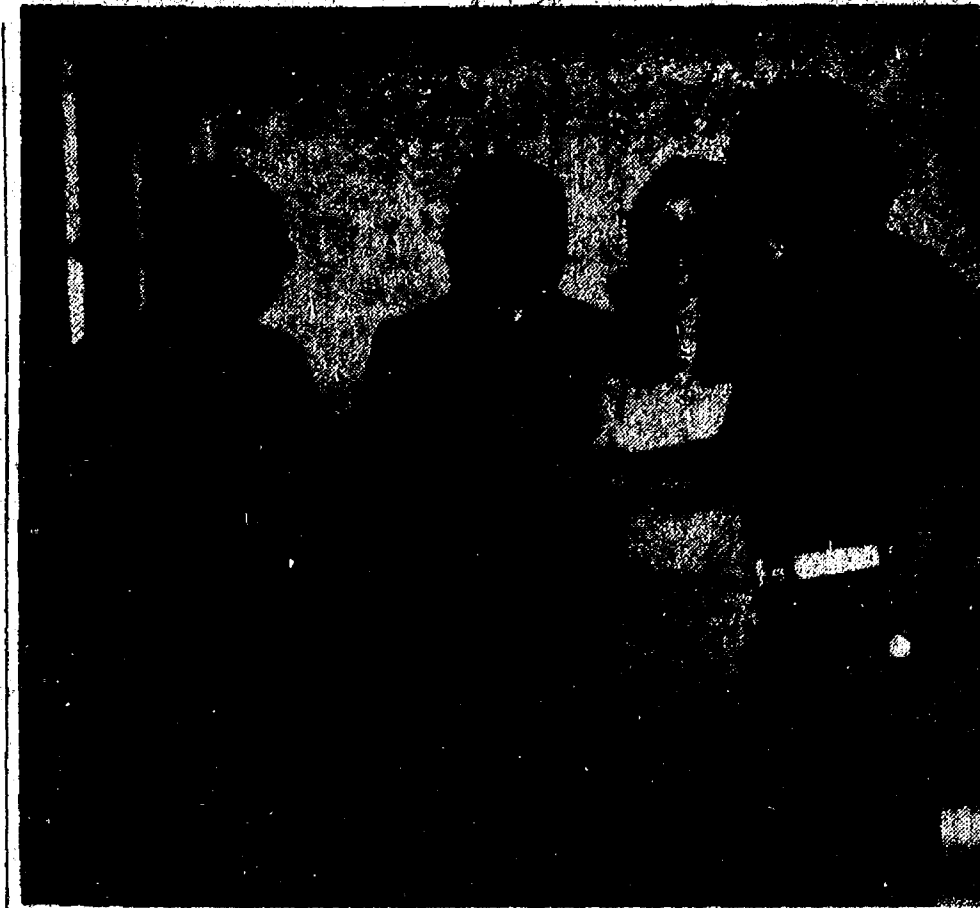
150 games and over: N. Packard, 212; R. McGibney, 200; S. Bowen, 194, 166, 172; C. Stoffer, 161, 157, 159; D. Hawley, 154; P. Harook, 168; V. Stewart, 150, 166, 159; C. Nixon, 151; M. DeLaTorre, 156, 155; C. Peterson, 150; R. West, 161, 151, 169; B. Fike, 157; M. Neal, 159; G. Baczynski, 154; K. Snyder, 166, 182; N. Prater, 166, 156; J. Schulze, 152, 161, 154; R. Klink, 153; T. Monroe, 188, 188; M. Inbody, 152; K. Chapman, 151; J. Weber, 158; E. Figg, 168; E. Miller, 170; N. Collins, 171, 169; N. Packard, 160, 155; L. Jarvis, 157, 151; D. Keezer, 163; S. Hafner, 161, 190; M. Usher, 187, 193, 164; D. McAllister, 168; V. Harvey, 156; A. Hocking, 175, 155.
500 series and over: M. Usher, 527; S. Bowen, 532; N. Packard, 547; T. Monroe, 522.
425 series and over: M. DeLaTorre, 451; C. Stoffer, 477; V. Stewart, 475; P. Harook, 438; B. Fike, 430; R. West, 481; R. McGibney, 477; R. Rossbach, 432; K. Snyder, 481; N. Prater, 435; J. Schulze, 467; E. Figg, 448; N. Collins, 461; L. Jarvis, 446; S. Hafner, 459; A. Hocking, 443.

Bulldogs Mixed

Standings as of Sept. 11

	W	L
Leftover	6	2
Doug's Painting	6	2
Spadafore's Stores	5	3
Silvers Bar	5	3
Good Licks	5	3
Hawley Truck Repair	4	4
Three R's Appliance	4	4
The Rats	4	4
3-D Sales	4	4
Huron Camera	4	4
Mac's Auto Sales	3	5
Team 6	3	5
Kyle Drywall	2	6
Ipsco	2	6

Men, high games and series: R. Nix, 183, 211, 195, 589; B. Kaiser, 189, 190, 548; R. Trevino, 201; T. Stafford, 172; T. Broughton, 172; D. George, 171; M. Grobaski, 171.
Women, high games and series: L. Hill, 163; J. Myers, 151; D. Ringe, 179; P. Smith, 157; D. Anderson, 169; S. Nix, 159, 183, 159; E. Neibauer, 173, 171, 130; J. Edick, 166, 196; M. Eeles, 157, 151, 153; E. Williams, 152, 150; G. Clark, 180, 173; B. Marsh, 157; C. Shepherd, 168, 167; R. Foster, 162, 150; J. Shepherd, 161; N. Hohn, 163; J. Roe, 151, 167; P. Harook, 160, 159; P. Borders, 157; S. Parker, 160; D. Diriam, 163; K. Musbach, 171; C. Dmoch, 161; E. Gibbs, 174; D. Neuman, 153; S. Van Natter, 159; T. Jarvis, 152, 168; D. McAllister, 164, 176, 208; D. Bable, 157; D. Butler, 178, 153; R. Dils, 152, 168; B. Halst, 152, 150; M. Kolander, 150, 167; L. Volta, 152, 171.



ED GREENLEAF, owner of Chelsea Lanes (far right) and his wife Kathy present a check for \$300 to Fathers Germano and Umberto (left to right respectively) of St. Louis School. The check represents monies divided among bowling proprietors from a state-wide charities tournament held last January.

Bowlers Contribute \$500 To St. Louis School

St. Louis School for Boys is \$500 richer, thanks to Chelsea bowlers who bowled for charity last January. The Bowlers Charity Tournament, sponsored jointly by the Bowling Proprietors of Michigan and the Detroit Free Press, is conducted one week out of each bowling season at all bowling establishments throughout the state of Michigan. According to Ed Greenleaf, owner of Chelsea Lanes, all bowlers are encouraged to donate \$1 and to bowl using regular league scores for the evening.
In the 1974-75 season Chelsea bowlers contributed \$385 to a total of \$79,860 collected throughout the state of Michigan. Of that, \$26,000 was returned to the bowlers in the form of prizes; \$54,000 was distributed to charities in the state. Greenleaf explained that the total monies for charity are divided equally between the Free Press

Fortner, 488; M. Spence, 521; S. Beeman, 670; D. Carpenter, 514; Men, 160 games and over: A. Hansen, 223; W. Teachworth, 200, 169; O. Inbody, 188, 180; G. Beeman, 204, 233, 233; M. Spence, 175, 180, 160; D. Carpenter, 203, 160; J. Fortner, 159, 171; F. Palacios, 160; R. Fox, 171; M. Fix, 161, 161.
Women; 425 series and over: M. Inbody, 448; L. Dettling, 460; D. Beverie, 483; P. Fortner, 471; J. Orthring, 442; V. Guenther, 475; C. Klapperich, 442; D. Dettling, 436.
Women, 150 games and over: M. Inbody, 159; L. Fox, 162; M. Van Aken, 173; L. Rettig, 157, 160; C. Powell, 151; D. Beverie, 160, 173; P. Fortner, 159, 157, 153; B. Carpenter, 158; J. Elliott, 170; J. Orthring, 155, 163; V. Guenther, 187; C. Klapperich, 168; D. Dettling, 154, 158.
Men, 175 games or better: S. Cook, 180; J. Harmon, 211, 213; D. Alexander, 211; A. Sannes, 183; F. C. Klapperich, 442; J. Torrice, 186; B. Rawson, 187, 213; G. Popp, 211, 244; R. Adamson, 193; E. Southwell, 191; D. Ellenwood, 191; E. Vasas, 177, 213, 181; L. Bell, 194; C. Smith, 181; T. Wisniewski, 190, 189; M. Packard, 214; E. Keezer, 178.
Men, 500 series or better: J. Harmon, 571; D. Alexander, 553; A. Sannes, 523; F. Northrop, 559; R. Rawson, 548; G. Popp, 627; R. Adamson, 511; E. Vasas, 571; L. Bell, 515; T. Wisniewski, 512.

Chelsea Lanes Mixed

Standings as of Sept. 12

	W	L
Adamson & Henson	12	2
Floyd's Gang	11	3
Mark IV Lounge	10	4
The Hopefuls	10	4
Harmon & Cook	9	5
Rushing's Temporary Help	7	7
DJ's	7	7
Number Ones	6	8
Torrice & Rawson	6	8
Doug's Painting	5	9
Buckeye Transplants	5	9
Team No. 18	5	9
Federal Screw Outlaws	5	9
Countryside Builders	4	10
Ann Arbor Centerless	4	10
Bollinger's	4	10
Hook, Line & Stinkers	3	11

Women, 150 games or better: E.

Telephone Your Club News To 475-1371.

YOU TOO CAN BE A HERO!

\$8.00 Buys 6 admissions To Kiwanis Travelogues Use 'em all for 1 show or 1 for all shows. Kiwanis will be calling!

CHELSEA LANES, Inc.

1180 M-52 CHELSEA

PHONE 475-8141

BOWLERS!

NEW FALL LEAGUES

Starting in September

PROFESSIONAL LEAGUE

TUESDAY AFTERNOON . . . 4:00 p.m.

Teachers - Nurses - Aides - Skilled Trades, etc.

SUNDAY MIXED . . . 6:00 p.m.

2 couples on a team.

BOWLING BALLS, BAGS, SHOES

NOW IN STOCK.

MARK IV LOUNGE

PHONE 475-1951

1180 M-52 CHELSEA

Are you gambling with your family's security?

Suppose you were sued for \$500,000 . . . and lost! Would you be able to stay out of bankruptcy? And what would happen to your family security? Suits involving hundreds of thousands of dollars are all too frequently started against businessmen and professionals simply because they are well-known as affluent and successful people! Here's an economical way to avoid such a risk! Our Executive Liability Insurance provides up to \$5,000,000 of protection for you and your family. Call us now. We can probably put all your liability insurance together and even save you some money.

it's better **altogether**

A. D. MAYER AGENCY, INC.

BOB BARLOW, AGENT
PHONE 475-2030
115 PARK ST., CHELSEA

Auto-Owners Insurance
Life-home-Car-Business

Wayne Dari-Blen Rations...

"New Concept" Feeds of the 70's

When a Wayne Dari-Blen ration starts working in the rumen, it keeps right on working . . . hours and hours longer than ordinary dairy feeds with only a single source of protein. Dari-Blens offer multiple-source protein and other key milk-producing ingredients which work together to increase the level of Volatile Fatty Acids in the rumen. This is the "secret" of Dari-Blens . . . the secret of top milk production.

Many dairymen want to "cash in" on the economy of non-protein nitrogen. If this is you . . . if you feed a medium level of milking ration, ask us about Wayne 42 Dari-Blen. It's 22 percent natural protein and 20 percent non-protein nitrogen. It's one of Wayne's NEW CONCEPT feeds of the 70's.

McCALLA FEED SERVICE

12875 Old US-12, Chelsea 475-8153

Drink More Milk

FISH FRY

COMPLETE DINNER

Our own beer batter perch, fries, cole slaw, roll and butter, \$1.75. Take-outs 10c extra.

EVERY FRIDAY 5 to 9 p.m.

Bring Your Family!

CHELSEA PUB

The Vanishing American

About half of the U. S. dairy farmers in business five years ago no longer are.

In Michigan, the nation's sixth-ranking dairy state, the number of dairy farmers has dropped from about 14,000 in 1964 to 7,700 last year. The number is expected to be 4,500 by 1980.

Why?

Feed prices have increased some 72 per cent in the past two years. The cost of fertilizers has doubled. The price of fuel is nearly twice what it was in 1973. Interest rates for loans to enable farmers to expand their operations and update their equipment are higher than in 1973.

And dairy farmers' incomes have not kept pace with those increases in their production costs.

While the number of dairy farmers—and dairy cows—is dwindling, output per farm is increasing through a trend to larger, more efficient dairy farm operations. This is what today's dairy farmers are doing to help meet the needs of the American consumer and to help ward off dependence on other countries for such milk products as cheese, butter and nonfat dry milk.

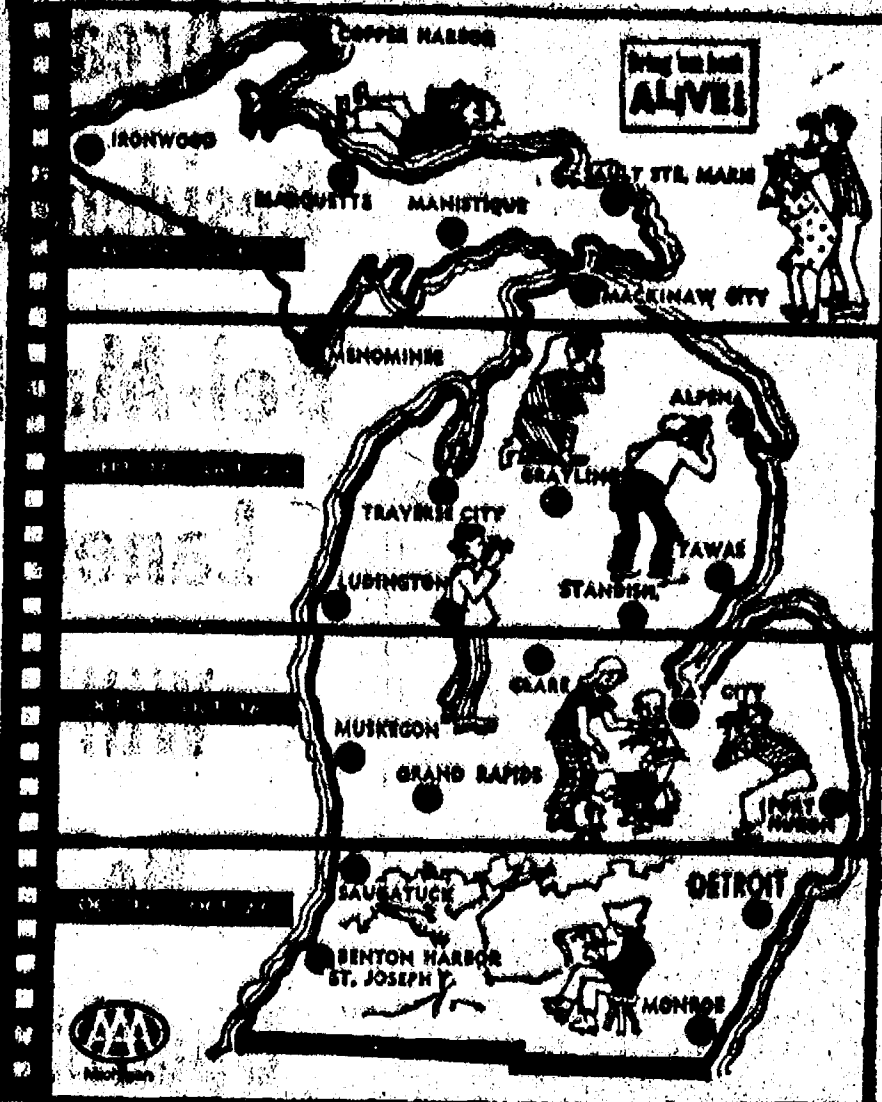
And that's part of the reason we at MMPA think this Vanishing American is important and it's why we think this great natural resource—the dairy farming industry—is worth preserving.

Michigan Milk Producers Association

Are you gambling with your family's security?

Suppose you were sued for \$500,000 . . . and lost! Would you be able to stay out of bankruptcy? And what would happen to your family security? Suits involving hundreds of thousands of dollars are all too frequently started against businessmen and professionals simply because they

Fall Color Schedule for 1975



Fall Color Season Arrives in Michigan

Use your camera to capture the beauty of Michigan's fall color season to savor after the leaves have fallen and are covered by winter's snow, suggests Automobile Club of Michigan.

Michigan's rugged Great Lakes shoreline, jewel-like inland lakes, gently rolling countryside and quaint little villages provide a scenic background for the vivid hues of Michigan's woods in autumn color.

Bert Emanuele, chief photographer for Auto Club's Motor News magazine, advises camera buffs in search of fall color photos to "think color and watch for interesting props."

"Try to include some action or activity when shooting to get the more natural look," he says. "For instance, when photographing Michigan's colorful autumn scenes, make sure you include a child or animal in your picture."

"Or, to get a farm atmosphere, photograph a farmhouse or a cornfield with trees in the background."

Emanuele says interesting props would include historical markers, old lighthouses, rustic bridges and cider mills. A child or pet at play usually makes a more interesting subject than one staring back at the camera lens, he notes.

Upper Peninsula camera buffs in search of fall color pictures might investigate the many ghost towns and abandoned mines that can be found in the Keweenaw Peninsula.

Color tours in the Leelanau Peninsula and Traverse City area include scenic lighthouses—at Northport and on the Old Mission Peninsula. A fish hatchery and Christmas tree farms are some of the attractions in the Cadillac area, while the Lake Shore Scenic Drive will provide awesome views of woods and water between Petoskey and Mackinaw City.

The Isabella Indian Reservation and Central Michigan University are featured on a tour of the Midland-Mount Pleasant area, and quaint covered bridges near Smyrna and Ada are part of the Ionia-area tour. Other color tours in southeastern Lower Michigan include cider mills, "pick-them-yourself" apple orchards, antiques and nature centers.

The state's freeways and major highways are ideal corridors for getting to the scenes of Michigan's fall color, but take to the byways to really enjoy the splendor of forests ablaze in autumn, Auto Club advises.

Camera buffs may obtain color tour information from area tourist bureaus or chambers of commerce, and Auto Club members will find up-to-date reports available at local offices across the state.

Because of last month's record

rainfall, the fall color season will arrive in Michigan at least a week earlier than last year. Tourist officials in the Upper Peninsula estimate color will be at its peak there starting Sept. 20 and ending Oct. 2.

The color will spread to northern Lower Michigan Sept. 27 through Oct. 9; central Lower Michigan, Oct. 4-16; and southern Lower Michigan, Oct. 11-23.

Red maples, dogwoods and ash are among the first trees to change color. The red or swamp maple leaves turn a brilliant red while dogwoods are a rich scarlet and ashes have a coloring all their own—a blend of yellow and purple.

Hickories, redbud, birch and poplar turn a golden yellow early in fall, while Hawthornes, many crabs, sweet gum, cherries, oaks and mountain ash become red or red-orange. A few, such as sugar maple, have a blend of red, orange and yellow all on the same leaf.

The fall color season has become the "third season" for Michigan tourism—the second largest industry in the state, Auto Club notes.

Tourism is at an all-time high in Michigan, and this fall's tourist business is expected to be up 15 percent compared to last fall, Auto Club adds.

The fall season alone represents 20 percent of the total tourist year in dollar expenditures, so this means tourists will spend \$440 million in Michigan this fall season, Auto Club says.

Public Hearings Slated on HCMA Study Committee

Persons interested in the public hearings concerning the resolution to create a special committee to study the Huron-Clinton Metropolitan Authority (HCMA) may still attend sessions at the following locations:

Monday, Sept. 22, 1:30 p.m. — County Commissioners Auditorium, City-County Bldg., 2 Woodward Ave., Detroit.

Monday, Sept. 29, 7:30 p.m. — County Commissioners Auditorium, Oakland County Service Center, 1200 N. Telegraph Rd., Pontiac.

Discussion at the public hearings will include the functions, purposes and goals of the HCMA and whether or not to change them.

WATER CONSUMER

Agriculture is the nation's major consumer of water. Of all the ground and surface water used in the United States, 86 percent is used in agriculture, mostly for irrigation.

ASK THE GOVERNOR

by William G. Millman

Question: Governor, I heard that with the help of the Department of Natural Resources, the Kirtland's Warbler has taken over Camp Grayling from the National Guard. How on earth could any "Kook" even get the idea that we should give up the 122,000 acres at Camp Grayling for an estimated 334 adult Kirtland's Warblers, since the camp has been considered a part of our national defense?

Governor: Sometimes the solutions to certain problems appear to be rather simple and easy to correct, when in fact they are not. The Kirtland's Warbler illustrates this point well. It is a fact that this warbler nests only in restricted areas in Michigan. Biologists do not know why, but these birds are so very demanding in their requirements that they use only these specific habitats.

Rest assured that the 122,000 acres of Camp Grayling lands will not be "given up" to the warblers. The Department of Natural Resources and the Michigan National Guard, with guidance and counseling from my office, together worked out an agreed-upon schedule of use for key parcels of the Camp Grayling lands in order to avoid disruption of the warbler breeding and nesting season last spring. This worked out satisfactorily for all parties concerned.

As someone has said of all endangered species, "We are neither so rich that we can afford to lose them, nor so poor that we cannot afford to save them." Many people would agree with such a philosophy wholeheartedly. Each species lost is lost forever—with an impact that is immeasurable.

Question: My family and I have just returned from a 6,744-mile

trip to the state of Washington. Heading home on I-44 East, we stopped at a rest area. This rest area was dirty and for a better choice of words "it stunk." I believe it to be bordering on an unsanitary condition. I realize that the usage there is probably tremendous, but if it cannot be improved to handle the capacity to the point of a healthy, acceptable place, it should not be available until such time as it can be corrected.

Governor: I appreciate your letter and have forwarded a copy of it to the Michigan Department of State Highways and Transportation and asked them to take immediate steps to correct the situation.

The first rest areas, which were built 15 years ago, were all of the rustic type, patterned after the network of tourist roadside parks which had operated successfully for many years. It didn't take long, however, before it became obvious that rustic facilities can not be properly maintained in high traffic situations. As a result, the State Highway Commission is now building only modern facilities, and the rustic rest areas are being modernized as rapidly as the details can be worked out.

The condition of the rest area on I-44 which you described is one of several where it has not been possible as yet to solve all of the problems, but I am advised that as soon as the municipal sewer is extended so the rest area can be hooked into it, the modernization project will be placed under contract. In the meantime, changes will be made which, hopefully, will improve the present situation. I hope your next stop at a highway rest area will be more pleasant.

Question: I just returned from camping out at Interlochen, and I was pleased to see the state park so clean and well managed. Why doesn't the state charge out-of-state cars for using our parks because that's wear and tear on Michigan property which should be reserved for Michiganders?

Governor: In 1967 a differential state parks motor vehicle permit fee was established with the intent that such a program would discourage visitors from other states, thereby making more facilities available for resident campers. This action did not appear to change use patterns. It did, however, make many out-of-state

The Chelsea Standard, Thursday, September 18, 1975 13

visitors unhappy to find that they were discriminated against.

Recreation is one of the top businesses in Michigan, and the state parks are one of the major contributing factors. At times I may seem that the majority of campers in the state park campgrounds are from other states, but by actual count, only 32 percent of the total are from somewhere other than Michigan.

Studies reveal that the average camping family spends \$18 to \$22 per day in the vicinity of their camp. These expenditures greatly aid the state's economic situation along with the associated taxes that accrue to the state. "The Vacation State" status that Michigan has attained and its financial impact on the well-being of state residents is very important. We are proud of our Michigan Water Wonderland and glad that it attracts so many visitors.

Consumption of eggs, pork and beef all dropped during the past year in this country, while sales of ready-to-eat cereals increased. Cereal manufacturers spend \$60 million per year to buy trinkets for product promotions.

Rep. Mike Conlin Schedules Meeting at Waterloo Town Hall

Representative Mike Conlin (R-23rd District) is holding his fifth "Town Hall Meeting" Sept. 23 for residents of Waterloo and Lyndon townships.

The meeting will begin at 8 p.m. in Waterloo Township Hall, 8061 Washington St., Waterloo.

"I've organized a series of old fashioned 'town hall' meetings," Conlin said, "during our bicentennial celebration to generate better two-way communication with the residents of the 23rd district."

Conlin said he has been pleased with the turn-out of those participating in his other meetings throughout the district.

"I need to hear from people in the district so I know how to represent them in Lansing. This is the best way I know of to get input from my constituents. It's a good chance for us to meet and talk about important issues facing us."

"I hope everyone will plan to attend the meeting."

THE YEAR WAS 1925



A Florida Real Estate Boom was riding the crest of a National Boom (heading for a Bust). In Miami, a lady sold for \$450,000 a modest plot that cost \$25 in 1896. "Foresight," she said.

Red Grange in 1925 completed his Senior year of football at Illinois. The Wolverines of Michigan breathed a vast sigh of relief to see no more of the Galloping Ghost.

On March 31st, author Scott Fitzgerald closed a letter to his publisher, Maxwell Perkins, with the words, "Yours in a Tremble." He was concerned about his new novel, *The Great Gatsby*. Mia Farrow and Robert Redford were far in the future.

Rogers Hornsby hit 39 homeruns for the St. Louis Cardinals to lead the National League. Bob Meusel of the Yankees with 33 homers led his teammate Babe Ruth for the American League Homerun Crown. Flying Ebony won the Kentucky Derby.

In July, two famous lawyer-crusaders journeyed to Dayton, Tennessee to oppose each other in the "Monkey Trial." Clarence Darrow defended John Thomas Scopes for teaching Darwin's Theory of Evolution and thus violating Tennessee law. "Evolution is natural law," insisted Darrow. "It's Evilution," declared William Jennings Bryan for the prosecution. The world listened in fascination to a debate of giants.

The Big Movie of 1925 was Ben Hur with Ramon Novarro and Francis X. Bushman filling theatres from Portland, Maine to Portland, Oregon. And down the street in every town was Charlie Chaplin's comedy *The Gold Rush*. In the theatre, a hot ticket on Broadway was Al Jolson in *Big Boy*.

Gore Vidal, Gwen Verdon, Dick Van Dyke, Scott Carpenter, Angela Lansbury, and Peter Sellers thought 1925 was a good year to be born. So they were. The Ann Arbor Trust Company agreed. So we were. Now, 50 years later, Ann Arbor Trust Company is the largest Trust Company and the fastest growing bank in Washtenaw County.

ANN ARBOR TRUST COMPANY



ANN ARBOR, MICHIGAN 48107 • TELEPHONE 313/994-5555

Member F.D.I.C.

'THE BANK OF TRUST'



NOW OPEN FOR BUSINESS

B & G HYDRAULICS

7536 Jackson Ave. (rear of Eagles Club)
426-2405

WE CARRY:

- ★ Hydraulic hose and fittings
- ★ 1, 2 & 4 wire braid hose
- ★ 1/4 to 2 in. hose
- ★ Seamless steel tubing
- ★ 3/16, 1/4, 3/8" Bundy tubing
- ★ We do tube bending

Check us for hydraulic oil, air hose, fittings, filters, lubricators, forced air tools.

We also repair anything hydraulic cylinders, valves, pumps, etc.



TOUCHDOWN: Chelsea quarterback Randy Guenther (24) knocks off Tecumseh player number 66. The play came in the fourth quarter, one on the way to scoring Chelsea's fourth touch.

St. Louis School Notes

Sixty-seven boys are enrolled at St. Louis school this fall. Fr. Umberto Mellare says he hopes to make it 70 by January. While with the addition of the new boys' dorms and the conversion of former dormitory space to classrooms and recreational facilities, St. Louis school can accommodate up to 90 trainable and educable boys. Father Umberto stressed that they are not prepared to handle additional enrollment too fast. Now with five classrooms and renovation of recreational area, the Father feels that he wants to give everyone a chance to adjust to the new dorm, the additional classroom,

recreational space and two new staff members.

The Father reported on a number of new programs instituted at the school this year and on the renovation of the rec rooms.

What was once dormitory space for boys at St. Louis school has become two recreational rooms, "one for the little boys, the other for the big boys." Carpets and rugs cover tile floors, donations of arm chairs, sofas, tables, etc., all refinished and re-upholstered, give the boys a place to "relax." There the boys can watch TV, play board games, listen to records and read. "The community has been so kind to donate old pieces of furniture to us," the Father said. He added that all donations are appreciated. "One of the boy's fathers makes everything look almost new," he

A Work-Study program, the first at St. Louis has been instituted this fall, with the purpose to give the boys skills they can use at home, at work and in school. One of the teachers, Carol Lenox Kimball, is in charge of the program. Miss Kimball assigns boys to different chores around the school, such as folding and washing linens, mopping and waxing floors, land-

scaping, helping in the kitchen, etc. According to Fr. Mellare, many of these chores involve counting and simple mathematics; things that the boys can learn more easily through practical implementation rather than abstract study in the classroom.

Coupled with the Work-Study program is an awards system. "We have set up a store in one of the classrooms," Father said. "And we have filled it with items donated from Chelsea merchants; he especially noted Dancer's, Strieter's and Foster's for their donations of clothing." Fr. Mellare told that he was rather embarrassed about accepting requests to donate items for the awards program. "I had never begged before," he said. However, the Father was very well received and "the school store has contributed greatly to the boy's incentive to work."

The award system works on a points basis. Each item in the store has been assigned a number of points. The boys who acquire that number may have the item. Father Mellare said he likes to see the community involve itself with the school this way. "It is support we could not get elsewhere. The people in Chelsea are very warm hearted."

Subscribe today to The Standard!

Evangelist Coming to Immanuel Church

Immanuel Bible church is holding an Autumn New Life Campaign Sept. 21 through 28 at 7 p.m. nightly, with Evangelist Rudy Schuermann.

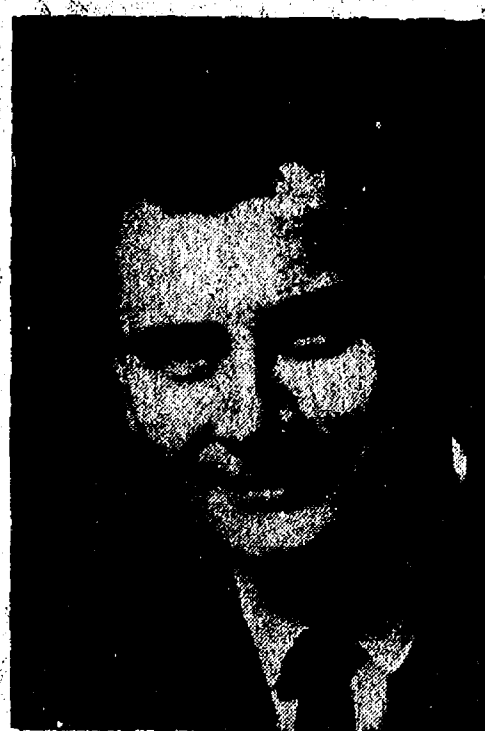
Evangelist Schuermann as a youngster was a member of the Hitler Youth Movement in Germany. His experiences in Europe during World War II contributed much to his thinking about eternal matters.

The evangelist received his theological training at the Detroit Bible College, and while there began his evangelistic ministry along with the renowned Dr. Jack Van Impe. They traveled together on week-ends and during the summer throughout the mid-west and Canada.

His practical experience also includes time spent as Youth and Music Director in several Detroit area churches, as well as filling the position of assistant pastor of three congregations. The Rev. Schuermann also pastored a church in northern Michigan.

During the past 27 years Evangelist Schuermann has been able to minister in more than 400 churches in traveling thousands of miles.

The Rev. Schuermann has also been the author of messages which have appeared in nationally published periodicals, which in turn have brought him to the attention of people around the world.



REV. RUDY SCHUERMANN

He has preached in more than half of the states in the U. S. as well as in Canada, South America and most recently Alaska. His ministry has been used in Bible Conferences and school assemblies as well.

Each evening there will be special music and singing by the congregation. The public is invited to attend. Immanuel Bible church is located at 145 E. Summit St. For more information please call 475-8936.

School Board Briefs

At a regular meeting of the Chelsea School Board Monday, Sept. 15, present were President: Jaselschardt, Vice President: Daniels, Hodgson, Schafer, Stirling, Tobin, Irwin, Supt. Cameron and Business Manager Mills. Guests present were David Nicewicz and Charles Kelly.

The meeting was called to order at 8 p.m. by Vice-President Daniels.

The board approved a contract for Jo Anne Sharpe as school psychologist for Region V Special Education District.

A request by Mr. Nicewicz for money for FFA members and two advisors to attend the National FFA convention in Kansas City on Nov. 11-14, was denied because of budget limitations for 1975-76.

The bid of David Rowe representing Farm Bureau insurance, in the amount of \$4,050.14 for buses and \$371.55 for driver education vehicles was accepted.

The board approved the purchase of a front curtain for the high school auditorium for \$1,050.

1974 Building and Site bills of \$416,662.90 were approved for payment.

The 1975-76 operating budget was discussed and will be approved at a later date.

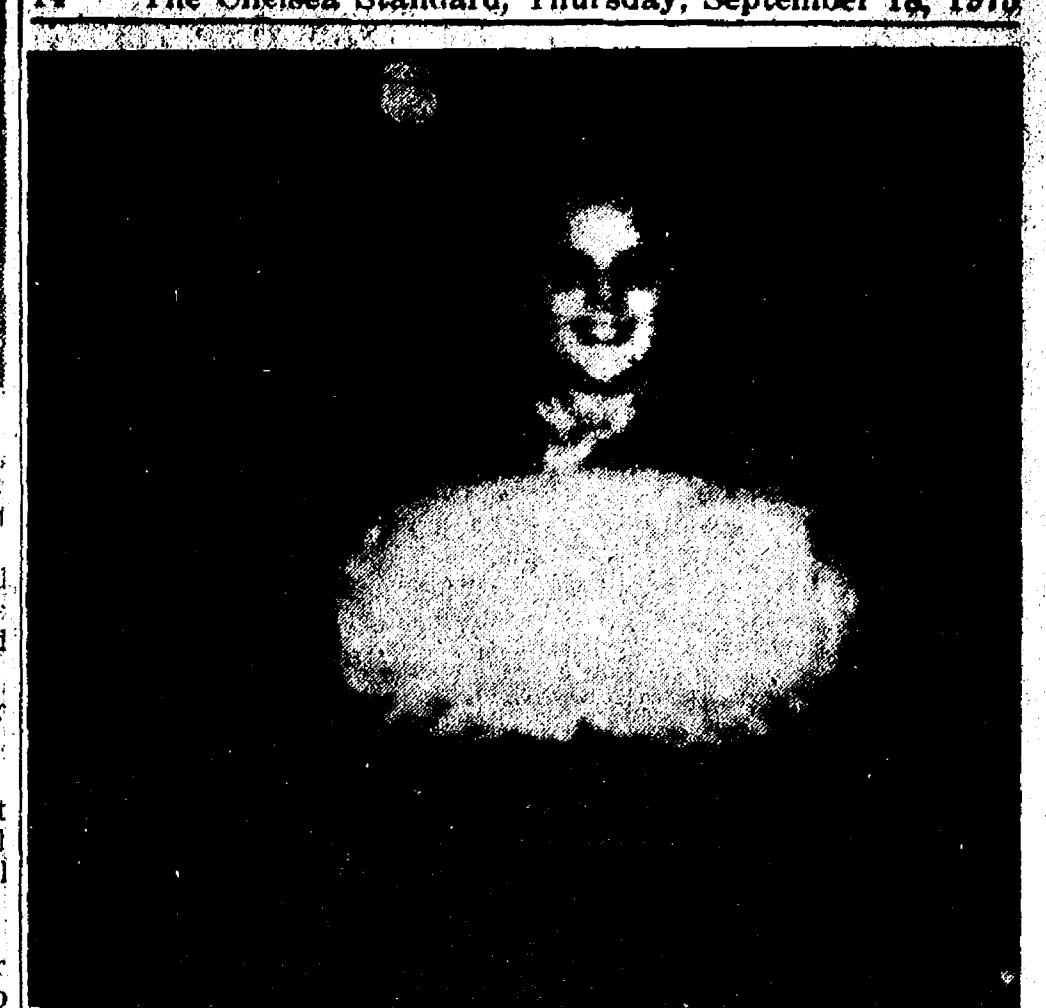
The board went into executive session at 10 a.m. Meeting called back to order at 10:25 p.m. Meeting adjourned at 10:25 p.m.

LIMA CENTER EXTENSION

Lima Center Extension Study Club met Sept. 10 at Lima Community Hall. The meeting was called to order at 11 a.m. by Nancy Spence.

Following the business meeting a pot-luck luncheon was held to honor Donna Bradbury for her service as secretary for 24 years. She was presented with a decorated cake, a hanging basket of Swedish ivy and a cash gift.

In the afternoon, Peter Flintoft of Chelsea spoke to the women on "Women and the Law." A question and answer period followed.



PUFFBALL MUSHROOM: A fifth grader at South school, Theresa Dyer holds an 11 1/2-pound mushroom she found on Maut Rd., in the Waterloo Recreation Area. According to her mother, Mrs. Chalmers Dyer, the family are great mushroom hunters. "It's a sport for us," she said. However, in all their years of hunting, this is the largest mushroom of its kind the family has seen. It was found accidentally by Theresa when she and her father were driving along Maut Rd. Mrs. Dyer says the puffball makes for great eating. Also reported was an 11 1/2-pound puffball found in the swampy area behind the Half Moon Lake home of the Dale Richardsons. Mrs. Richardson said her daughter discovered it and was letting it grow, hoping to beat the record; however, a kindly neighbor knowing how much the Richardsons enjoy puffballs, picked it and gave it to the family.

Telephone Reassurance Program Still Operating

Telephone reassurance. A plan whereby the elderly, the disabled, the alone can place a request to be contacted, daily, weekly or monthly by a member of the community who can arrange to fulfill their needs and requests, to soothe their anxieties.

Chelsea's Social Services director, Linda Ormsby, reminds area residents that the service is still in effect. "We have a list of names," she said "but we can't be sure that we have everyone who may need or want the service."

Mrs. Ormsby asks that those persons who want to participate in the telephone reassurance program, even those who know someone who might like to become involved, should call Mrs. Eva Carpenter days at 475-2881. Evenings call Mrs. Linda Ormsby at 475-1012.

Mrs. Ormsby said that either she or Mrs. Carpenter will be able to

The Vatican has its own radio transmitters which beam Vatican news around the world every day in 30 languages.

TODAY'S BEST BUY

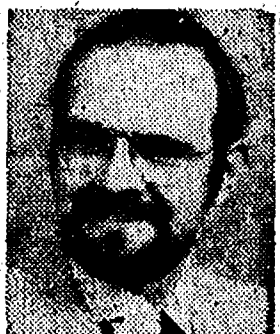
A Season Ticket to the 1975-76

KIWANIS TRAVELOGUES

6 Great Shows
Only \$8.00!

You and Your HOME

... one of the reasons we're in business ... with automatic snowmobile, outboard motorboat and swimming pool liability protection at no extra cost in every Homeowners policy. Check the facts



DAVE ROWE

107 1/2 S. Main
Chelsea, Mich.
Ph. 475-8065

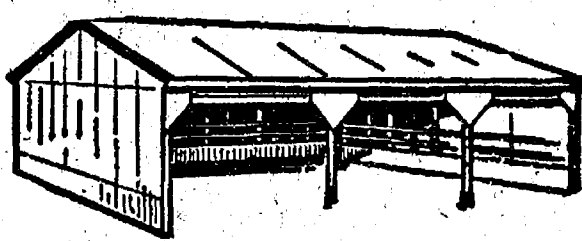
FARM BUREAU
INSURANCE
GROUP, INC.

Home Bureau Mutual - Farm Bureau Life
Continuously Service Insurance - Continuously Service Acceptance

POLE BUILDINGS

(GO UP EASILY... ECONOMICALLY)

ANY TYPE - ANY STYLE - ANY SIZE
Residential - Agriculture - Commercial
PROMPT CONSTRUCTION DATES
Low prices and high quality workmanship.



OWEN CUSTOM BUILDERS
LICENSED & INSURED - MANY SATISFIED CUSTOMERS
JACKSON (517) 769-2669

DUNBAR'S DEXTER LOCKER

PAUL DUNBAR, OWNER

8083 MAIN ST., DEXTER PHONE 426-8466

BUY NOW

BEEF SIDES . . . Standard Cut 89¢ lb.

10 round steaks	6 sirloin tips	5 chuck roasts
6 porterhouse steaks	3 swiss steaks	3 arm round roasts
8 sirloin steaks	6 chuck steaks	2 English roasts
12 T-bone steaks	12 rib steaks	6/2 lb. short ribs
2 rib roasts	4 boneless rump roasts	6/1 lb. boneless beef stew

80 lbs. hamburger

SPECIAL

Old-Fashioned SMOKED HAM . . . lb. \$1.29

BEEF HEARTS (10-lb. lots) . . . lb. 29¢

(Also available in single lots at 39¢ lb.)

We Also Sell in Small Quantities

Discount to Civic Groups - We Accept Federal Food Stamps

CUSTOM SLAUGHTERING & PROCESSING

District Court Proceedings

Week of Sept. 8-15

Theo McCrocker pled guilty to the possession of open intoxicants in a motor vehicle. Fines and costs, \$35.

Jon Marzee was found guilty of speeding. Fines and costs, \$26.

Jack E. Cyril pled guilty to charges of careless driving. Fines and costs, \$35.

Mary Jacobson pled guilty to charges of speeding. Fines and costs, \$23.

Harry Largin pled guilty to speeding. Fines and costs, \$35.

Donald C. Smith pled guilty to charges of being drunk and disorderly. Fines and costs, \$50.

Opal Kaluz pled guilty to charges of speeding. Fines and costs, \$21.

Mickey N. Eichstadt pled guilty to charges of not having a valid operator's license on his person. Fines and costs, \$35.

Russell R. Greenwood was found guilty of the possession of intoxicants on the highway. Fines and costs, \$35.

Carl D. Ghalson was found guilty of possessing open intoxicants in a motor vehicle. Fines and costs \$50.

Donald Basquin pled guilty to charges of driving while his license was suspended. Fines and costs, \$100 plus 10 days in city jail or 45 days.

David Wilson pled guilty to charges of speeding. Fines and costs, \$21.

Arthur Patton pled guilty to charges of speeding. Fines and costs, \$21.

Robert Miller was sentenced to 15 days in jail on charges of concealing stolen property under \$100. Charles Billmeyer pled guilty to renting a boat with insufficient flotation devices. Fines and costs, \$21.

Seth Crocker pled guilty to charges of disregarding a traffic signal. Fines and costs, \$21.

Albert Pearson appeared on a bench warrant and pled guilty to charges of careless driving. Fines and costs, \$30.

Albert Pearson pled guilty to violating a license restriction. Fines and costs, \$35.

Jonathon H. Rohde was found guilty of being drunk and disorderly. Fines and costs, \$50.

Dennis Waterpool was found guilty of careless driving. Fines and costs, \$34.

Jeffrey Deaken was found guilty of improper parking. Fines and costs, \$10.

Glenn Stoll pled guilty to driving with improper license plates. Fines and costs, \$34.

Leonard Scheler pled guilty to charges of open alcohol in a motor vehicle. Fines and costs, \$35.

William Kalen was sentenced to pay fines of \$75 and to two years probation on charges of driving with an expired operator's license.

William Kalen was sentenced to pay fines of \$200, to attend the Alcohol Safety Action Program and to two years probation on charges of driving while under the influence of liquor.

Marcelene Walker pled guilty to charges of careless driving. Fines and costs, \$35.

Billy Fultz was sentenced to pay fines and costs of \$50 on charges of being a disorderly person.

Gordon Sharp pled guilty to driving while his license was suspended. Fines and costs, \$75.

Tommie Dawson was found guilty of speeding. Fines and costs, \$21.

Mark D. Israel was sentenced to pay fines and costs of \$250 on charges of impaired driving.

Charles D. Easton was found guilty of speeding. Fines and costs, \$21.

Dean Johara was found guilty of the possession of alcohol in a restricted area. Fines and costs, \$25.

William Sullivan pled guilty to charges of being drunk and disorderly. Fines and costs, \$25.

James Davis was found guilty to speeding. Fines and costs, \$21.

The Lemonade Springs in New Mexico carry about 900 pounds of sulfuric acid per million pounds of water, more than 10 times the acid concentrate in coal mine discharges.

PIERSON & SONS

LICENSED GENERAL CONTRACTORS

475-8750

New Construction,
Remodeling, Siding.



RUBBER BACK CARPETS

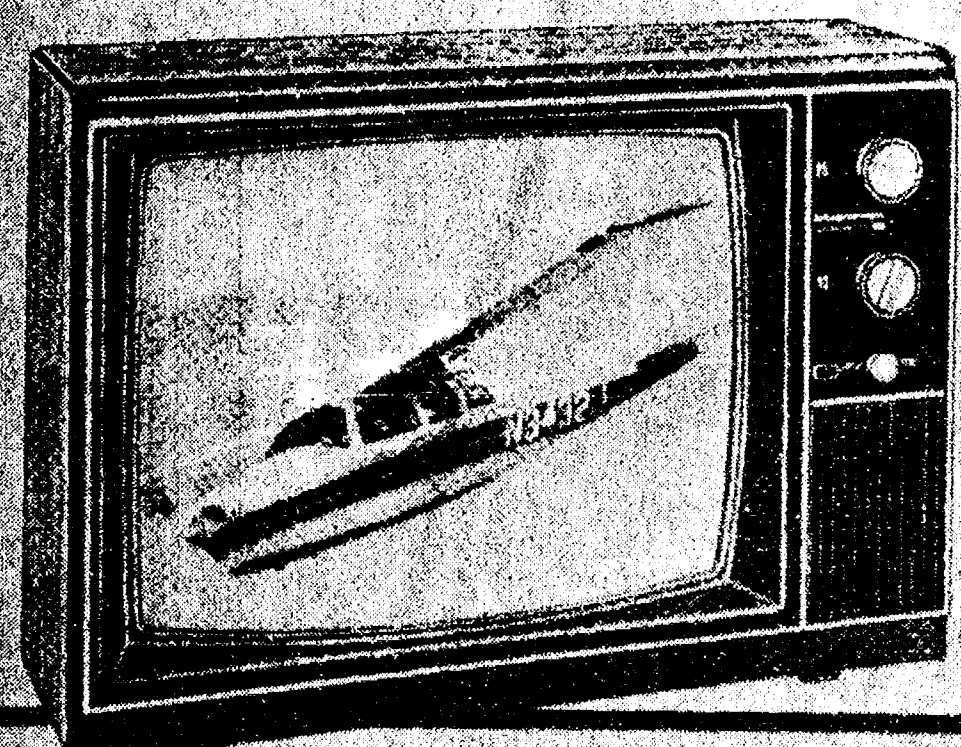
TWEEDS . . . \$3.99 yd.
PATTERN . . . \$4.99 yd.
SHAG . . . \$5.99 yd.

In Stock. Do it yourself or have it installed.

Merkel
HOME FURNISHINGS

MAGNAVOX VALUE days

Big values in . . .
Color TV
B/W TV
Stereo Consoles
and Components



VALUE PRICED

19" Solid-State Color Portable

Just look at all the features of model 4346 . . . and you'll know why this is such a great Magnavox value! 100% solid-state chassis for highly dependable and economical performance. (Less heat, electricity than tube sets). . . automatic fine tuning for accurately tuned pictures on UHF and VHF channels. . . the Precision In-Line Tube System for optimum performance and minimum service. . . extra tested for extra reliability. . . and just look at its low, low price!

\$439⁹⁵

Magnavox

Quality in every detail

HEYDLAUFF'S

113 N. Main St., Chelsea

Phone 475-1221



Polly's

MASTER
MARKETS

1101 M52
CHELSEA

201 PARK
VANDERCOOK LK.

1621
Spring Arbor Rd.
JACKSON

960
N. WEST AVE.
JACKSON

115
W. PROSPECT ST.
JACKSON

1809
E. MICH. AVE.
JACKSON

get to know us...

WE CAN HELP YOU SAVE ON YOUR FOOD BILL!

**OPEN .
DAILY:**

8

A.M. TO

10

P.M.

**OPEN
SUNDAY:**

9

A.M. TO

6

P.M.



QUALITY PRODUCE



QUALITY MEAT



COLD BEER & WINE



LOTTERY TICKETS



SIDES OF BEEF



FRUIT BASKETS



DRY CLEANING



PHOTO PROCESSING



VARIETY AT LOW PRICES



Polly's MASTER MARKETS

1101 M52 CMELSEA	201 PARK VANDERCOOK LK.	1621 Spring Arbor Rd. JACKSON
960 N. WEST AVE. JACKSON	115 W. PROSPECT ST. JACKSON	1809 E. MICH. AVE. JACKSON

no matter how you peel it..

PRODUCE

U.S. No. 1 Michigan
McINTOSH APPLES

3-Lb. Bag **59¢**

US No. 1 ToKay
GRAPES

Lb. **37¢**

Vine-Ripened Michigan
TOMATOES

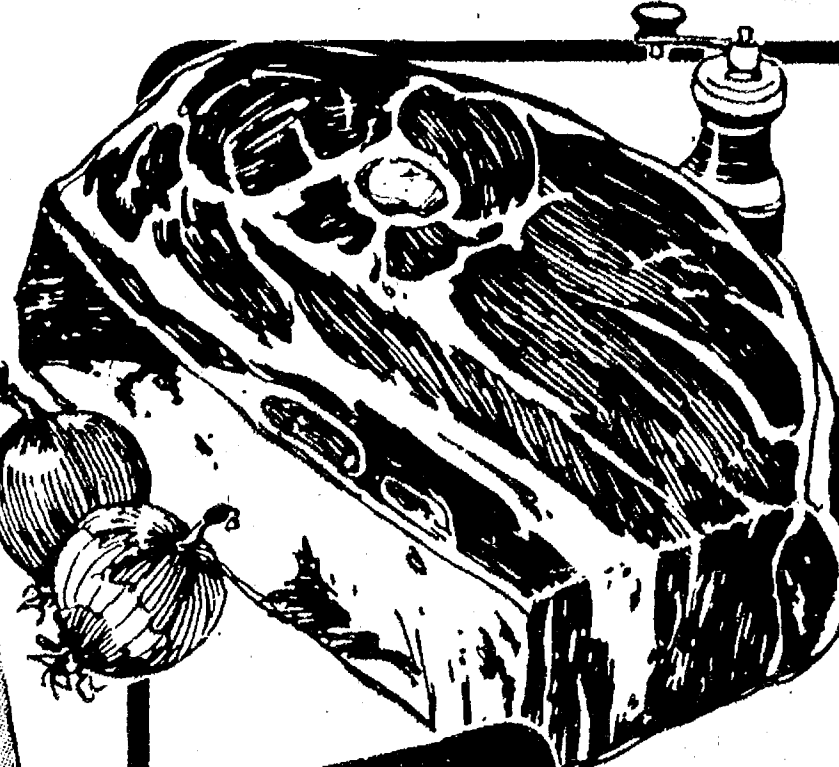
Lb. **39¢**

Michigan Purple
PRUNE PLUMS

Lb. **22¢**

Sunmaid **RAISINS** 6-oz. **59¢**

Sunmaid **RAISINS** 2-Lb. Bag **\$1.59**



Polly's Pride Boneless

CHUCK ROAST ... Lb. **99¢**

Polly's Pride Quality

CHUCK STEAK ... Lb. **89¢**

Polly's Pride Quality
RIB STEAK

Lb. **\$1.69**

Polly's Pride Quality Beef

GROUND CHUCK	Lb.	95¢
Polly's Pride Boneless		
BEEF BRISKET	Lb.	\$1.39
Polly's Pride Arm Cut		
SWISS STEAK	Lb.	\$1.09
Polly's Pride Quality Chuck		
ENGLISH CUT ROAST	Lb.	\$1.09

Polly's Pride Boneless
BEEF STEW

Lb. **\$1.39**

Polly's Pride Quality
CUBE STEAK

Lb. **\$1.59**

Polly's Pride Quality
HAMBURG

10-Lb. Bag **79¢** Lb.

Lean & Meaty
SHORT RIBS

Lb. **79¢**

Eckrich Beef		
FUN FRANKS	Lb.	\$1.19
Eckrich		
SMORGAS PAC	Lb.	\$1.49
Swift Premium		
DUCKLINGS	Lb.	89¢
Breaded		
FISH PORTIONS	Lb.	69¢

Quarter Pork Loin		
PORK CHOPS	Mixed Ends & Centers Lb.	\$1.69
Direct from Boston		
OCEAN PERCH	Lb.	99¢
I.Q.F. Bay		
LAKE SMELT	Lb. Bag	69¢
Swift Premium		
BEEF TONGUE	Lb.	89¢

Swift Premium Sliced		
BEEF LIVER	Lb.	69¢
Swift Premium		
BEEF HEART	Lb.	49¢
Fresh Turkey		
DRUMSTICKS	Lb.	39¢
Fresh		
TURKEY WINGS	Lb.	49¢

LAMB

WHOLE
LEG of LAMB

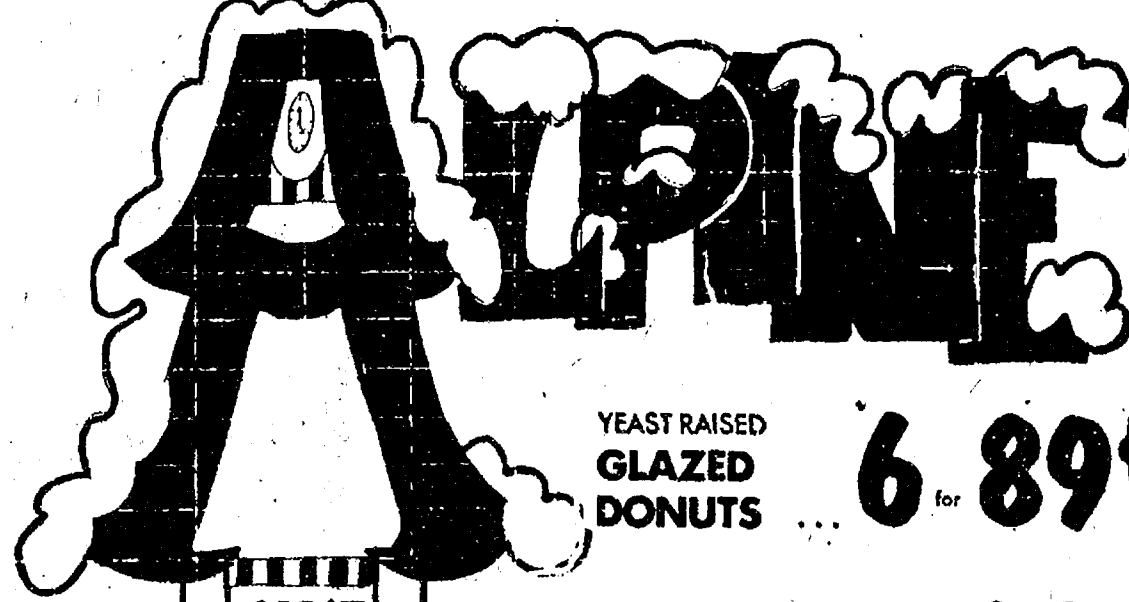
Lb. **\$1.49**

Loin Cut		
LAMB CHOPS	Lb.	\$1.99
Sirloin		
LAMB CHOPS	Lb.	\$1.69
Rib Cut		
LAMB CHOPS	Lb.	\$1.89
Rump Half		
LEG of LAMB	Lb.	\$1.49
Shank Half		
LEG of LAMB	Lb.	\$1.59
Fresh		
LAMB STEAK	Lb.	\$1.69

Blade Shoulder		
LAMB CHOPS	Lb.	\$1.09
Arm Shoulder		
LAMB CHOPS	Lb.	\$1.29
Fresh		
LAMB SHANK	Lb.	99¢
Bone In		
LAMB STEW	Lb.	89¢
Boneless		
LAMB for KABOBS	Lb.	\$1.69
Fresh		
LAMB PATTIES	Lb.	89¢

Eckrich
POLISH SAUSAGE Lb. **\$1.39**

Eckrich
RING BOLOGNA Lb. **\$1.29**



YEAST RAISED
GLAZED DONUTS 6 for **89¢**

FRESH CAKE
GERMAN CHOCOLATE **98¢**

MADE TO ORDER
BIRTHDAY CAKES 8-INCH 2-LAYER **\$4.25**

Bakery Bargains

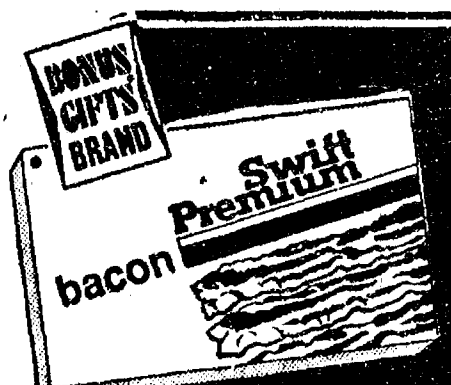
FREE!! DOZEN DONUTS
WHEN YOU PURCHASE
BIRTHDAY CAKE



Save 40¢ W/In-Store Coupon
SWIFT PREMIUM

FRANKS

Lb. Pkg. **99¢**



Save 40¢ W/In-Store Coupon
SWIFT PREMIUM SLICED

BACON

Lb. Pkg. **\$1.79**

DELI

Polly's Homestyle
SANDWICH SPREAD Lb. **79¢**

Hoffman Super
SHARP CHEESE 1/2-Lb. **79¢**

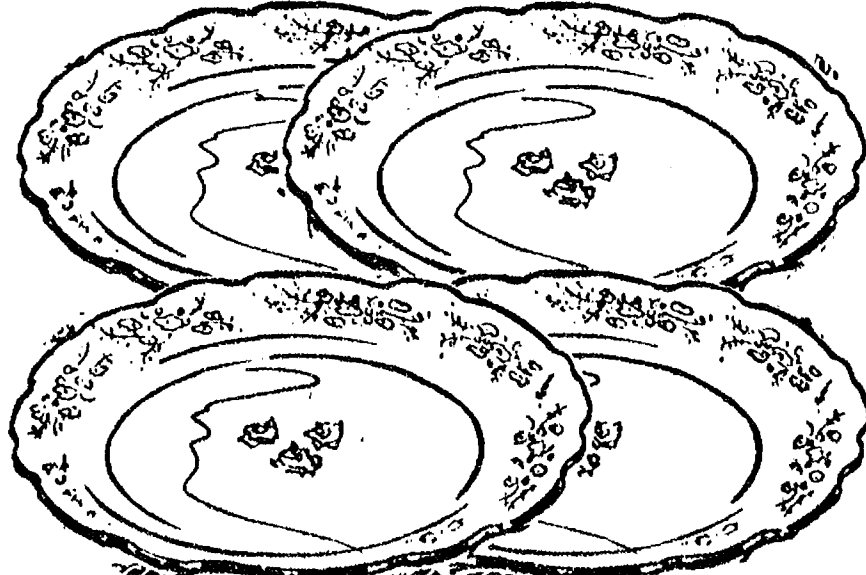
Wisconsin Brick or
MUNSTER CHEESE 1/2-Lb. **79¢**

Wisconsin
COLBY LONGHORN Lb. **\$1.39**

SAVE-A-LOT PHARMACY

Good Only at Polly's on W. Ave. & Spring Arbor

Save 45¢ With In-Store Coupon		
DESENEX FOOT POWDER	6-oz.	\$1.39
Save 38¢ With In-Store Coupon		
PREPARATION H SUPPOSITORIES	12-ct.	\$1.49
Save 50¢ With In-Store Coupon		
B-D FEVER THERMOMETERS		\$1.19



4 SALAD PLATES

THIS WEEK'S FEATURED ITEM

\$2.00 off
WITH COUPON



Save UP TO \$10.66

with these BONUS COUPONS
and Polly's IN-STORE COUPONS

VALUABLE COUPON
SAVE 40¢
Polly's HOMOGENIZED MILK gal. \$1.09
LIMIT 2 PER COUPON PER FAMILY
GOOD THRU 9/20/75

VALUABLE COUPON
Save 20¢
Polly's WHITE BREAD 3 20-oz. 89¢
LIMIT 6 PER COUPON PER FAMILY
GOOD THRU 9/20/75

VALUABLE COUPON
King Size TIDE DETERGENT 84-oz. \$1.69
LIMIT 1 PER COUPON PER FAMILY
GOOD THRU 9/20/75

VALUABLE COUPON
SAVE 2¢
Johann Haviland SALAD PLATES 4-ct. \$7.99
LIMIT 1 PER COUPON PER FAMILY
GOOD THRU 9/20/75

Polly's save you more on your... **FOOD BILL!**

SAVE UP TO 80¢ WITH BONUS COUPON

**POLLY'S
HOMOGENIZED
MILK.....Gal.**
\$1.09
**Here's
How...**

SAVE UP TO 40¢ WITH BONUS COUPON

**POLLY'S
WHITE
BREAD.....**
**3 20-OZ.
LOAVES 89¢**

SAVE 45¢ WITH BONUS COUPON

**KING SIZE
TIDE
DETERGENT... 84-OZ.**
\$1.69

(1.) EVERYDAY LOW PRICES

Save everyday with our low discount prices good seven days a week. Even with the inflationary trend in food prices Polly's has kept prices as low as possible. Check & Compare... our prices are as low or lower than any other food store in Jackson.

(2.) BONUS COUPONS

At Polly's you get these deep-cut bonus coupons, in addition to our low regular day prices and in-store coupons. These bonus coupons are included weekly in our ads on Monday & Thursday. Be sure & clip these extra-money saving coupons, they can mean big savings to you on necessary staple items.

(3.) QUALITY MEATS

Serving the finest meat available at Polly's low prices is a bonus to any tight budget. Polly's Pride Quality Meat is guaranteed 100%. Our finely trimmed beef allows for less fat and more meat for your money. Quality always means savings, that's why we are proud to offer you the finest beef available... Polly's Pride Beef.

(4.) IN-STORE COUPONS

Every week Polly's offers you 15 to 18 in-store coupons. Many of these coupons are offered periodically by manufacturers and suppliers and we feel that it is our duty to pass these savings on to our customers. You see, they can mean big savings to you and we like to offer as many as possible.

(5.) DEEP-CUT SPECIALS

Deep-Cut specials can save you even more on your total food bill. These specials are temporary price reductions featured weekly in our ads on items which result from our special purchases and manufacturers allowances. These specials are good seven days a week so you can take advantage of them no matter what day you shop. Another reason to shop Polly's.

(6.) CONVENIENCE & VARIETY

Polly's are conveniently located so that no matter where you live, there's one near you. Saving you time and gas money, you already save just when you drive or walk to Polly's. We also offer you the largest variety of items on our shelves, so that once you are at Polly's you don't have to shop anywhere else.

Save 30¢ With In-Store Coupon

**WISK
DETERGENT..... 64-oz. \$1.99**

Save 30¢ With In-Store Coupon

**MAGIC
SIZING..... 20-oz. can 39¢**

Chocolate Chip

COOKIES..... 14 1/2-oz. 77¢

Days Ease

**PLUMBER
SAVER..... 32-oz. 69¢**

Bits O Sea

**GRATED
TUNA..... 3 6-oz. \$1**

Purina

**MEOW
MIX..... 7-lb. \$2.29**

Pringles

**POTATO
CHIPS..... 4 1/2-oz. 39¢**

Regular or Lemon

**JOHNSONS
PLEDGE..... 14-oz. \$1.19**

With In-Store Coupon... easy-On

**SPRAY
STARCH..... 22-oz. 59¢**

Queen of Scot

**KOSHER
DILL SPEARS..... 24-oz. 49¢**

Queen of Scot

**POLISH
DILL ICICLES..... 24-oz. 49¢**

Queen of Scot Fresh Sweet

**CUCUMBER
SLICES..... 24-oz. 49¢**
**Good Looks,
Good Health,
Great Values**

**Gillette
SUPER STAINLESS**

SAVE 46¢ W/IN-STORE COUPON

**GILLETTE
BLADES..... 10-ct. 99¢**
BAND-AIDS..... Wide or Large 79¢
**TOOTH-
PASTE..... 7-Oz. 89¢**
**KOTEX
TAMPONS..... 40-ct. \$1.39**
**RIGHT
GUARD..... 8-Oz. \$1.19**
**FINAL
NET..... 8-Oz. \$1.59**
**CONTACT
CAPSULES..... 10-ct. \$1.09**
Earth Born
**pH Balanced
SHAMPOO..... 8 oz. - \$1.79 Value \$1.19**
CREME RINSE & CONDITIONER
**APRICOT
AVOCADO
GREEN APPLE
STRAWBERRY..... 8 oz. 99¢**

FROZEN

Queen of Scot
BRUSSEL SPROUTS..... 3 10-oz. pkgs. \$1.00

Queen of Scot
CAULIFLOWER..... 3 10-oz. pkgs. \$1.00

Scot Lad
ORANGE JUICE..... 2 16-oz. \$1.00

4 Varieties of Jeno's
PIZZA ROLLS..... 6-oz. 59¢

Ore-Ida
TATER TOTS..... 2-Lb. 59¢

DAIRY

Save 19¢ With In-Store Coupon
**DAIRY FRESH
MARGARINE..... 1-lb. Qtz. 2 79¢**

Scot Farms Baking Powder or
**BUTTERMILK
BISCUITS..... 8 8-oz. \$1**

Sealtest
**LIGHT 'N LIVELY
YOGURT..... 4 8-oz. \$1**

ALL ABOUT FOOD



F.A. KENNEDY

Do movies influence eating habits? Before you say no, read on.

In foreign films you don't see many cowboys. But you do see lots of shepherders. And in several foreign countries, lamb and mutton are the most popular meats.

Here in America we have lots of shepherders. We have to have. Right now there are some twenty-two million sheep and fifteen million lambs somewhere out there in Marlboro country.

But shepherders somehow aren't colorful enough for Hollywood. They don't wear six-shooters. They don't ride horses. And they don't have a bowlegged strut. So you almost never see a shepherd in a movie, and if you do his sheep are probably blocking a road or something.

And — you guessed it — we Americans eat less lamb and mutton than almost any other people on earth. Actually about four pounds per person per year.

Yet, to many a gourmet, spring hasn't really arrived until that first dish of spring lamb, mint sauce, and peas. During the rest of the year, of course, that some gourmet will enjoy mutton served in many different and delicious ways.

One such gourmet was the great Shakespearean actor Edmund Kean, who always tried to suit his diet to his role. If he was to play the part of a hero, he would dine on beef. If he was to be a villain, he ate pork. And if he was to be romantic, he called for fresh lamb. For lamb, he said, belongs to love, just as it belongs to spring.

Well, I certainly don't claim to be an expert on actors, but I can promise you that all of us at Polly's will always give you a good performance.

To You... from BORDEN'S


Thank You

FOR SHOPPING AT...



**WHERE WE ARE
HAPPY TO.....**

save YOU MONEY!